

# Recombinant Human G6PC3 protein ab164911

画像数 1

### 製品の詳細

|             |  |
|-------------|--|
| 製品名         | Recombinant Human G6PC3 protein  |
| 発現系         | Wheat germ   |
| アクセッション番号   | <b><u>Q9BUM1</u></b>   |
| タンパク質長      | Full length protein  |
| Animal free | No   |
| 由来          | Recombinant  |
| 生物種         | Human  |
| 配列          | <p>MESTLGAGIVIAEALQNQLAWLENVLWITFLGDPKILFLFY<br/> FPAAYYAS<br/> RRVGIAVLWISLITEWLNLIFFKWFLFGDRPFWWHESGYYSQ<br/> APAQVHQF<br/> PSSCETGPGSPSGHCMITGAALWPIMTALSSQVATRARSRWV<br/> RVMPSLAY<br/> CTFLAVGLSRIFILAHFPHQVLAGLITGAVLGWLMTPRVPM<br/> ERELSFYG<br/> LTALALMLGTSLIYWTLFTLGLDLSWSISLAFKWCERPEWIH<br/> VDSRPFAS<br/> LSRDSGAALGLGIALHSPCYAQVRRACLGNQKIACLVLAMG<br/> LLGPLDWL<br/> GHPPQISLFYIFNFLKYTLWPCLVLALVPWAVHMFSAQEAPP<br/> IHSS</p> |
| 領域          | 1 to 346   |
| タグ          | GST tag N-Terminus   |

### 特性

Our **Abpromise guarantee** covers the use of **ab164911** in the following tested applications.

The application notes include recommended starting dilutions; optimal dilutions/concentrations should be determined by the end user.

|          |              |
|----------|--------------|
| アプリケーション | Western blot |
|          | ELISA        |
| 製品の状態    | Liquid       |

備考

## 前処理および保存

### 保存方法および安定性

Shipped on dry ice. Upon delivery aliquot and store at -80°C. Avoid freeze / thaw cycles.

pH: 8.00

Constituents: 0.31% Glutathione, 0.79% Tris HCl

## 関連情報

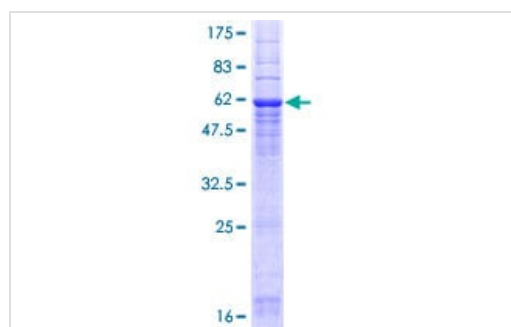
### 関連性

G6PC3 is the catalytic subunit of glucose-6-phosphatase (G6Pase). G6Pase is located in the endoplasmic reticulum (ER) and catalyzes the hydrolysis of glucose-6-phosphate to glucose and phosphate in the last step of the gluconeogenic and glycogenolytic pathways. Mutations in this gene result in autosomal recessive severe congenital neutropenia. Multiple transcript variants have been found for this gene, only one of which is expected to express a protein.

### 細胞内局在

Endoplasmic reticulum membrane; Multi-pass membrane protein.

## 画像



SDS-PAGE - Recombinant Human G6PC3 protein  
(ab164911)

ab164911 on a 12.5% SDS-PAGE stained with Coomassie Blue.

**Please note:** All products are "FOR RESEARCH USE ONLY. NOT FOR USE IN DIAGNOSTIC PROCEDURES"

## Our Abpromise to you: Quality guaranteed and expert technical support

- Replacement or refund for products not performing as stated on the datasheet
- Valid for 12 months from date of delivery
- Response to your inquiry within 24 hours
- We provide support in Chinese, English, French, German, Japanese and Spanish
- Extensive multi-media technical resources to help you
- We investigate all quality concerns to ensure our products perform to the highest standards

If the product does not perform as described on this datasheet, we will offer a refund or replacement. For full details of the Abpromise, please visit <https://www.abcam.co.jp/abpromise> or contact our technical team.

## Terms and conditions

---

- Guarantee only valid for products bought direct from Abcam or one of our authorized distributors