

Recombinant human FGF2 protein ab61845

画像数 3

製品の詳細

製品名	Recombinant human FGF2 protein
生理活性	Specific activity of 3MIU/mg
精製度	> 95 % SDS-PAGE. Purity greater than 95% as determined by: Analysis by RP-HPLC. Reducing and non-reducing SDS-PAGE.
発現系	Escherichia coli
タンパク質長	Protein fragment
Animal free	No
由来	Recombinant
生物種	Human
配列	MPA LPEDGGSGAF PPGHFKDPKR LYCKNGGFFL RIHPDGRVDG VREKSDPHIK LQLQAEERGV VSIKGVCANR YLAMKEDGRL LASKCVTDEC FFFERLESNN YNTYRSRKYT SWYVALKRTG QYKLGSKTGP GQKAILFLPM SAKS

特性

Our **Abpromise guarantee** covers the use of **ab61845** in the following tested applications.

The application notes include recommended starting dilutions; optimal dilutions/concentrations should be determined by the end user.

アプリケーション	SDS-PAGE Functional Studies
製品の状態	Lyophilized
備考	Add 0.1% HSA or BSA for long term storage at -20°C.

前処理および保存

保存方法および安定性	Shipped at 4°C. Upon delivery aliquot and store at -20°C. Avoid freeze / thaw cycles. Constituent: 0.164% Sodium phosphate This product is an active protein and may elicit a biological response in vivo, handle with caution.
------------	---

再構成

It is recommended to reconstitute the lyophilized product with sterile water to a concentration of 0.1 mg/ml, which can be further diluted into other aqueous solutions.

関連情報

機能

Plays an important role in the regulation of cell survival, cell division, angiogenesis, cell differentiation and cell migration. Functions as potent mitogen in vitro. Can induce angiogenesis (PubMed:23469107).

組織特異性

Expressed in granulosa and cumulus cells. Expressed in hepatocellular carcinoma cells, but not in non-cancerous liver tissue.

配列類似性

Belongs to the heparin-binding growth factors family.

翻訳後修飾

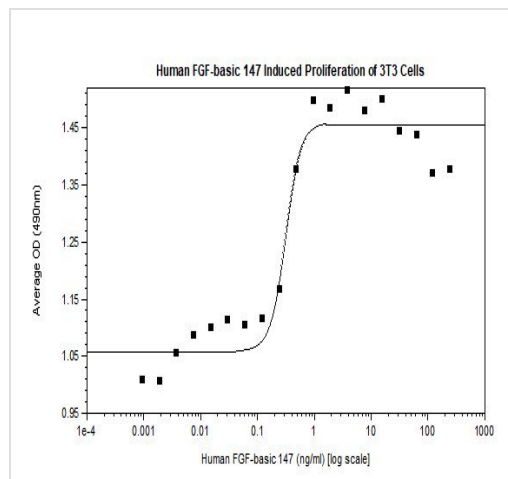
Phosphorylation at Tyr-215 regulates FGF2 unconventional secretion.

Several N-termini starting at positions 94, 125, 126, 132, 143 and 162 have been identified by direct sequencing.

細胞内局在

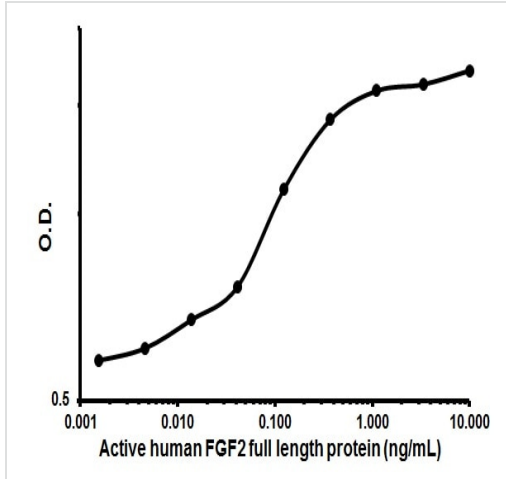
Secreted. Nucleus. Exported from cells by an endoplasmic reticulum (ER)/Golgi-independent mechanism. Unconventional secretion of FGF2 occurs by direct translocation across the plasma membrane. Binding of exogenous FGF2 to FGFR facilitates endocytosis followed by translocation of FGF2 across endosomal membrane into the cytosol. Nuclear import from the cytosol requires the classical nuclear import machinery, involving proteins KPNA1 and KPNB1, as well as CEP57.

画像



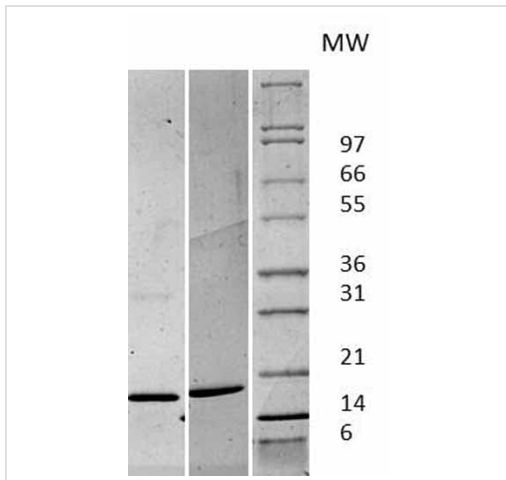
Functional analysis of ab61845

Functional Studies - Recombinant human FGF2 protein (ab61845)



Dose-dependent proliferation of mouse BALB/c 3T3 cells with ab61845. Assays were carried out in triplicate.

Cellular activation - Recombinant human FGF2 protein (ab61845)



ab61845 used in Western Blot. Figure: 1 ug in each lane (-) non-reducing conditions and (+) reducing conditions in a 4-20% Tris-Glycine gel stained with Coomassie Blue. Human FGF basic has a predicted MW of 16.5 kDa.

Western blot - Recombinant human FGF2 protein (ab61845)

Please note: All products are "FOR RESEARCH USE ONLY. NOT FOR USE IN DIAGNOSTIC PROCEDURES"

Our Abpromise to you: Quality guaranteed and expert technical support

- Replacement or refund for products not performing as stated on the datasheet
- Valid for 12 months from date of delivery
- Response to your inquiry within 24 hours

- We provide support in Chinese, English, French, German, Japanese and Spanish
- Extensive multi-media technical resources to help you
- We investigate all quality concerns to ensure our products perform to the highest standards

If the product does not perform as described on this datasheet, we will offer a refund or replacement. For full details of the Abpromise, please visit <https://www.abcam.co.jp/abpromise> or contact our technical team.

Terms and conditions

- Guarantee only valid for products bought direct from Abcam or one of our authorized distributors