

Recombinant Human ETHE1 protein ab119454

画像数 1

製品の詳細

製品名 Recombinant Human ETHE1 protein
精製度 > 90 % SDS-PAGE.

発現系 Escherichia coli

アクセッション番号 **O95571**

タンパク質長 Full length protein

Animal free No

由来 Recombinant

生物種 Human

配列

```

MGSSHHHHHH SSGLVPRGSH MGSHTMLSQRG
GSGAPILLRQ MFEPVSCTFT YLLGDRESRE
AVLIDPVLET APRDAQLIKE LGLRLLYAVN
THCHADHITG SGLLRSL LPG CQSVISRLSG
AQADLHIEDG DSIRFGRFAL ETRASPGHTP
GCVTFVLNDH SMAFTGDALL IRGCGRTDFQ
QGCAKTLYHS VHEKIFTLPD DCLIYPAHDY
HGFTVSTVEE ERTLNPRLTL SCEEFVKIMG
NLNLPKPQQI DFAVPANMRC GVQTPTA

```

予測される分子量 29 kDa including tags

領域 13 to 254

タグ His tag N-Terminus

特性

Our **Abpromise guarantee** covers the use of **ab119454** in the following tested applications.

The application notes include recommended starting dilutions; optimal dilutions/concentrations should be determined by the end user.

アプリケーション Mass Spectrometry
SDS-PAGE

質量分析 MALDI-TOF

製品の状態 Liquid

前処理および保存

保存方法および安定性

Shipped at 4°C. Store at +4°C short term (1-2 weeks). Upon delivery aliquot. Store at -20°C or -80°C. Avoid freeze / thaw cycle.

pH: 8.00

Constituents: 0.32% Tris HCl, 10% Glycerol (glycerin, glycerine), 0.58% Sodium chloride

関連情報

機能

Probably plays an important role in metabolic homeostasis in mitochondria. May function as a nuclear-cytoplasmic shuttling protein that binds transcription factor RELA/NFκB3 in the nucleus and exports it to the cytoplasm. Suppresses p53-induced apoptosis by preventing nuclear localization of RELA.

組織特異性

Ubiquitously expressed.

関連疾患

Defects in ETHE1 are a cause of ethylmalonic encephalopathy (EE) [MIM:602473]. EE is an autosomal recessive disorder characterized by neurodevelopmental delay and regression, recurrent petechiae, acrocyanosis, diarrhea, leading to death in the first decade of life. It is also associated with persistent lactic acidemia and ethylmalonic and methylsuccinic aciduria.

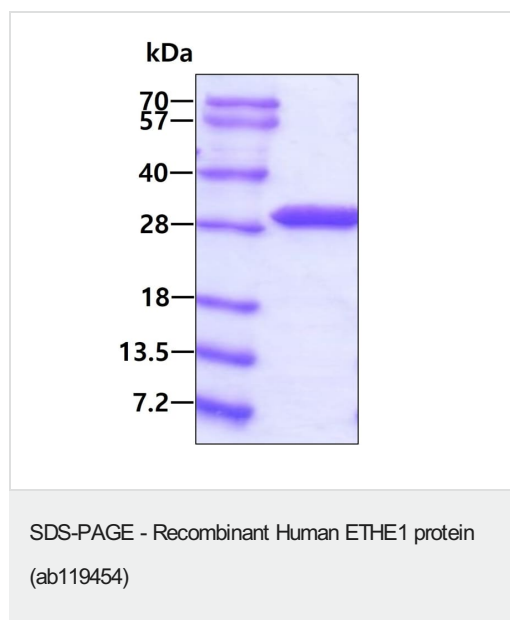
配列類似性

Belongs to the metallo-beta-lactamase superfamily. Glyoxalase II family.

細胞内局在

Cytoplasm. Nucleus. Mitochondrion matrix. According to PubMed:12398897, it is cytoplasmic and nuclear. According to PubMed:14732903, it is found in the mitochondrial matrix.

画像



3ug by SDS-PAGE under reducing conditions and visualized by coomassie blue stain.

Please note: All products are "FOR RESEARCH USE ONLY. NOT FOR USE IN DIAGNOSTIC PROCEDURES"

Our Abpromise to you: Quality guaranteed and expert technical support

- Replacement or refund for products not performing as stated on the datasheet

- Valid for 12 months from date of delivery
- Response to your inquiry within 24 hours
- We provide support in Chinese, English, French, German, Japanese and Spanish
- Extensive multi-media technical resources to help you
- We investigate all quality concerns to ensure our products perform to the highest standards

If the product does not perform as described on this datasheet, we will offer a refund or replacement. For full details of the Abpromise, please visit <https://www.abcam.co.jp/abpromise> or contact our technical team.

Terms and conditions

- Guarantee only valid for products bought direct from Abcam or one of our authorized distributors