

Recombinant Human ERK1 protein ab126906

画像数 1

製品の詳細

製品名	Recombinant Human ERK1 protein
精製度	> 85 % Densitometry. The purity was determined to be >85% by densitometry
発現系	Escherichia coli
アクセッション番号	<u>P27361</u>
タンパク質長	Full length protein
Animal free	No
由来	Recombinant
生物種	Human
予測される分子量	70 kDa including tags
領域	1 to 379

特性

Our **Abpromise guarantee** covers the use of **ab126906** in the following tested applications.

The application notes include recommended starting dilutions; optimal dilutions/concentrations should be determined by the end user.

アプリケーション	Western blot SDS-PAGE
製品の状態	Liquid
備考	ab126906 (Human ERK1 full length protein) can be utilized as a substrate for the following active protein kinases: <u>ab104027</u> (Active human MEKK1 protein fragment) <u>ab55721</u> (Active Raf1 (mutated F341 Q) protein fragment) <u>ab63209</u> (Active human MEK1 full length protein)

前処理および保存

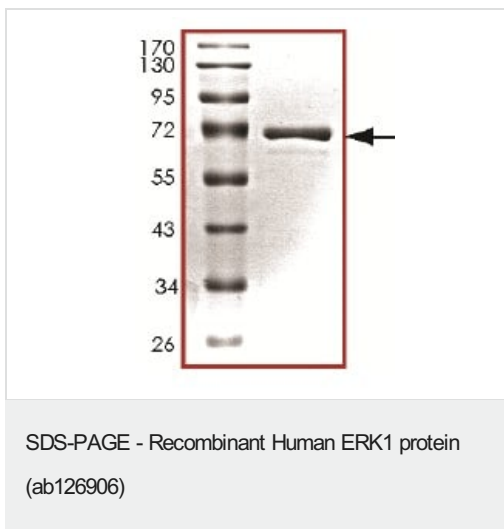
保存方法および安定性	Shipped on dry ice. Upon delivery aliquot and store at -80°C. Avoid freeze / thaw cycles. pH: 7.50
------------	---

Constituents: 0.31% Glutathione, 0.002% PMSF, 0.004% DTT, 0.79% Tris HCl, 0.003% EDTA, 25% Glycerol (glycerin, glycerine), 0.88% Sodium chloride

関連情報

機能	Involved in both the initiation and regulation of meiosis, mitosis, and postmitotic functions in differentiated cells by phosphorylating a number of transcription factors such as ELK-1. Phosphorylates EIF4EBP1; required for initiation of translation. Phosphorylates microtubule-associated protein 2 (MAP2). Phosphorylates SPZ1 (By similarity). Phosphorylates heat shock factor protein 4 (HSF4).
配列類似性	Belongs to the protein kinase superfamily. CMGC Ser/Thr protein kinase family. MAP kinase subfamily. Contains 1 protein kinase domain.
ドメイン	The TXY motif contains the threonine and tyrosine residues whose phosphorylation activates the MAP kinases.
翻訳後修飾	Dually phosphorylated on Thr-202 and Tyr-204, which activates the enzyme. Dephosphorylated by PTPRJ at Tyr-204.

画像



SDS-PAGE showing ab126906

Please note: All products are "FOR RESEARCH USE ONLY. NOT FOR USE IN DIAGNOSTIC PROCEDURES"

Our Abpromise to you: Quality guaranteed and expert technical support

- Replacement or refund for products not performing as stated on the datasheet
- Valid for 12 months from date of delivery
- Response to your inquiry within 24 hours
- We provide support in Chinese, English, French, German, Japanese and Spanish
- Extensive multi-media technical resources to help you
- We investigate all quality concerns to ensure our products perform to the highest standards

If the product does not perform as described on this datasheet, we will offer a refund or replacement. For full details of the Abpromise, please visit <https://www.abcam.co.jp/abpromise> or contact our technical team.

Terms and conditions

- Guarantee only valid for products bought direct from Abcam or one of our authorized distributors