

# Recombinant Human Ephrin A1 protein (denatured) ab113867

画像数 1

### 製品の詳細

製品名	Recombinant Human Ephrin A1 protein (denatured)
精製度	> 90 % SDS-PAGE.
発現系	Escherichia coli
アクセッション番号	<b><u>P20827</u></b>
タンパク質長	Full length protein
Animal free	No
由来	Recombinant
生物種	Human
配列	MGSSHHHHHHSSGLVPRGSHMDRHTVFWNSSNPKFRNEDYTI HVQLNDYV DIICPHYEDHSVADAAMEQYILYLVEHEEYQLCQPQSKDQVR WQCNRP KHGPEKLSEKFQRFTPFTLGKEFKEGHSYYYISKPIHQHEDR CLRLKVT SGKITHSPQAHVNPQEKRLAADDPEVRVLHSHS
予測される分子量	22 kDa including tags
領域	19 to 182
タグ	His tag N-Terminus
製品の詳細	Recombinant Human Ephrin A1 protein

### 特性

Our **Abpromise guarantee** covers the use of **ab113867** in the following tested applications.

The application notes include recommended starting dilutions; optimal dilutions/concentrations should be determined by the end user.

アプリケーション	SDS-PAGE
製品の状態	Liquid

### 前処理および保存

保存方法および安定性	Shipped at 4°C. Store at +4°C short term (1-2 weeks). Upon delivery aliquot. Store at -20°C or -
------------	--

80°C. Avoid freeze / thaw cycle.

pH: 8.00

Constituents: 2.4% Urea, 0.32% Tris HCl, 10% Glycerol (glycerin, glycerine)

## 関連情報

### 機能

Plays an important role in angiogenesis and tumor neovascularization. The recruitment of VAV2, VAV3 and PI3-kinase p85 subunit by phosphorylated EPHA2 is critical for EFNA1-induced RAC1 GTPase activation and vascular endothelial cell migration and assembly (By similarity). Exerts anti-oncogenic effects in tumor cells through activation and down-regulation of EPHA2. Activates EPHA2 by inducing tyrosine phosphorylation which leads to its internalization and degradation. Acts as a negative regulator in the tumorigenesis of gliomas by down-regulating EPHA2 and FAK. Can evoke collapse of embryonic neuronal growth cones.

### 組織特異性

Brain. Down-regulated in primary glioma tissues compared to the normal tissues. The soluble monomeric form is expressed in the glioblastoma multiforme (GBM) and breast cancer cells (at protein level).

### 配列類似性

Belongs to the ephrin family.

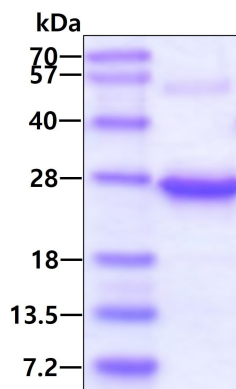
### 翻訳後修飾

Undergo proteolysis by a metalloprotease to give rise to a soluble monomeric form.

### 細胞内局在

Secreted and Cell membrane.

## 画像



3ug by SDS-PAGE under reducing conditions and visualized by coomassie blue stain.

SDS-PAGE - Recombinant Human Ephrin A1  
protein (denatured) (ab113867)

**Please note:** All products are "FOR RESEARCH USE ONLY. NOT FOR USE IN DIAGNOSTIC PROCEDURES"

## Our Abpromise to you: Quality guaranteed and expert technical support

- Replacement or refund for products not performing as stated on the datasheet
- Valid for 12 months from date of delivery

- Response to your inquiry within 24 hours
- We provide support in Chinese, English, French, German, Japanese and Spanish
- Extensive multi-media technical resources to help you
- We investigate all quality concerns to ensure our products perform to the highest standards

If the product does not perform as described on this datasheet, we will offer a refund or replacement. For full details of the Abpromise, please visit <https://www.abcam.co.jp/abpromise> or contact our technical team.

#### **Terms and conditions**

---

- Guarantee only valid for products bought direct from Abcam or one of our authorized distributors