

Recombinant human Eph receptor B2 protein ab60851

画像数 5

製品の詳細

製品名	Recombinant human Eph receptor B2 protein
生理活性	Specific Activity: 39 nmol/min/mg.
精製度	> 90 % Densitometry. Affinity purified.
発現系	Baculovirus infected Sf9 cells
アクセッション番号	<u>P29323-3</u>
タンパク質長	Protein fragment
Animal free	No
由来	Recombinant
生物種	Human
予測される分子量	66 kDa
領域	570 to 987
タグ	GST tag N-Terminus
配列の追加情報	Recombinant fragment, corresponding to amino acids 570-end of Human Eph receptor B2 (cytoplasmic domain).

特性

Our **Abpromise guarantee** covers the use of **ab60851** in the following tested applications.

The application notes include recommended starting dilutions; optimal dilutions/concentrations should be determined by the end user.

アプリケーション	SDS-PAGE Functional Studies
製品の状態	Liquid
備考	<u>ab204877</u> (Poly (4:1 Glu, Tyr) peptide) can be utilized as a substrate for assessing kinase activity

前処理および保存

保存方法および安定性	Shipped on dry ice. Upon delivery aliquot and store at -80°C. Avoid freeze / thaw cycles. pH: 7.50 Constituents: 0.0038% EGTA, 0.00174% PMSF, 0.00385% DTT, 0.79% Tris HCl, 0.00292%
------------	--

EDTA, 25% Glycerol (glycerin, glycerine), 0.87% Sodium chloride

This product is an active protein and may elicit a biological response in vivo, handle with caution.

関連情報

機能

Receptor for members of the ephrin-B family. Phosphorylates ARHGEF15, leading to its ubiquitination and degradation by the proteasome which promotes EFNB1-dependent synapse formation. Can function in aspects of retinal ganglion cell axon guidance to the optic disk even when lacking its tyrosine kinase domain. Acts as a tumor suppressor.

組織特異性

Brain, heart, lung, kidney, placenta, pancreas, liver and skeletal muscle. Preferentially expressed in fetal brain.

関連疾患

Defects in EPHB2 may be a cause of susceptibility to prostate cancer (PC) [MIM:176807]. It is a malignancy originating in tissues of the prostate. Most prostate cancers are adenocarcinomas that develop in the acini of the prostatic ducts. Other rare histopathologic types of prostate cancer that occur in approximately 5% of patients include small cell carcinoma, mucinous carcinoma, prostatic ductal carcinoma, transitional cell carcinoma, squamous cell carcinoma, basal cell carcinoma, adenoid cystic carcinoma (basaloid), signet-ring cell carcinoma and neuroendocrine carcinoma. Note=EPHB2 mutations have been found in a prostate cancer cell line derived from a brain metastasis.

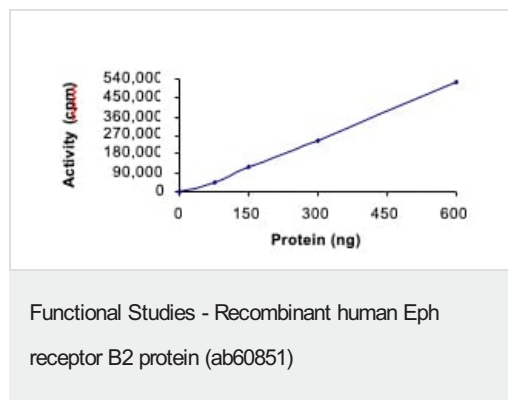
配列類似性

Belongs to the protein kinase superfamily. Tyr protein kinase family. Ephrin receptor subfamily. Contains 2 fibronectin type-III domains. Contains 1 protein kinase domain. Contains 1 SAM (sterile alpha motif) domain.

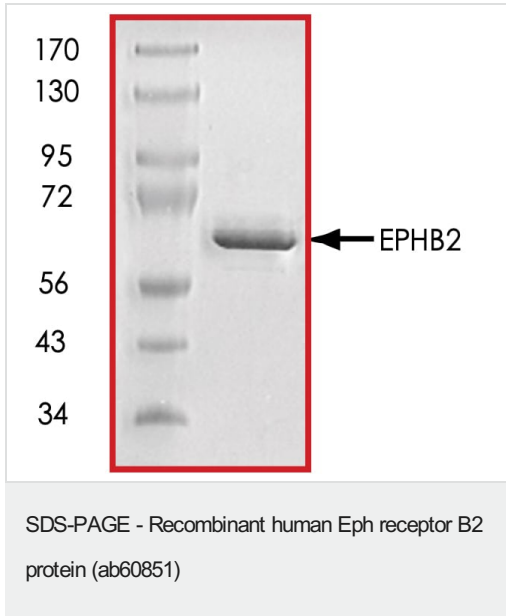
細胞内局在

Membrane.

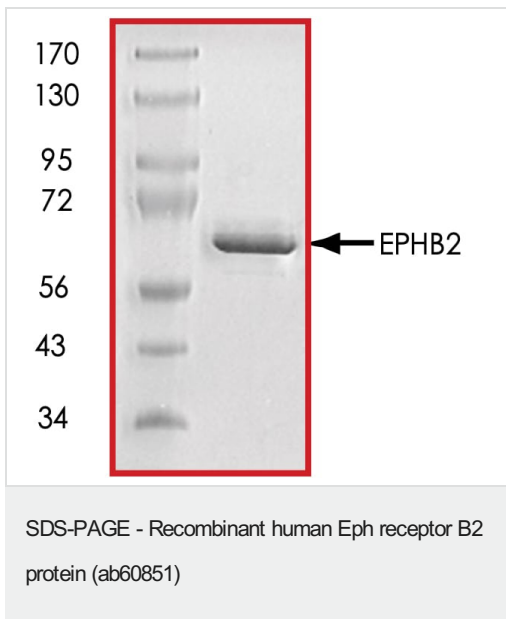
画像



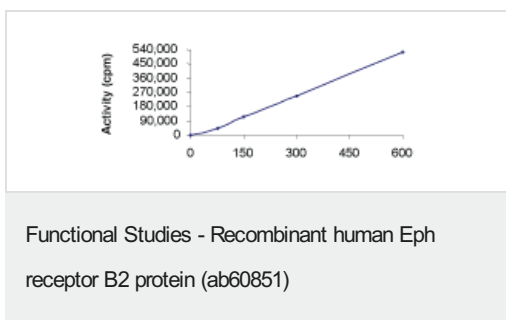
The specific activity of Eph receptor B2 (ab60851) was determined to be 39 nmol/min/mg as per activity assay protocol



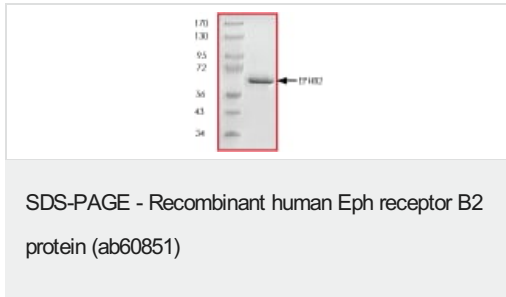
SDS PAGE analysis of ab60851



SDS PAGE analysis of ab60851



Sample Kinase Activity Plot.



ab60851 on SDS-PAGE, MW ~66 kDa.

Please note: All products are "FOR RESEARCH USE ONLY. NOT FOR USE IN DIAGNOSTIC PROCEDURES"

Our Abpromise to you: Quality guaranteed and expert technical support

- Replacement or refund for products not performing as stated on the datasheet
- Valid for 12 months from date of delivery
- Response to your inquiry within 24 hours
- We provide support in Chinese, English, French, German, Japanese and Spanish
- Extensive multi-media technical resources to help you
- We investigate all quality concerns to ensure our products perform to the highest standards

If the product does not perform as described on this datasheet, we will offer a refund or replacement. For full details of the Abpromise, please visit <https://www.abcam.co.jp/abpromise> or contact our technical team.

Terms and conditions

- Guarantee only valid for products bought direct from Abcam or one of our authorized distributors