

Product datasheet

Recombinant Human EDJ protein ab105636

画像数 1

製品の詳細

製品名	Recombinant Human EDJ protein
精製度	> 90 % SDS-PAGE. Purified using conventional chromatography techniques.
発現系	Escherichia coli
アクセッション番号	<u>Q9UBS4</u>
タンパク質長	Full length protein
Animal free	No
由来	Recombinant
生物種	Human
配列	MGSSHHHHHSSGLVPRGSHMGRDFYKILGVPRASIKDIKK AYRKLALQ LHPDRNPDDPQAQEKFQDLGAAYEVLSDSEKRKQYDTYGEEG LKDGHQSS HGDIFSHFFGDFGFMFGGTTPRQQDRNI PRGSDIIVDLEVTLE EYAGNFV EVVRNKPVARQAPGKRKCNCRQEMRTTQLGPGRFQMTQEVVC DECPNVKL VNEERTLEVEIEPGVRDGM EYPFIGEGEPHVDGEPGLRFRI KVVKHPIF ERRGDDLYTNVTISLVESLVGFEMDITHLDGHKVHISRDKIT RPGAKLWK KGEGLPNFDNNNIKSLIITFDVDFPKEQLTEEAREGIKQLL KQGSVQKV YNGLQGY
予測される分子量	41 kDa including tags
領域	23 to 358
タグ	His tag N-Terminus

特性

Our **Abpromise guarantee** covers the use of **ab105636** in the following tested applications.

The application notes include recommended starting dilutions; optimal dilutions/concentrations should be determined by the end user.

アプリケーション SDS-PAGE

Mass Spectrometry

質量分析

MALDI-TOF

製品の状態

Liquid

備考

Previously labelled as DNAJB11.

前処理および保存

保存方法および安定性

Shipped at 4°C. Store at +4°C short term (1-2 weeks). Upon delivery aliquot. Store at -20°C or -80°C. Avoid freeze / thaw cycle.

pH: 8.00

Constituents: 0.0308% DTT, 0.316% Tris HCl, 10% Glycerol (glycerin, glycerine), 0.58% Sodium chloride

関連情報

機能

Serves as a co-chaperone for HSPA5. Binds directly to both unfolded proteins that are substrates for ERAD and nascent unfolded peptide chains, but dissociates from the HSPA5-unfolded protein complex before folding is completed. May help recruiting HSPA5 and other chaperones to the substrate. Stimulates HSPA5 ATPase activity.

組織特異性

Widely expressed.

配列類似性

Contains 1 J domain.

翻訳後修飾

Contains high-mannose Endo H-sensitive carbohydrates.

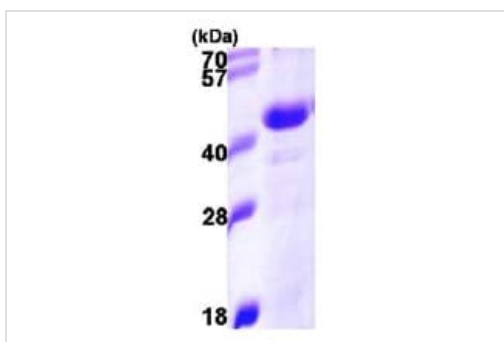
Cys-169, Cys-171, Cys-193 and Cys-196 form intramolecular disulfide bonds. The preferential partner for each Cys is not known.

Thr-188 was reported (PubMed:17525332) to be phosphorylated upon DNA damage by ATM or ATR; however as this position has been shown to be in the ER lumen, the in vivo relevance is not proven.

細胞内局在

Endoplasmic reticulum lumen. Associated with the ER membrane in a C-terminally epitope-tagged construct.

画像



15% SDS-PAGE analysis of ab105636 (3ug)

SDS-PAGE - Recombinant Human EDJ protein
(ab105636)

Please note: All products are "FOR RESEARCH USE ONLY. NOT FOR USE IN DIAGNOSTIC PROCEDURES"

Our Abpromise to you: Quality guaranteed and expert technical support

- Replacement or refund for products not performing as stated on the datasheet
- Valid for 12 months from date of delivery
- Response to your inquiry within 24 hours

- We provide support in Chinese, English, French, German, Japanese and Spanish
- Extensive multi-media technical resources to help you
- We investigate all quality concerns to ensure our products perform to the highest standards

If the product does not perform as described on this datasheet, we will offer a refund or replacement. For full details of the Abpromise, please visit <https://www.abcam.co.jp/abpromise> or contact our technical team.

Terms and conditions

- Guarantee only valid for products bought direct from Abcam or one of our authorized distributors