

Recombinant Human EBI3 protein ab83026

1 References [画像数 2](#)

製品の詳細

製品名	Recombinant Human EBI3 protein
精製度	> 95 % SDS-PAGE.
発現系	Escherichia coli
アクセッション番号	<u>Q14213</u>
タンパク質長	Full length protein
Animal free	No
由来	Recombinant
生物種	Human
配列	RKGPPAALTLP RVQCRASRYPIAVDCSWTLPPAPNSTSPV SFIATYRL GMAARGHWPCLQQTPSTSTCTITDVQLFSMAPYVLNVTAVH PWGSSSSF VP FITEHIIKPDPPGVRLSPLAERQLQVQWEPPGSWPFPEIFS LKYW IRYKRQGAARFHRV GPIEATSFILRAVRPRARYYVQVAAQDLTDYGEL SDWSLPATATMSLGK
領域	21 to 229
タグ	His tag N-Terminus
配列の追加情報	This aa sequence represents the mature full length minus the signal peptide from aa 1 to 20. The His tag is a hexahistidine tag.

特性

Our **Abpromise guarantee** covers the use of **ab83026** in the following tested applications.

The application notes include recommended starting dilutions; optimal dilutions/concentrations should be determined by the end user.

アプリケーション	SDS-PAGE
	Western blot

製品の状態	Liquid
-------	--------

前処理および保存

保存方法および安定性

Shipped at 4°C. Store at -20°C. Stable for 12 months at -20°C.

pH: 7.20

Constituents: PBS, 50% Glycerol

関連情報

機能

Associates with IL27 to form the IL-27 interleukin, a heterodimeric cytokine which functions in innate immunity. IL-27 has pro- and anti-inflammatory properties, that can regulate T-helper cell development, suppress T-cell proliferation, stimulate cytotoxic T-cell activity, induce isotype switching in B-cells, and that has diverse effects on innate immune cells. Among its target cells are CD4 T-helper cells which can differentiate in type 1 effector cells (TH1), type 2 effector cells (TH2) and IL17 producing helper T-cells (TH17). It drives rapid clonal expansion of naive but not memory CD4 T-cells. It also strongly synergizes with IL-12 to trigger interferon-gamma/IFN-gamma production of naive CD4 T-cells, binds to the cytokine receptor WSX-1/TCCR. Another important role of IL-27 is its antitumor activity as well as its antiangiogenic activity with activation of production of antiangiogenic chemokines.

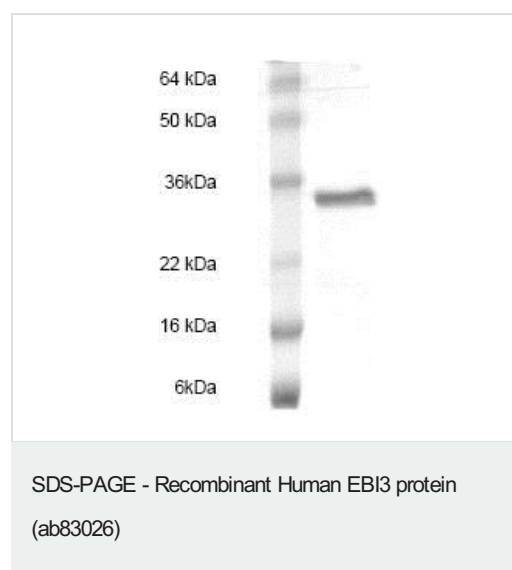
配列類似性

Belongs to the type I cytokine receptor family. Type 3 subfamily.
Contains 2 fibronectin type-III domains.

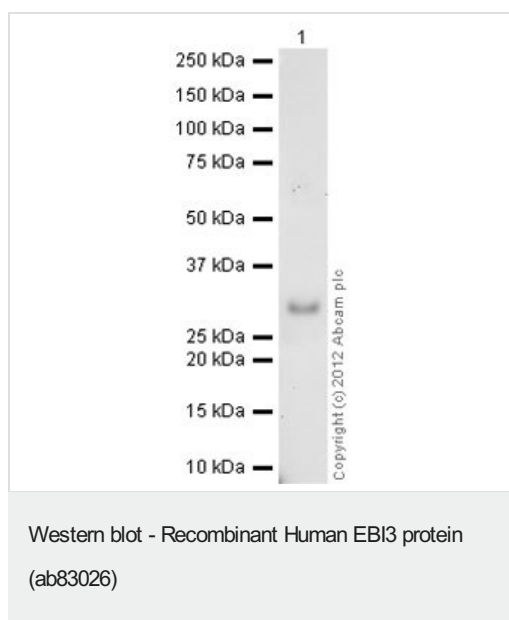
細胞内局在

Secreted.

画像



SDS-PAGE showing ab83026.



Anti-EBI3 antibody (**ab72330**) at 2 µg/ml + Recombinant Human EBI3 protein (ab83026) at 0.1 µg

Secondary

Goat Anti-Rabbit IgG H&L (HRP) preadsorbed (**ab97080**) at 1/5000 dilution

Developed using the ECL technique.

Performed under reducing conditions.

Exposure time: 8 minutes

Please note: All products are "FOR RESEARCH USE ONLY. NOT FOR USE IN DIAGNOSTIC PROCEDURES"

Our Abpromise to you: Quality guaranteed and expert technical support

- Replacement or refund for products not performing as stated on the datasheet
- Valid for 12 months from date of delivery
- Response to your inquiry within 24 hours
- We provide support in Chinese, English, French, German, Japanese and Spanish
- Extensive multi-media technical resources to help you
- We investigate all quality concerns to ensure our products perform to the highest standards

If the product does not perform as described on this datasheet, we will offer a refund or replacement. For full details of the Abpromise, please visit <https://www.abcam.co.jp/abpromise> or contact our technical team.

Terms and conditions

- Guarantee only valid for products bought direct from Abcam or one of our authorized distributors