

Recombinant human DPP4 protein ab79138

2 References 画像数 3

製品の詳細

製品名	Recombinant human DPP4 protein
生理活性	Specific activity is > 200unit/mg, One unit produces 1.0 umole of p-Nitroaniline from Gly-Pro- p-Nitroaniline per minute at pH 8.0 at 37°C.
精製度	> 95 % SDS-PAGE. Affinity purified
発現系	Baculovirus infected BTI-TN-5B1-4 cells
アクセッション番号	<u>P27487</u>
タンパク質長	Full length protein
Animal free	No
由来	Recombinant
生物種	Human
配列	

SRKTYTLTDYLK NTYRLKLYSL RWISDHEYLY
KQENNILVFN AEYGNSSVFL ENSTFDEFGH
SINDYSISPD GQFILLEyny VKQWRHSYTA
SYDIYDLNKR QLITEERIPN NTQWVTWSPV
GHKLAYVWNN DIYVKIEPNL PSYRITWTGK
EDIIYNGITD WYEEEEVFSA YSALWSPNG
TFLAYAQFND TEVPLIEYSF YSDESLQYPK
TVRVPYPKAG AVNPTVKFFV VNTDSLSSVT
NATSIQITAP ASMLIGDHYL CDVTWATQER
ISLQWLRIQ NYSVMDICDY DESSGRWNCL
VARQHIEMST TGWVGRFRPS EPHFTLDGNS
FYKIISNEEG YRHICYFQID KKDCTFITKG
TWEVIGIEAL TSDYLYYISN EYKGMPGGRN
LYKIQLSDYT KVTCLSCELN PERCQYYSVS
FSKEAKYYQL RCSGPGLPLY TLHSSVNDKG
LRVLEDNSAL DKMLQNVQMP SKKLDFIILN
ETKFWYQMIL PPHFDKSKKY PLLLDVYAGP
CSQKADTVFR LNWATYLAST ENIIVASFDG
RSGYQGDKI MHAINRRLGT FEVEDQIEAA
RQFSKMGFVD NKRIAIWGS YGGYVTSMLV
GSGSGVFKCG IAVAPVSRWE YYDSVYTERY
MGLPTPEDNL DHYRNSTVMS RAENFKQVEY
LLIHGTADDN VHFQQSAQIS KALVDVGVDf

領域 39 to 766

特性

Our **Abpromise guarantee** covers the use of **ab79138** in the following tested applications.

The application notes include recommended starting dilutions; optimal dilutions/concentrations should be determined by the end user.

アプリケーション Western blot
SDS-PAGE

製品の状態 Liquid

前処理および保存

保存方法および安定性 Shipped at 4°C. Upon delivery aliquot. Store at -80°C. Avoid freeze / thaw cycle.
pH: 8.00
Constituents: 0.316% Tris HCl, 0.0292% EDTA, 10% Glycerol (glycerin, glycerine), 0.58% Sodium chloride
This product is an active protein and may elicit a biological response in vivo, handle with caution.

関連情報

機能 Cell surface glycoprotein receptor involved in the costimulatory signal essential for T-cell receptor (TCR)-mediated T-cell activation. Acts as a positive regulator of T-cell coactivation, by binding at least ADA, CAV1, IGF2R, and PTPRC. Its binding to CAV1 and CARD11 induces T-cell proliferation and NF-kappa-B activation in a T-cell receptor/CD3-dependent manner. Its interaction with ADA also regulates lymphocyte-epithelial cell adhesion. In association with FAP is involved in the pericellular proteolysis of the extracellular matrix (ECM), the migration and invasion of endothelial cells into the ECM. May be involved in the promotion of lymphatic endothelial cells adhesion, migration and tube formation. When overexpressed, enhanced cell proliferation, a process inhibited by GPC3. Acts also as a serine exopeptidase with a dipeptidyl peptidase activity that regulates various physiological processes by cleaving peptides in the circulation, including many chemokines, mitogenic growth factors, neuropeptides and peptide hormones. Removes N-terminal dipeptides sequentially from polypeptides having unsubstituted N-termini provided that the penultimate residue is proline.

組織特異性 Expressed specifically in lymphatic vessels but not in blood vessels in the skin, small intestine, esophagus, ovary, breast and prostate glands. Not detected in lymphatic vessels in the lung, kidney, uterus, liver and stomach (at protein level). Expressed in the poorly differentiated crypt cells of the small intestine as well as in the mature villous cells. Expressed at very low levels in the colon.

配列類似性 Belongs to the peptidase S9B family. DPPIV subfamily.

ドメイン The extracellular cysteine-rich region is necessary for association with collagen, dimer formation and optimal dipeptidyl peptidase activity.

翻訳後修飾 The soluble form (Dipeptidyl peptidase 4 soluble form also named SDPP) derives from the membrane form (Dipeptidyl peptidase 4 membrane form also named MDPP) by proteolytic processing.

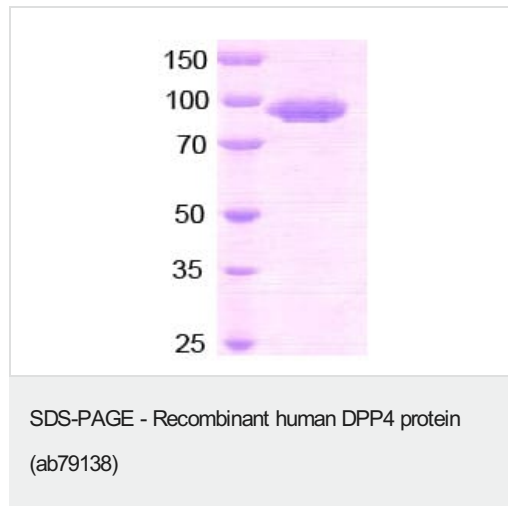
N- and O-Glycosylated.

Phosphorylated. Mannose 6-phosphate residues in the carbohydrate moiety are necessary for interaction with IGF2R in activated T-cells. Mannose 6-phosphorylation is induced during T-cell activation.

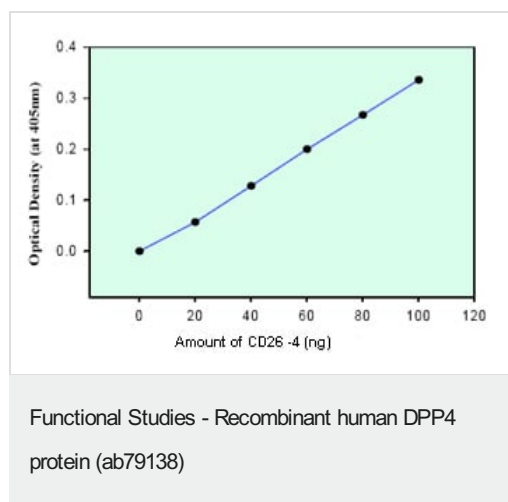
細胞内局在

Cell membrane. Apical cell membrane. Cell projection > invadopodium membrane. Cell projection > lamellipodium membrane. Cell junction. Membrane raft. Translocated to the apical membrane through the concerted action of N- and O-Glycans and its association with lipid microdomains containing cholesterol and sphingolipids. Redistributed to membrane rafts in T-cell in a interleukin-12-dependent activation. Its interaction with CAV1 is necessary for its translocation to membrane rafts. Colocalized with PTPRC in membrane rafts. Colocalized with FAP in invadopodia and lamellipodia of migratory activated endothelial cells in collagenous matrix. Colocalized with FAP on endothelial cells of capillary-like microvessels but not large vessels within invasive breast ductal carcinoma. Colocalized with ADA at the cell junction in lymphocyte-epithelial cell adhesion. Colocalized with IGF2R in internalized cytoplasmic vesicles adjacent to the cell surface and Secreted. Detected in the serum and the seminal fluid.

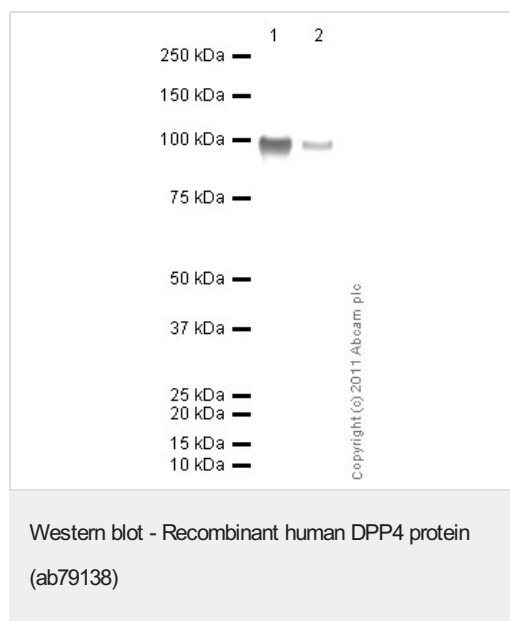
画像



10% SDS-PAGE showing ab79138 at approximately 90kDa (2μg).



Optical density was measured at 405 nm after incubating enzyme solution with 1mM of p-nitroanilid as a substrate.



All lanes : Anti-DPP4 antibody (**ab86806**) at 1 µg/ml

Lane 1 : Recombinant human DPP4 protein (ab79138) at 0.1 µg

Lane 2 : Recombinant human DPP4 protein (ab79138) at 0.01 µg

Secondary

All lanes : Goat Anti-Rabbit IgG H&L (HRP) preadsorbed (**ab97080**) at 1/5000 dilution

Developed using the ECL technique.

Performed under reducing conditions.

Exposure time: 10 seconds

Please note: All products are "FOR RESEARCH USE ONLY. NOT FOR USE IN DIAGNOSTIC PROCEDURES"

Our Abpromise to you: Quality guaranteed and expert technical support

- Replacement or refund for products not performing as stated on the datasheet
- Valid for 12 months from date of delivery
- Response to your inquiry within 24 hours
- We provide support in Chinese, English, French, German, Japanese and Spanish
- Extensive multi-media technical resources to help you
- We investigate all quality concerns to ensure our products perform to the highest standards

If the product does not perform as described on this datasheet, we will offer a refund or replacement. For full details of the Abpromise, please visit <https://www.abcam.co.jp/abpromise> or contact our technical team.

Terms and conditions

- Guarantee only valid for products bought direct from Abcam or one of our authorized distributors