

Recombinant Human Dopamine Transporter protein ab112352

★★★★★ [1 Abreviews](#) [画像数 1](#)

製品の詳細

製品名	Recombinant Human Dopamine Transporter protein	
発現系	Wheat germ	
アクセッション番号	Q01959	
タンパク質長	Protein fragment	
Animal free	No	
由来	Recombinant	
生物種	Human	
配列	AWALHYLFSSFTTELPIHCNNSWNSPNCSDAHPGDSSGDSS GLNDFGT TPAAEYFERGVLHLHQSHGIDDLGPPR	
予測される分子量	34 kDa including tags	
領域	161 to 237	
タグ	GST tag N-Terminus	

特性

Our **Abpromise guarantee** covers the use of **ab112352** in the following tested applications.

The application notes include recommended starting dilutions; optimal dilutions/concentrations should be determined by the end user.

アプリケーション	SDS-PAGE
	ELISA
	Western blot

製品の状態	Liquid
-------	--------

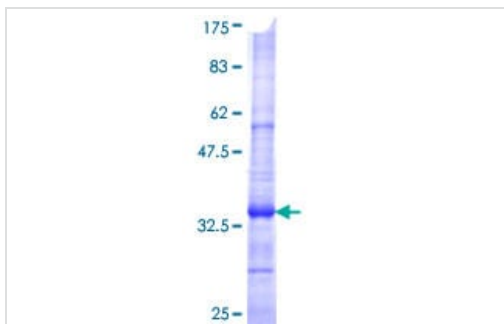
前処理および保存

保存方法および安定性	Shipped on dry ice. Upon delivery aliquot and store at -80°C. Avoid freeze / thaw cycles. pH: 8.00 Constituents: 0.31% Glutathione, 0.79% Tris HCl
------------	--

関連情報

機能	Amine transporter. Terminates the action of dopamine by its high affinity sodium-dependent reuptake into presynaptic terminals.
関連疾患	Defects in SLC6A3 are the cause of dystonia-parkinsonism infantile (DYTPRI) [MIM:613135]. It is a neurodegenerative disorder characterized by infantile onset of parkinsonism and dystonia. Other neurologic features include global developmental delay, bradikinesia and pyramidal tract signs.
配列類似性	Belongs to the sodium:neurotransmitter symporter (SNF) (TC 2.A.22) family. SLC6A3 subfamily.
細胞内局在	Membrane.

画像



ab112352 analysed on a 12.5% SDS-PAGE gel stained with Coomassie Blue.

SDS-PAGE - Recombinant Human Dopamine
Transporter protein (ab112352)

Please note: All products are "FOR RESEARCH USE ONLY. NOT FOR USE IN DIAGNOSTIC PROCEDURES"

Our Abpromise to you: Quality guaranteed and expert technical support

- Replacement or refund for products not performing as stated on the datasheet
- Valid for 12 months from date of delivery
- Response to your inquiry within 24 hours
- We provide support in Chinese, English, French, German, Japanese and Spanish
- Extensive multi-media technical resources to help you
- We investigate all quality concerns to ensure our products perform to the highest standards

If the product does not perform as described on this datasheet, we will offer a refund or replacement. For full details of the Abpromise, please visit <https://www.abcam.co.jp/abpromise> or contact our technical team.

Terms and conditions

- Guarantee only valid for products bought direct from Abcam or one of our authorized distributors