

Product datasheet

Recombinant Human DNAJB6 protein ab105132

画像数 1

製品の詳細

製品名	Recombinant Human DNAJB6 protein
精製度	> 85 % SDS-PAGE.
発現系	Escherichia coli
アクセッション番号	<u>O75190</u>
タンパク質長	Full length protein
Animal free	No
由来	Recombinant
生物種	Human
配列	ab105132 is purified using conventional chromatography techniques.
予測される分子量	39 kDa including tags
領域	1 to 326
タグ	His tag N-Terminus

特性

Our **Abpromise guarantee** covers the use of **ab105132** in the following tested applications.

The application notes include recommended starting dilutions; optimal dilutions/concentrations should be determined by the end user.

アプリケーション	SDS-PAGE Mass Spectrometry
質量分析	MALDI-TOF
製品の状態	Liquid

前処理および保存

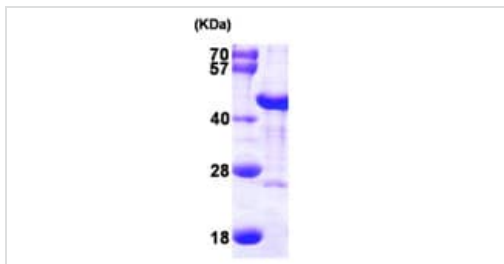
保存方法および安定性	Shipped at 4°C. Upon delivery aliquot and store at -20°C or -80°C. Avoid repeated freeze / thaw cycles. pH: 8.00 Constituents: 0.077% DTT, 0.316% Tris HCl, 30% Glycerol (glycerin, glycerine), 1.16% Sodium
------------	--

chloride

関連情報

機能	Plays an indispensable role in the organization of KRT8/KRT18 filaments. Acts as an endogenous molecular chaperone for neuronal proteins including huntingtin. Suppresses aggregation and toxicity of polyglutamine-containing, aggregation-prone proteins. Isoform B but not isoform A inhibits huntingtin aggregation. Has a stimulatory effect on the ATPase activity of HSP70 in a dose-dependent and time-dependent manner and hence acts as a co-chaperone of HSP70. Also reduces cellular toxicity and caspase-3 activity.
組織特異性	Widely expressed. Highest levels in testis and brain, and lower levels in heart, spleen, intestine, ovary, placenta, lung, kidney, pancreas, thymus, prostate, skeletal muscle, liver and leukocytes. In testis, expressed in germ cells in the earlier stages of differentiation pathway as well as in spermatids. In brain, expressed at a higher level in hippocampus and thalamus and a lower level in amygdala, substantia nigra, corpus callosum and caudate nucleus.
関連疾患	Limb-girdle muscular dystrophy 1E
配列類似性	Contains 1 J domain.
ドメイン	The antiaggregation activity of isoform B resides in the serine-rich region and the C-terminus.
細胞内局在	Cytoplasm, perinuclear region. Nucleus. Cytoplasm, myofibril, sarcomere, Z line.

画像



SDS-PAGE - Recombinant Human DNAJB6 protein (ab105132)

15% SDS-PAGE showing ab105132 (3 µg) at approximately 38.5 kDa.

Please note: All products are "FOR RESEARCH USE ONLY. NOT FOR USE IN DIAGNOSTIC PROCEDURES"

Our Abpromise to you: Quality guaranteed and expert technical support

- Replacement or refund for products not performing as stated on the datasheet
- Valid for 12 months from date of delivery
- Response to your inquiry within 24 hours
- We provide support in Chinese, English, French, German, Japanese and Spanish
- Extensive multi-media technical resources to help you
- We investigate all quality concerns to ensure our products perform to the highest standards

If the product does not perform as described on this datasheet, we will offer a refund or replacement. For full details of the Abpromise, please visit <https://www.abcam.co.jp/abpromise> or contact our technical team.

Terms and conditions

- Guarantee only valid for products bought direct from Abcam or one of our authorized distributors