

Recombinant Human DNA Polymerase lambda protein ab113399

画像数 1

製品の詳細

製品名	Recombinant Human DNA Polymerase lambda protein
精製度	> 90 % SDS-PAGE. Conventional chromatography techniques (anion exchange followed by gel filtration with 20mM Tris pH 7.5, 2mM EDTA).
発現系	Escherichia coli
アクセッション番号	<u>Q9UGP5-2</u>
タンパク質長	Full length protein
Animal free	No
由来	Recombinant
生物種	Human
配列	MGSSHHHHHSSGLVPRGSHMLMHHQKYLQRFLGGKREKKQK EACSIPGI GKRMAEKIIEIILESGHLRKLDDHISESVPVLELFSNIWGAGTK TAQMWYQQ GFRSLEDIRSQASLTTQQAIGLKHYSDFLERMPREEATEIEQ TVQKAAQA FNSGLLCVACGSYRRGKATCGDVDVLITHPDGRSHRGIFSRLL LDSLREQG FLTDDLVSQEENGQQKYLGVCRLPGPGRHRRLDIIIVPYS EFACALLY FTGSAHFNRSRALAKTKGMSLSEHALSTAVVRNTHGCKVGP GRVLPPTPT EKDVFRLLGLPYREPAERDW
予測される分子量	36 kDa
領域	1 to 300
タグ	His tag N-Terminus
配列の追加情報	The protein sequence refers to isoform 2 and contains MGSSHHHHHSSGLVPRGSH sequence at N-Terminus for the His tag.
製品の詳細	Recombinant Human DNA Polymerase lambda/Polk protein

特性

Our [Abpromise guarantee](#) covers the use of **ab113399** in the following tested applications.

The application notes include recommended starting dilutions; optimal dilutions/concentrations should be determined by the end user.

アプリケーション	Mass Spectrometry
	SDS-PAGE
質量分析	MALDI-TOF
製品の状態	Liquid
備考	

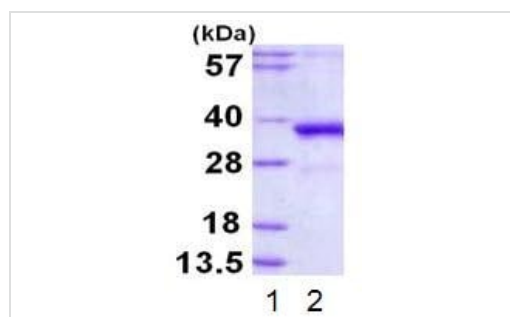
前処理および保存

保存方法および安定性	Shipped at 4°C. Store at +4°C short term (1-2 weeks). Upon delivery aliquot. Store at -20°C or -80°C. Avoid freeze / thaw cycle. pH: 8.00 Constituents: 0.02% DTT, 0.32% Tris HCl, 30% Glycerol (glycerin, glycerine), 0.58% Sodium chloride
------------	--

関連情報

機能	Repair polymerase. Involved in base excision repair (BER) responsible for repair of lesions that give rise to abasic (AP) sites in DNA. Has both DNA polymerase and terminal transferase activities. Has a 5'-deoxyribose-5-phosphate lyase (dRP lyase) activity.
組織特異性	Expressed in a number of tissues. Abundant in testis.
配列類似性	Belongs to the DNA polymerase type-X family. Contains 1 BRCT domain.
翻訳後修飾	Phosphorylated upon DNA damage, probably by ATM or ATR.
細胞内局在	Nucleus.

画像



15% SDS-PAGE of DNA Polymerase lambda protein: (1) MW ladder, (2) protein loaded 3ug

SDS-PAGE - Recombinant Human DNA
Polymerase lambda protein (ab113399)

Please note: All products are "FOR RESEARCH USE ONLY. NOT FOR USE IN DIAGNOSTIC PROCEDURES"

Our Abpromise to you: Quality guaranteed and expert technical support

- Replacement or refund for products not performing as stated on the datasheet
- Valid for 12 months from date of delivery
- Response to your inquiry within 24 hours

- We provide support in Chinese, English, French, German, Japanese and Spanish
- Extensive multi-media technical resources to help you
- We investigate all quality concerns to ensure our products perform to the highest standards

If the product does not perform as described on this datasheet, we will offer a refund or replacement. For full details of the Abpromise, please visit <https://www.abcam.co.jp/abpromise> or contact our technical team.

Terms and conditions

- Guarantee only valid for products bought direct from Abcam or one of our authorized distributors