

Product datasheet

Recombinant Human Desmuslin/SYN protein ab161606

画像数 1

製品の詳細

製品名	Recombinant Human Desmuslin/SYN protein	
発現系	Wheat germ	
タンパク質長	Protein fragment	
Animal free	No	
由来	Recombinant	
生物種	Human	
配列	VSNVEAIRSRTQEAGALGVSDRGSWRDADSRNDQAVGVSFKA SAGEGDQA HREQKEQAMFDKKVQLQRMVDQRSVISDEKKVALLYLDNEE EENDGHWF	
領域	1466 to 1565	
タグ	GST tag N-Terminus	

特性

Our **Abpromise guarantee** covers the use of **ab161606** in the following tested applications.

The application notes include recommended starting dilutions; optimal dilutions/concentrations should be determined by the end user.

アプリケーション	ELISA
	Western blot
製品の状態	Liquid
備考	This product was previously labelled as Desmuslin. This protein fragment was used as an immunogen for ab89228 .

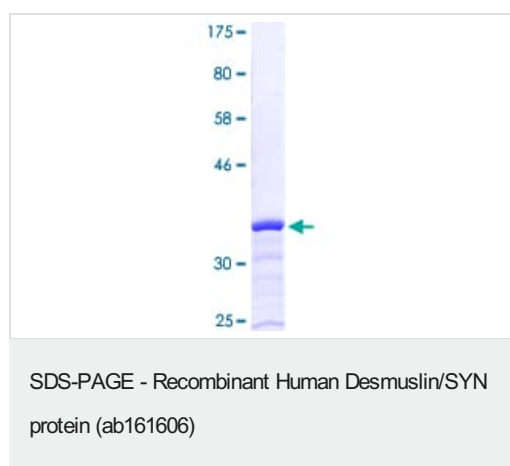
前処理および保存

保存方法および安定性	Shipped on dry ice. Upon delivery aliquot and store at -80°C. Avoid freeze / thaw cycles. pH: 8.00 Constituents: 0.31% Glutathione, 0.79% Tris HCl
------------	--

関連情報

機能	Type-VI intermediate filament (IF) which plays an important cytoskeletal role within the muscle cell cytoskeleton. It forms heteropolymeric IFs with desmin and/or vimentin, and via its interaction with cytoskeletal proteins alpha-dystrobrevin, dystrophin, talin-1, utrophin and vinculin, is able to link these heteropolymeric IFs to adherens-type junctions, such as to the costameres, neuromuscular junctions, and myotendinous junctions within striated muscle cells.
組織特異性	Isoform 2 is strongly detected in adult heart, fetal skeletal muscles and fetal heart. Isoform 1 is weakly detected in fetal heart and also in fetal skeletal muscle. Isoform 1 and isoform 2 are detected in adult bladder (at protein level). The mRNA is predominantly expressed in heart and muscle with some expression in brain which may be due to tissue-specific isoforms.
配列類似性	Belongs to the intermediate filament family.
発生段階	In lens, first detected at 16 weeks when expression is weakly and uniformly distributed. Subsequently, expression becomes much stronger in the epithelium of the anterior part at 25 weeks and later. In retina, weakly expressed at 15 weeks in the nerve fiber and ganglion cell layers (NFL and GCL). From 25 weeks onwards, much stronger expression is observed in the endfeet of Mueller cells, the NFL, and GCL, and much lower expression is observed in a minor subpopulation of cells in the inner cell layer (INL). At 30 and 36 weeks, expression remains in the neural retina, and subsequently becomes stronger in the NFL, GCL, and INL and is decreased in Mueller cells. At 36 weeks, also expressed at the external border of the outer nuclear layer (ONL) (at protein level).
細胞内局在	Cytoplasm, cytoskeleton. Cell junction, adherens junction. There are at least two distinct SYNM subpopulations, one in which SYMN interacts with DES within the Z-lines, and another in which it interacts with both DTNA and DES at the costamere.

画像



ab161606 on a 12.5% SDS-PAGE stained with Coomassie Blue.

Please note: All products are "FOR RESEARCH USE ONLY. NOT FOR USE IN DIAGNOSTIC PROCEDURES"

Our Abpromise to you: Quality guaranteed and expert technical support

- Replacement or refund for products not performing as stated on the datasheet
- Valid for 12 months from date of delivery
- Response to your inquiry within 24 hours

- We provide support in Chinese, English, French, German, Japanese and Spanish
- Extensive multi-media technical resources to help you
- We investigate all quality concerns to ensure our products perform to the highest standards

If the product does not perform as described on this datasheet, we will offer a refund or replacement. For full details of the Abpromise, please visit <https://www.abcam.co.jp/abpromise> or contact our technical team.

Terms and conditions

- Guarantee only valid for products bought direct from Abcam or one of our authorized distributors