

Recombinant Human DEFA6 protein ab116983

画像数 1

製品の詳細

製品名	Recombinant Human DEFA6 protein
発現系	Wheat germ
アクセッション番号	<u>Q01524</u>
タンパク質長	Full length protein
Animal free	No
由来	Recombinant
生物種	Human
配列	MRTLILTAVLLVALQAKAEPLQAEDDPLQAKAYEADAQEQR GANDQDFA VSFAEDASSSLRALGSTRAFTCHCRRSCYSTEYSYGTCTVMG INHRFCCL
予測される分子量	37 kDa including tags
領域	1 to 100

特性

Our **Abpromise guarantee** covers the use of **ab116983** in the following tested applications.

The application notes include recommended starting dilutions; optimal dilutions/concentrations should be determined by the end user.

アプリケーション	Western blot
	SDS-PAGE
	ELISA
製品の状態	Liquid

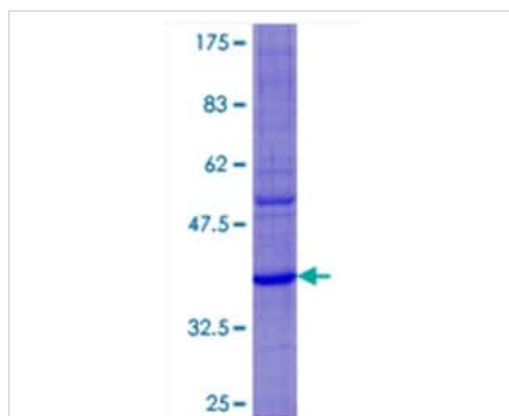
前処理および保存

保存方法および安定性	Shipped on dry ice. Upon delivery aliquot and store at -80°C. Avoid freeze / thaw cycles. pH: 8.00 Constituents: 0.3% Glutathione, 0.79% Tris HCl
------------	---

関連情報

機能	Has very low antimicrobial activity against Gram-negative and Gram-positive bacteria. May protect cells against infection with HIV-1.
組織特異性	Paneth cells of the small intestine.
配列類似性	Belongs to the alpha-defensin family.
細胞内局在	Secreted.

画像



12.5% SDS-PAGE showing ab116983 at approximately 37.07kDa.
Stained with Coomassie Blue.

SDS-PAGE - Recombinant Human DEFA6 protein
(ab116983)

Please note: All products are "FOR RESEARCH USE ONLY. NOT FOR USE IN DIAGNOSTIC PROCEDURES"

Our Abpromise to you: Quality guaranteed and expert technical support

- Replacement or refund for products not performing as stated on the datasheet
- Valid for 12 months from date of delivery
- Response to your inquiry within 24 hours
- We provide support in Chinese, English, French, German, Japanese and Spanish
- Extensive multi-media technical resources to help you
- We investigate all quality concerns to ensure our products perform to the highest standards

If the product does not perform as described on this datasheet, we will offer a refund or replacement. For full details of the Abpromise, please visit <https://www.abcam.co.jp/abpromise> or contact our technical team.

Terms and conditions

- Guarantee only valid for products bought direct from Abcam or one of our authorized distributors