

Recombinant human DDR2 protein (ab96401) ab96401

画像数 5

製品の詳細

製品名	Recombinant human DDR2 protein (ab96401)
生理活性	The Specific activity of ab96401 was determined to be 48 nmol/min/mg. The specific activity was determined to be 48 nmol/min/mg.
精製度	> 90 % Densitometry. Affinity purified.
発現系	Baculovirus infected insect cells
アクセッション番号	<u>Q16832</u>
タンパク質長	Protein fragment
Animal free	No
由来	Recombinant
生物種	Human
予測される分子量	70 kDa including tags
領域	467 to 855

特性

Our **Abpromise guarantee** covers the use of **ab96401** in the following tested applications.

The application notes include recommended starting dilutions; optimal dilutions/concentrations should be determined by the end user.

アプリケーション	SDS-PAGE Functional Studies
製品の状態	Liquid

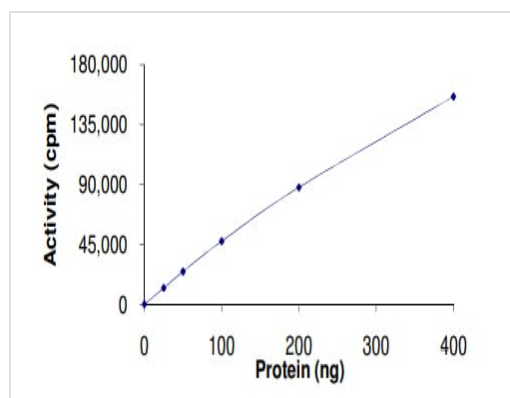
前処理および保存

保存方法および安定性	Shipped on dry ice. Upon delivery aliquot and store at -80°C. Avoid freeze / thaw cycles. pH: 7.50 Constituents: 0.307% Glutathione, 0.00174% PMSF, 0.00385% DTT, 0.79% Tris HCl, 0.00292% EDTA, 25% Glycerol (glycerin, glycerine), 0.87% Sodium chloride This product is an active protein and may elicit a biological response in vivo, handle with caution.
------------	--

関連情報

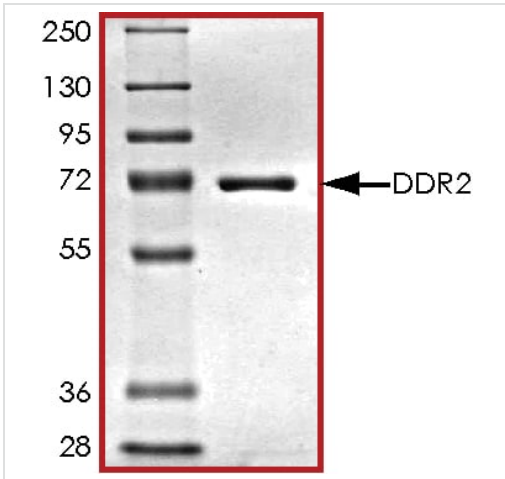
機能	This tyrosine kinase receptor for fibrillar collagen mediates fibroblast migration and proliferation. Contributes to cutaneous wound healing.
組織特異性	The major 10 kDa transcript is expressed in high levels in heart and lung, less in brain, placenta, liver, skeletal muscle, pancreas, and kidney.
関連疾患	Defects in DDR2 are the cause of spondyloepimetaphyseal dysplasia short limb-hand type (SEMD-SL) [MIM:271665]. A bone disease characterized by short-limbed dwarfism, a narrow chest with pectus excavatum, brachydactyly in the hands and feet, a characteristic craniofacial appearance and premature calcifications. The radiological findings are distinctive and comprise short long bones throughout the skeleton with striking epiphyses that are stippled, flattened and fragmented and flared, irregular metaphyses. Platypondyly in the spine with wide intervertebral spaces is observed and some vertebral bodies are pear-shaped with central humps, anterior protrusions and posterior scalloping.
配列類似性	Belongs to the protein kinase superfamily. Tyr protein kinase family. Insulin receptor subfamily. Contains 1 F5/8 type C domain. Contains 1 protein kinase domain.
細胞内局在	Membrane.

画像



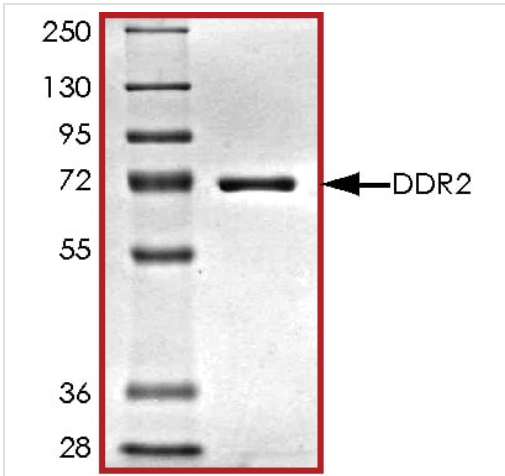
The specific activity of DDR2 (ab96401) was determined to be 41 nmol/min/mg as per activity assay protocol

Functional Studies - Recombinant human DDR2 protein (ab96401) (ab96401)



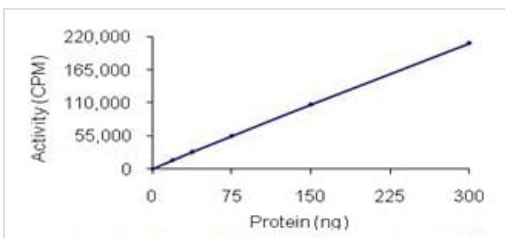
SDS PAGE analysis of ab96401

SDS-PAGE - Recombinant human DDR2 protein
(ab96401) (ab96401)



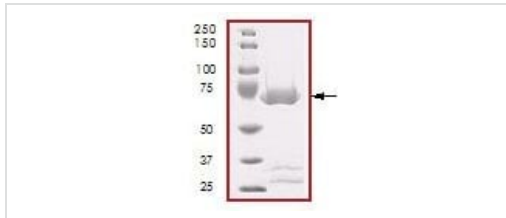
SDS PAGE analysis of ab96401

SDS-PAGE - Recombinant human DDR2 protein
(ab96401) (ab96401)



Kinase Assay demonstrating specific activity of ab96401.

Functional Studies - Recombinant human DDR2
protein (ab96401) (ab96401)



SDS-PAGE - Recombinant human DDR2 protein
(ab96401) (ab96401)

SDS-PAGE showing ab96401 at approximately 70kDa.

Please note: All products are "FOR RESEARCH USE ONLY. NOT FOR USE IN DIAGNOSTIC PROCEDURES"

Our Abpromise to you: Quality guaranteed and expert technical support

- Replacement or refund for products not performing as stated on the datasheet
- Valid for 12 months from date of delivery
- Response to your inquiry within 24 hours
- We provide support in Chinese, English, French, German, Japanese and Spanish
- Extensive multi-media technical resources to help you
- We investigate all quality concerns to ensure our products perform to the highest standards

If the product does not perform as described on this datasheet, we will offer a refund or replacement. For full details of the Abpromise, please visit <https://www.abcam.co.jp/abpromise> or contact our technical team.

Terms and conditions

- Guarantee only valid for products bought direct from Abcam or one of our authorized distributors