

Recombinant Human DCXR protein ab98147

画像数 1

製品の詳細

製品名	Recombinant Human DCXR protein
精製度	> 95 % SDS-PAGE. ab98147 was purified using conventional chromatography techniques.
発現系	Escherichia coli
アクセッション番号	<u>Q7Z4W1</u>
タンパク質長	Full length protein
Animal free	No
由来	Recombinant
生物種	Human
配列	<p>MGSSHHHHHSSGLVPRGSHMELFLAGRRVLVTGAGKGIG RGTVQALHAT GARVVAVSRTQADLSLVRECPGIEPVCVDLGDWEATERALG SVGPVDLL VNNAVALLQPFLEVTKAEFDRSFEVNLRAVIQVSQIVARGL IARGVPGA IVNVSSQCSQRAVTNHSVYCSTKGALDMLTKVMALELGPHKI RVNAVNP VVMTSMGQATWSDPHKAKTMLNRIPLGKFAEVEHVVNAILFL LSDRSGMT TGSTLPVEGGFWAC</p>
予測される分子量	28 kDa including tags
領域	1 to 244
タグ	His tag N-Terminus

特性

Our **Abpromise guarantee** covers the use of **ab98147** in the following tested applications.

The application notes include recommended starting dilutions; optimal dilutions/concentrations should be determined by the end user.

アプリケーション	Mass Spectrometry
	SDS-PAGE
質量分析	MALDI-TOF
製品の状態	Liquid

前処理および保存

保存方法および安定性

Shipped at 4°C. Store at +4°C short term (1-2 weeks). Upon delivery aliquot. Store at -20°C or -80°C. Avoid freeze / thaw cycle.

pH: 8.00

Constituents: 0.0154% DTT, 0.316% Tris HCl, 20% Glycerol (glycerin, glycerine), 0.29% Sodium chloride

関連情報

機能

Catalyzes the NADPH-dependent reduction of several pentoses, tetroses, trioses, alpha-dicarbonyl compounds and L-xylulose. Participates in the uronate cycle of glucose metabolism. May play a role in the water absorption and cellular osmoregulation in the proximal renal tubules by producing xylitol, an osmolyte, thereby preventing osmolytic stress from occurring in the renal tubules.

組織特異性

Highly expressed in kidney, liver and epididymis. In the epididymis, it is mainly expressed in the proximal and distal sections of the corpus region. Weakly or not expressed in brain, lung, heart, spleen and testis.

関連疾患

Note=The enzyme defect in pentosuria has been shown to involve L-xylulose reductase. Essential pentosuria is an inborn error of metabolism characterized by the excessive urinary excretion of the pentose L-xylulose.

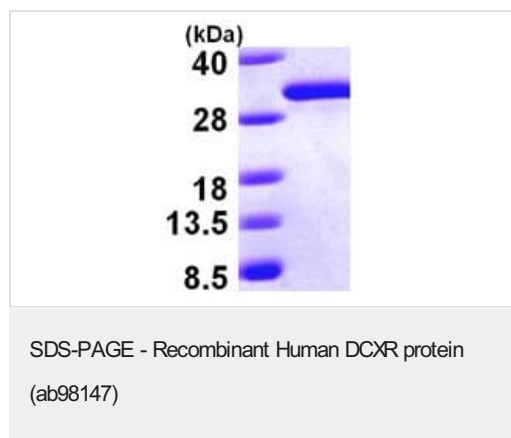
配列類似性

Belongs to the short-chain dehydrogenases/reductases (SDR) family.

細胞内局在

Membrane. Probably recruited to membranes via an interaction with phosphatidylinositol.

画像



15% SDS-PAGE analysis of 3µg ab98147

Please note: All products are "FOR RESEARCH USE ONLY. NOT FOR USE IN DIAGNOSTIC PROCEDURES"

Our Abpromise to you: Quality guaranteed and expert technical support

- Replacement or refund for products not performing as stated on the datasheet
- Valid for 12 months from date of delivery
- Response to your inquiry within 24 hours

- We provide support in Chinese, English, French, German, Japanese and Spanish
- Extensive multi-media technical resources to help you
- We investigate all quality concerns to ensure our products perform to the highest standards

If the product does not perform as described on this datasheet, we will offer a refund or replacement. For full details of the Abpromise, please visit <https://www.abcam.co.jp/abpromise> or contact our technical team.

Terms and conditions

- Guarantee only valid for products bought direct from Abcam or one of our authorized distributors