

Recombinant Human DC-SIGNR protein (Fc Chimera) ab83920

画像数 3

製品の詳細

製品名	Recombinant Human DC-SIGNR protein (Fc Chimera)
精製度	> 95 % SDS-PAGE.
発現系	HEK 293 cells
アクセッション番号	<u><b>Q9H2X3</b></u>
タンパク質長	Protein fragment
Animal free	No
由来	Recombinant
生物種	Human
配列	

Theoretical Sequence:  
HGTELPSPPSKLQVSKVPSSLSQEQSEQDAIYQNLTLKAAV  
GELSEK  
SKLQEIIYQELTQLKAAVGELPEKSKLQEIIYQELTRLKAAVGE  
LPEKSKLQ  
EIIYQELTRLKAAVGELPEKSKLQEIIYQELTRLKAAVGELPEK  
SKLQEIIYQ  
ELTELKAAVGELPEKSKLQEIIYQELTQLKAAVGELPDQSKQQ  
QIIYQELTD  
LKTAFERLCRHCPKDWTFQGNCFMSNSQRNWHDSVTACQE  
VRAQLVVI  
KTAEEQNFLQLQTSRSNRFWMGLSDLNQEGTWQWVDGSPLS  
PSFQRYWN  
SGEPNNSGNEDCAEFSGSGWNDNRCDVDNYWICKKPAACFRD  
GIPKVDKK  
VEPKSCDKTHTCPPCPAPELLGGPSVFLFPPKPKDTLMISRT  
PEVTCVVV  
DVSHEDPEVKFNWYVDGVEVHNAKTKPREEQYNSTYRVVSVL  
TVLHQDWL  
NGKEYKCRVSNKALPAPIEKTISKAKGQPREPQVYTLPPSRD  
ELTKNQVS  
LTCLVKGFYPSDIAVEWESNGQPENNYKTTTPVLDSDGSFFL  
YSKLTVDK SRWQQGNVFSCSVMHEALHNHYTQKSLSLSPGK

配列の追加情報 Fused with the Fc region of Human IgG1 at the C-terminus.

## 特性

---

Our **Abpromise guarantee** covers the use of **ab83920** in the following tested applications.

The application notes include recommended starting dilutions; optimal dilutions/concentrations should be determined by the end user.

アプリケーション	SDS-PAGE
製品の状態	Lyophilized

## 前処理および保存

---

保存方法および安定性	Shipped at 4°C. Store at +4°C. Constituents: 10% Trehalose, 1% Human serum albumin
再構成	It is recommended that 0.5 ml of sterile phosphate-buffered saline be added to the vial. Following reconstitution short-term storage at 4°C is recommended, with longer-term storage in aliquots at -18 to -20°C. Repeated freeze thawing is not recommended.

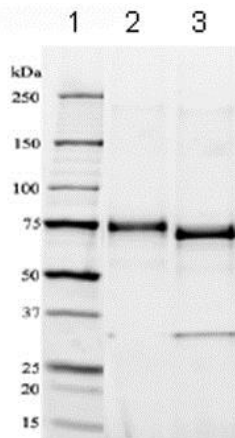
## 関連情報

---

機能	Probable pathogen-recognition receptor involved in peripheral immune surveillance in liver. May mediate the endocytosis of pathogens which are subsequently degraded in lysosomal compartments. Probably recognizes in a calcium-dependent manner high mannose N-linked oligosaccharides in a variety of pathogen antigens, including HIV-1 gp120, HIV-2 gp120, SIV gp120, ebolavirus glycoproteins, HCV E2, and human SARS coronavirus protein S. Is a receptor for ICAM3, probably by binding to mannose-like carbohydrates. Is presumably a coreceptor for the SARS coronavirus.
組織特異性	Predominantly highly expressed in liver sinusoidal endothelial cells and in lymph node. Found in placental endothelium but not in macrophages. Expressed in type II alveolar cells and lung endothelial cells.
配列類似性	Contains 1 C-type lectin domain.
ドメイン	The tandem repeat domain, also called neck domain, mediates oligomerization.
細胞内局在	Secreted and Cell membrane.

## 画像

---



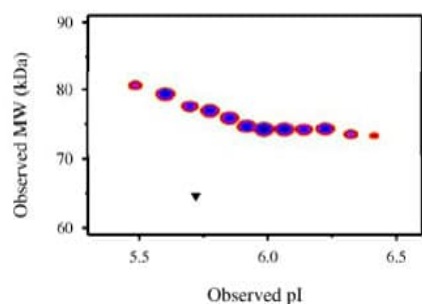
SDS-PAGE - Recombinant Human DC-SIGNR protein (Fc Chimera) (ab83920)

Lane 1 – MW markers; Lane 2 – ab83920; Lane 3 – ab83920 treated with PNGase F to remove potential N-linked glycans. 10 µg protein loaded per lane. Deep Purple stained. Drop in MW after treatment with PNGase F indicates presence of N-linked glycans. Band in lane 3 at 35 kDa is PNGase F protein.



SDS-PAGE - Recombinant Human DC-SIGNR protein (Fc Chimera) (ab83920)

A sample of ab83920 without carrier protein was reduced and alkylated. 40 µg protein was loaded, focused on a 3-10 IPG strip then run on a 4-20% Tris-HCl 2D gel. Spot train (Deep Purple™ stained) indicates presence of multiple glycoforms of ab83920. Spots within the spot train were cut from the gel and identified by protein mass fingerprinting as DC-SIGNR (Fc Chimera).



Functional Studies - Recombinant Human DC-SIGNR protein (Fc Chimera) (ab83920)

Post-translational modifications result in protein heterogeneity. The densitometry scan demonstrates the purified human cell expressed protein exists in multiple glycoforms, which differ according to their level of post-translational modification. The triangle indicates theoretical pI and MW.

**Please note:** All products are "FOR RESEARCH USE ONLY. NOT FOR USE IN DIAGNOSTIC PROCEDURES"

## Our Abpromise to you: Quality guaranteed and expert technical support

- Replacement or refund for products not performing as stated on the datasheet

- Valid for 12 months from date of delivery
- Response to your inquiry within 24 hours
- We provide support in Chinese, English, French, German, Japanese and Spanish
- Extensive multi-media technical resources to help you
- We investigate all quality concerns to ensure our products perform to the highest standards

If the product does not perform as described on this datasheet, we will offer a refund or replacement. For full details of the Abpromise, please visit <https://www.abcam.co.jp/abpromise> or contact our technical team.

#### **Terms and conditions**

---

- Guarantee only valid for products bought direct from Abcam or one of our authorized distributors