

Recombinant Human Cytochrome C protein ab131847

画像数 1

製品の詳細

製品名	Recombinant Human Cytochrome C protein
発現系	Wheat germ
アクセッション番号	P99999
タンパク質長	Full length protein
Animal free	No
由来	Recombinant
生物種	Human
配列	MGDVEKGKKIFIMKCSQCHTVEKGGKHKTGPNLHGLFGRKTG QAPGYSYT AANKNKGIIWGEDTLMEYLENPKKYIPGTKMIFVGIKKKEER ADLIAYLK KATNE
予測される分子量	37 kDa including tags
領域	1 to 105

特性

Our **Abpromise guarantee** covers the use of **ab131847** in the following tested applications.

The application notes include recommended starting dilutions; optimal dilutions/concentrations should be determined by the end user.

アプリケーション	ELISA SDS-PAGE Western blot
製品の状態	Liquid
備考	Protein concentration is above or equal to 0.05 mg/mL.

前処理および保存

保存方法および安定性	Shipped on dry ice. Upon delivery aliquot and store at -80°C. Avoid freeze / thaw cycles. pH: 8.00 Constituents: 0.31% Glutathione, 0.79% Tris HCl
------------	--

Glutathione is reduced.

関連情報

機能

Electron carrier protein. The oxidized form of the cytochrome c heme group can accept an electron from the heme group of the cytochrome c1 subunit of cytochrome reductase. Cytochrome c then transfers this electron to the cytochrome oxidase complex, the final protein carrier in the mitochondrial electron-transport chain.

Plays a role in apoptosis. Suppression of the anti-apoptotic members or activation of the pro-apoptotic members of the Bcl-2 family leads to altered mitochondrial membrane permeability resulting in release of cytochrome c into the cytosol. Binding of cytochrome c to Apaf-1 triggers the activation of caspase-9, which then accelerates apoptosis by activating other caspases.

関連疾患

Defects in CYCS are the cause of thrombocytopenia type 4 (THC4) [MIM:612004]; also known as autosomal dominant thrombocytopenia type 4. Thrombocytopenia is the presence of relatively few platelets in blood. THC4 is a non-syndromic form of thrombocytopenia. Clinical manifestations of thrombocytopenia are absent or mild. THC4 may be caused by dysregulated platelet formation.

配列類似性

Belongs to the cytochrome c family.

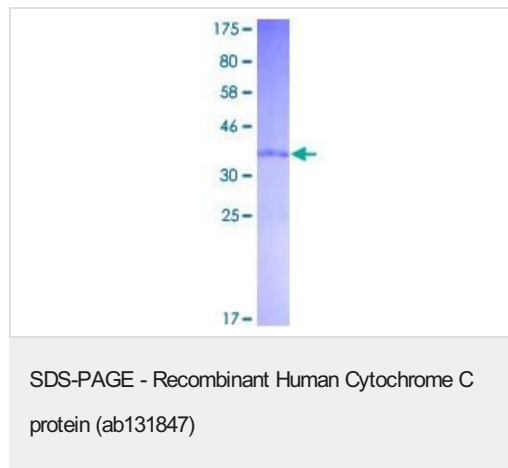
翻訳後修飾

Binds 1 heme group per subunit.

細胞内局在

Mitochondrion matrix.

画像



12.5% SDS-PAGE stained with Coomassie Blue showing ab131847 at approximately 37.29 kDa.

Please note: All products are "FOR RESEARCH USE ONLY. NOT FOR USE IN DIAGNOSTIC PROCEDURES"

Our Abpromise to you: Quality guaranteed and expert technical support

- Replacement or refund for products not performing as stated on the datasheet
- Valid for 12 months from date of delivery
- Response to your inquiry within 24 hours
- We provide support in Chinese, English, French, German, Japanese and Spanish

- Extensive multi-media technical resources to help you
- We investigate all quality concerns to ensure our products perform to the highest standards

If the product does not perform as described on this datasheet, we will offer a refund or replacement. For full details of the Abpromise, please visit <https://www.abcam.co.jp/abpromise> or contact our technical team.

Terms and conditions

- Guarantee only valid for products bought direct from Abcam or one of our authorized distributors