

Recombinant Human CYP1B1 protein ab114353

画像数 1

製品の詳細

製品名	Recombinant Human CYP1B1 protein
発現系	Wheat germ
アクセッション番号	<u>Q16678</u>
タンパク質長	Protein fragment
Animal free	No
由来	Recombinant
生物種	Human
配列	NKDLTSRVMIFSVGKRRRCIGEELSKMQLFLFISILAHQCDFR ANPNEPAK MNFSYGLTIKPKSFKVNVTLRESMELLDSAVQNLQAKETC
予測される分子量	36 kDa including tags
領域	453 to 542

特性

Our **Abpromise guarantee** covers the use of **ab114353** in the following tested applications.
The application notes include recommended starting dilutions; optimal dilutions/concentrations should be determined by the end user.

アプリケーション	ELISA SDS-PAGE Western blot
製品の状態	Liquid

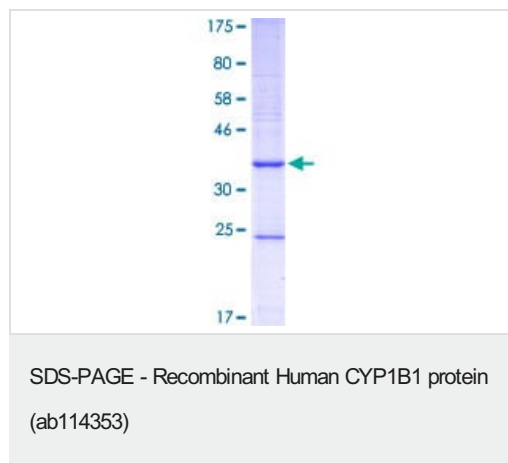
前処理および保存

保存方法および安定性	Shipped on dry ice. Upon delivery aliquot and store at -80°C. Avoid freeze / thaw cycles. pH: 8.00 Constituents: 0.3% Glutathione, 0.79% Tris HCl
------------	---

関連情報

機能	<p>Cytochromes P450 are a group of heme-thiolate monooxygenases. In liver microsomes, this enzyme is involved in an NADPH-dependent electron transport pathway. It oxidizes a variety of structurally unrelated compounds, including steroids, fatty acids, and xenobiotics.</p> <p>Participates in the metabolism of an as-yet-unknown biologically active molecule that is a participant in eye development.</p>
組織特異性	Expressed in many tissues.
関連疾患	<p>Defects in CYP1B1 are the cause of primary congenital glaucoma type 3A (GLC3A) [MIM:231300]. GLC3A is an autosomal recessive form of primary congenital glaucoma (PCG). PCG is characterized by marked increase of intraocular pressure at birth or early childhood, large ocular globes (buphthalmos) and corneal edema. It results from developmental defects of the trabecular meshwork and anterior chamber angle of the eye that prevent adequate drainage of aqueous humor.</p> <p>Defects in CYP1B1 are a cause of primary open angle glaucoma (POAG) [MIM:137760]. POAG is a complex and genetically heterogeneous ocular disorder characterized by a specific pattern of optic nerve and visual field defects. The angle of the anterior chamber of the eye is open, and usually the intraocular pressure is increased. The disease is asymptomatic until the late stages, by which time significant and irreversible optic nerve damage has already taken place. In some cases, POAG shows digenic inheritance involving mutations in CYP1B1 and MYOC genes.</p> <p>Defects in CYP1B1 are a cause of Peters anomaly (PAN) [MIM:604229]. Peters anomaly is a congenital defect of the anterior chamber of the eye.</p>
配列類似性	Belongs to the cytochrome P450 family.
細胞内局在	Endoplasmic reticulum membrane. Microsome membrane.

画像



ab114353 analysed on a 12.5% SDS-PAGE gel stained with Coomassie Blue.

Please note: All products are "FOR RESEARCH USE ONLY. NOT FOR USE IN DIAGNOSTIC PROCEDURES"

Our Abpromise to you: Quality guaranteed and expert technical support

- Replacement or refund for products not performing as stated on the datasheet
- Valid for 12 months from date of delivery
- Response to your inquiry within 24 hours
- We provide support in Chinese, English, French, German, Japanese and Spanish

- Extensive multi-media technical resources to help you
- We investigate all quality concerns to ensure our products perform to the highest standards

If the product does not perform as described on this datasheet, we will offer a refund or replacement. For full details of the Abpromise, please visit <https://www.abcam.co.jp/abpromise> or contact our technical team.

Terms and conditions

- Guarantee only valid for products bought direct from Abcam or one of our authorized distributors