

# Recombinant human Cyclophilin A protein (Active) ab86219

7 References [画像数 1](#)

### 製品の詳細

<b>製品名</b>	Recombinant human Cyclophilin A protein (Active)
<b>生理活性</b>	Specific activity is >650 nmoles/min/mg, and is defined as the amount of enzyme that cleaves 1 nmole of suc-AAPF-pNA per minute at 37°C in Tris-Hcl pH8.0 using chymotrypsin.  <b>Activity Assay</b> Prepare 180µl assay buffer into a suitable container: Test is 120µl of 200mM Tris-HCl pH8.0, 50µl of 20nM chymotrypsin and 10µl of 100µg/ml Cyclophilin A protein. Blank is 130µl of 200mM Tris-HCl pH8.0 and 50µl of 20nM chymotrypsin. Equilibrate to 37°C and monitor the A405nm until value is constant using a spectrophotometer. Load 20µl of 5mM Suc-AAPF-pNA into plate. (460mM Lithium chloride, 3mM 2,2,2-Trifluoroethanol in DW. The suc-AAPF-pNA is first dissolved in DMSO and diluted once in 200 mM Tris-HCl (pH8.0). Finally, manufacture the final 5mM with 460mM Lithium chloride, 3mM 2,2,2-Trifluoroethanol). Add 180µl of assay buffer in 5mM Suc-AAPF-pNA. Record the absorbance A405nm for 40 minutes at 37 °C.
<b>精製度</b>	> 95 % SDS-PAGE. Purified by using conventional chromatography techniques.
<b>エンドキシン・レベル</b>	< 1.000 Eu/µg
<b>発現系</b>	Escherichia coli
<b>アクセッション番号</b>	<b><u>P62937</u></b>
<b>タンパク質長</b>	Full length protein
<b>Animal free</b>	No
<b>由来</b>	Recombinant
<b>生物種</b>	Human
<b>配列</b>	MGSSHHHHHH SSGLVPRGSH MVNPTVFFDI AVDGEPLGRV SFELFADKVP KTAENFRALS TGEKGFYKYG SCFHRIIPGF MCQGGDFTRH NGTGGKSIYG EKFEDEFIL KHTGPGILSM ANAGPNTNGS QFFICTAKTE WLDGKHVVFG KVKEGMNIVE AMERFGSRNG KTSKKITIAD CGQLE
<b>予測される分子量</b>	20 kDa including tags

実際の分子量	20 kDa including tags
領域	1 to 165
タグ	His tag N-Terminus
配列の追加情報	(NP_066953)

## 特性

---

Our **Abpromise guarantee** covers the use of **ab86219** in the following tested applications.

The application notes include recommended starting dilutions; optimal dilutions/concentrations should be determined by the end user.

アプリケーション	Functional Studies SDS-PAGE
質量分析	MALDI-TOF
製品の状態	Liquid
備考	MW confirmed by MALDI-TOF. Concentration determined by Bradford assay. Endotoxin levels determined by LAL method.

## 前処理および保存

---

保存方法および安定性	Shipped at 4°C. Store at +4°C short term (1-2 weeks). Upon delivery aliquot. Store at -20°C or -80°C. Avoid freeze / thaw cycle. pH: 8.00 Constituents: 0.116% Sodium chloride, 10% Glycerol, 0.242% Tris, 0.0077% DTT This product is an active protein and may elicit a biological response in vivo, handle with caution.
------------	--

## 関連情報

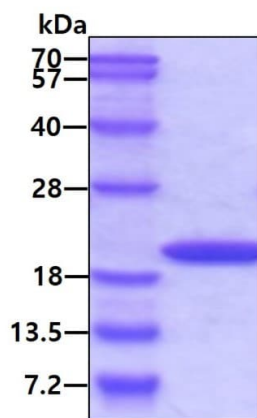
---

機能	PPases accelerate the folding of proteins. It catalyzes the cis-trans isomerization of proline imidic peptide bonds in oligopeptides.
配列類似性	Belongs to the cyclophilin-type PPase family. PPase A subfamily. Contains 1 PPase cyclophilin-type domain.
細胞内局在	Cytoplasm.

---

## 画像

---



SDS-PAGE - Recombinant human Cyclophilin A protein (Active) (ab86219)

3ug by SDS-PAGE under reducing conditions and visualized by coomassie blue stain.

**Please note:** All products are "FOR RESEARCH USE ONLY. NOT FOR USE IN DIAGNOSTIC PROCEDURES"

### Our Abpromise to you: Quality guaranteed and expert technical support

---

- Replacement or refund for products not performing as stated on the datasheet
- Valid for 12 months from date of delivery
- Response to your inquiry within 24 hours
- We provide support in Chinese, English, French, German, Japanese and Spanish
- Extensive multi-media technical resources to help you
- We investigate all quality concerns to ensure our products perform to the highest standards

If the product does not perform as described on this datasheet, we will offer a refund or replacement. For full details of the Abpromise, please visit <https://www.abcam.co.jp/abpromise> or contact our technical team.

### Terms and conditions

---

- Guarantee only valid for products bought direct from Abcam or one of our authorized distributors