

Recombinant Human Cyclin E1 protein ab119719

画像数 1

製品の詳細

| | |
|-------------|---|
| 製品名 | Recombinant Human Cyclin E1 protein |
| 精製度 | > 90 % SDS-PAGE. Purity tested by densitometry. Affinity purified. |
| 発現系 | Baculovirus infected Sf9 cells |
| アクセッション番号 | <u>P24864</u> |
| タンパク質長 | Full length protein |
| Animal free | No |
| 由来 | Recombinant |
| 生物種 | Human |
| 予測される分子量 | 73 kDa including tags |
| 領域 | 1 to 410 |

特性

Our **Abpromise guarantee** covers the use of **ab119719** in the following tested applications.

The application notes include recommended starting dilutions; optimal dilutions/concentrations should be determined by the end user.

| | |
|----------|--------------------------|
| アプリケーション | Western blot SDS-PAGE |
| 製品の状態 | Liquid |

前処理および保存

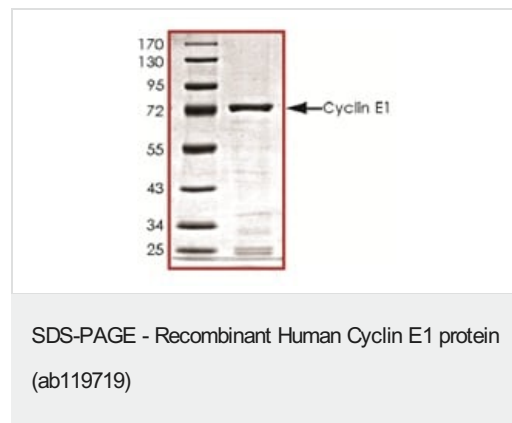
| | |
|------------|---|
| 保存方法および安定性 | Shipped on dry ice. Upon delivery aliquot and store at -80°C. Avoid freeze / thaw cycles. pH: 7.50 Constituents: 0.31% Glutathione, 0.002% PMSF, 0.003% DTT, 0.79% Tris HCl, 0.003% EDTA, 25% Glycerol (glycerin, glycerine), 0.88% Sodium chloride |
|------------|---|

関連情報

| | |
|----|---|
| 機能 | Essential for the control of the cell cycle at the G1/S (start) transition. |
|----|---|

| | |
|-------|---|
| 組織特異性 | Highly expressed in testis and placenta. Low levels in bronchial epithelial cells. |
| 配列類似性 | Belongs to the cyclin family. Cyclin E subfamily. |
| 翻訳後修飾 | Phosphorylation of Thr-395 by GSK3 and of Ser-399 by CDK2 accelerates degradation via the ubiquitin proteasome pathway. Phosphorylated upon DNA damage, probably by ATM or ATR. |
| 細胞内局在 | Nucleus. |

画像



SDS Page analysis of ab119719

Please note: All products are "FOR RESEARCH USE ONLY. NOT FOR USE IN DIAGNOSTIC PROCEDURES"

Our Abpromise to you: Quality guaranteed and expert technical support

- Replacement or refund for products not performing as stated on the datasheet
- Valid for 12 months from date of delivery
- Response to your inquiry within 24 hours
- We provide support in Chinese, English, French, German, Japanese and Spanish
- Extensive multi-media technical resources to help you
- We investigate all quality concerns to ensure our products perform to the highest standards

If the product does not perform as described on this datasheet, we will offer a refund or replacement. For full details of the Abpromise, please visit <https://www.abcam.co.jp/abpromise> or contact our technical team.

Terms and conditions

- Guarantee only valid for products bought direct from Abcam or one of our authorized distributors