

### Recombinant Human Cyclin D2 protein (denatured) ab116405

画像数 1

#### 製品の詳細

製品名	Recombinant Human Cyclin D2 protein (denatured)
精製度	> 85 % SDS-PAGE.
発現系	Escherichia coli
アクセッション番号	<b>P30279</b>
タンパク質長	Full length protein
Animal free	No
由来	Recombinant
生物種	Human
配列	MGSSHHHHHH SSGLVPRGSH MGSHMELLCH EVDPVRRRAVR DRNLLRDDR LQNLLTIEER YLPQCSYFKC VQKDIQPYMR RMVATWMLEV CEEQKCEEEV FPLAMNYLDR FLAGVPTPKS HLQLLGAVCM FLASKLKETS PLTAEKLCIY TDNSIKPQEL LEWELVVLGK LKWNLAAVTP HDFIEHILRK LPQQRKLSL IRKHAQTFIA LCATDFKFAM YPPSMIATGS VGAAICGLQQ DEEVSSLTCD ALTELLAKIT NTDVDCLKAC QEQIEAVLLN SLQQYRQDQR DGSKSEDELD QASTPTDVRD IDL
予測される分子量	36 kDa including tags
領域	1 to 289
タグ	His tag N-Terminus
製品の詳細	Recombinant Human Cyclin D2 protein

#### 特性

Our **Abpromise guarantee** covers the use of **ab116405** in the following tested applications.

The application notes include recommended starting dilutions; optimal dilutions/concentrations should be determined by the end user.

アプリケーション	SDS-PAGE
製品の状態	Liquid

## 前処理および保存

### 保存方法および安定性

Shipped at 4°C. Store at +4°C short term (1-2 weeks). Upon delivery aliquot. Store at -20°C or -80°C. Avoid freeze / thaw cycle.

pH: 8.00

Constituents: 6% Urea, 0.03% DTT, 83% Tris HCl, 10% Glycerol (glycerin, glycerine)

## 関連情報

### 機能

Regulatory component of the cyclin D2-CDK4 (DC) complex that phosphorylates and inhibits members of the retinoblastoma (RB) protein family including RB1 and regulates the cell-cycle during G(1)/S transition. Phosphorylation of RB1 allows dissociation of the transcription factor E2F from the RB/E2F complex and the subsequent transcription of E2F target genes which are responsible for the progression through the G(1) phase. Hypophosphorylates RB1 in early G(1) phase. Cyclin D-CDK4 complexes are major integrators of various mitogenic and antimitogenic signals. Also substrate for SMAD3, phosphorylating SMAD3 in a cell-cycle-dependent manner and repressing its transcriptional activity. Component of the ternary complex, cyclin D2/CDK4/CDKN1B, required for nuclear translocation and activity of the cyclin D-CDK4 complex.

### 配列類似性

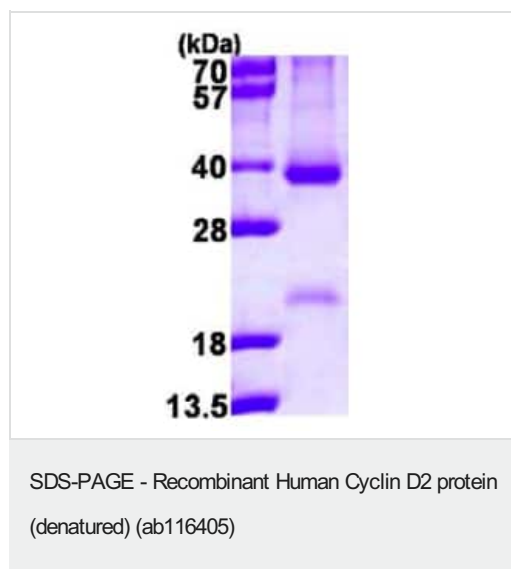
Belongs to the cyclin family. Cyclin D subfamily.

Contains 1 cyclin N-terminal domain.

### 細胞内局在

Nucleus. Cytoplasm. Membrane. Cyclin D-CDK4 complexes accumulate at the nuclear membrane and are then translocated into the nucleus through interaction with KIP/CIP family members.

## 画像



3ug Cyclin D2 protein. 15% SDS-PAGE

**Please note:** All products are "FOR RESEARCH USE ONLY. NOT FOR USE IN DIAGNOSTIC PROCEDURES"

### **Our Abpromise to you: Quality guaranteed and expert technical support**

---

- Replacement or refund for products not performing as stated on the datasheet
- Valid for 12 months from date of delivery
- Response to your inquiry within 24 hours
  
- We provide support in Chinese, English, French, German, Japanese and Spanish
- Extensive multi-media technical resources to help you
- We investigate all quality concerns to ensure our products perform to the highest standards

If the product does not perform as described on this datasheet, we will offer a refund or replacement. For full details of the Abpromise, please visit <https://www.abcam.co.jp/abpromise> or contact our technical team.

### **Terms and conditions**

---

- Guarantee only valid for products bought direct from Abcam or one of our authorized distributors