

### Recombinant human CXCL14 protein ab50043

画像数 1

#### 製品の詳細

製品名	Recombinant human CXCL14 protein
生理活性	Biological Activity : Determined by it's ability to chemoattract activated monocytes using a concentration range of 1.0-10.0 ng/ml.
精製度	> 98 % SDS-PAGE. Greater than 98% by HPLC analyses. Endotoxin level is less than 0.1 ng per g (1EU/g).
発現系	Escherichia coli
タンパク質長	Full length protein
Animal free	No
由来	Recombinant
生物種	Human
配列	SKCKCSRKGP KIRYSDVKKL EMKPKYPHCE EKMVIITTKS VSRYRGQEHK LHPKLQSTKR FIKWYNWNE KRRVYEE

#### 特性

Our **Abpromise guarantee** covers the use of **ab50043** in the following tested applications.

The application notes include recommended starting dilutions; optimal dilutions/concentrations should be determined by the end user.

アプリケーション	Western blot SDS-PAGE Functional Studies
製品の状態	Lyophilized

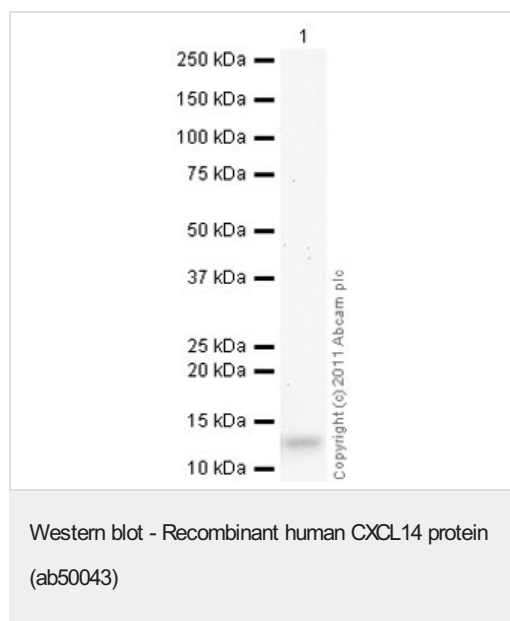
#### 前処理および保存

保存方法および安定性	Shipped at 4°C. The lyophilized protein is stable for a few weeks at room temperature. Store at -20°C long term.  This product is an active protein and may elicit a biological response in vivo, handle with caution.
再構成	For lot specific reconstitution information please contact our Scientific Support Team.

## 関連情報

機能	Potent chemoattractant for neutrophils, and weaker for dendritic cells. Not chemotactive for T-cells, B-cells, monocytes, natural killer cells or granulocytes. Does not inhibit proliferation of myeloid progenitors in colony formation assays.
組織特異性	Expressed in heart, brain, placenta, lung, liver, skeletal muscle, kidney and pancreas. Highly expressed in normal tissue without inflammatory stimuli and infrequently expressed in cancer cell lines. Weakly expressed in monocyte-derived dendritic cells. Not detected in lung or unstimulated peripheral blood lymphocytes.
配列類似性	Belongs to the intercrine alpha (chemokine CxC) family.
細胞内局在	Secreted.

## 画像



Anti-CXCL14 antibody (**ab36622**) at 1 µg/ml + Recombinant human CXCL14 protein (ab50043) at 0.1 µg

### Secondary

Goat Anti-Rabbit IgG H&L (HRP) preadsorbed (**ab97080**) at 1/5000 dilution

Developed using the ECL technique.

Performed under reducing conditions.

**Exposure time:** 12 minutes

**Please note:** All products are "FOR RESEARCH USE ONLY. NOT FOR USE IN DIAGNOSTIC PROCEDURES"

## Our Abpromise to you: Quality guaranteed and expert technical support

- Replacement or refund for products not performing as stated on the datasheet
- Valid for 12 months from date of delivery
- Response to your inquiry within 24 hours
- We provide support in Chinese, English, French, German, Japanese and Spanish
- Extensive multi-media technical resources to help you
- We investigate all quality concerns to ensure our products perform to the highest standards

If the product does not perform as described on this datasheet, we will offer a refund or replacement. For full details of the Abpromise, please visit <https://www.abcam.co.jp/abpromise> or contact our technical team.

## Terms and conditions

---

- Guarantee only valid for products bought direct from Abcam or one of our authorized distributors