

Recombinant human CSF-1-R protein ab56259

画像数 3

製品の詳細

製品名	Recombinant human CSF-1-R protein
生理活性	Specific activity 21 nmol/min/mg.
精製度	> 85 % Densitometry. Affinity purified.
発現系	Insect cells
タンパク質長	Protein fragment
Animal free	No
由来	Recombinant
生物種	Human
領域	539 to 972

特性

Our **Abpromise guarantee** covers the use of **ab56259** in the following tested applications.

The application notes include recommended starting dilutions; optimal dilutions/concentrations should be determined by the end user.

アプリケーション	Functional Studies SDS-PAGE
製品の状態	Liquid
備考	ab204877 (Poly (4:1 Glu, Tyr) peptide) can be utilized as a substrate for assessing kinase activity

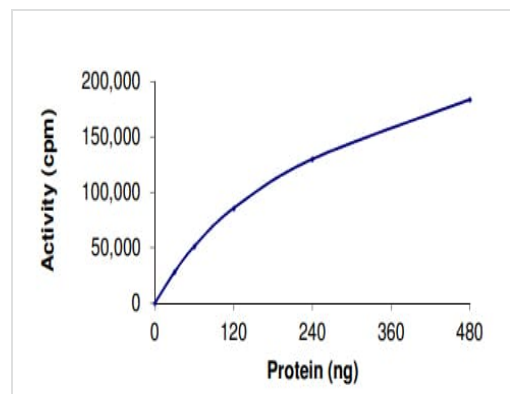
前処理および保存

保存方法および安定性	Shipped on dry ice. Upon delivery aliquot and store at -80°C. Avoid freeze / thaw cycles. pH: 7.50 Constituents: 0.0038% EGTA, 0.00174% PMSF, 0.00385% DTT, 0.79% Tris HCl, 0.00292% EDTA, 25% Glycerol (glycerin, glycerine), 0.87% Sodium chloride This product is an active protein and may elicit a biological response in vivo, handle with caution.
------------	--

関連情報

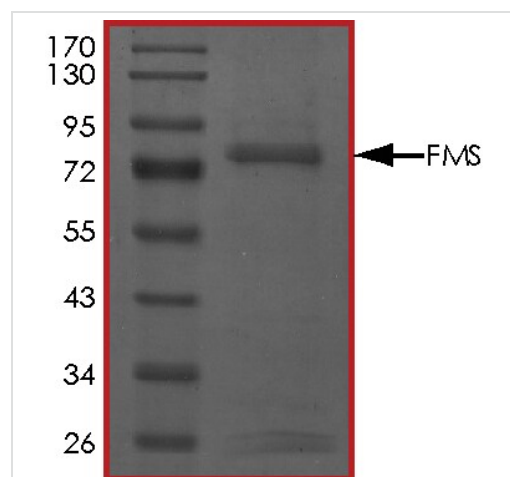
機能	Protein tyrosine-kinase transmembrane receptor for CSF1 and IL34.
組織特異性	Expressed in bone marrow and in differentiated blood mononuclear cells.
配列類似性	<p>Belongs to the protein kinase superfamily. Tyr protein kinase family. CSF-1/PDGF receptor subfamily.</p> <p>Contains 5 Ig-like C2-type (immunoglobulin-like) domains.</p> <p>Contains 1 protein kinase domain.</p>
細胞内局在	Membrane.

画像



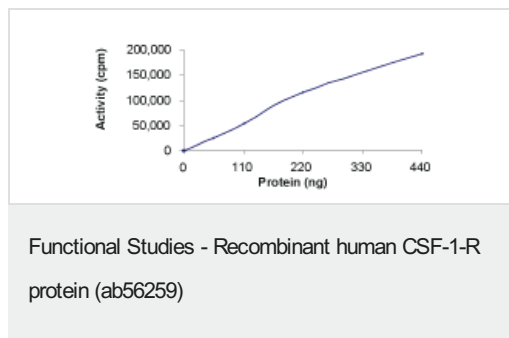
Functional Studies - Recombinant human CSF-1-R protein (ab56259)

The specific activity of CSF-1-R (ab56259) was determined to be 24 nmol/min/mg as per activity assay protocol



SDS-PAGE - Recombinant human CSF-1-R protein (ab56259)

SDS-PAGE analysis of ab56259.



Specific activity 21nmol/min/mg.

Please note: All products are "FOR RESEARCH USE ONLY. NOT FOR USE IN DIAGNOSTIC PROCEDURES"

Our Abpromise to you: Quality guaranteed and expert technical support

- Replacement or refund for products not performing as stated on the datasheet
- Valid for 12 months from date of delivery
- Response to your inquiry within 24 hours
- We provide support in Chinese, English, French, German, Japanese and Spanish
- Extensive multi-media technical resources to help you
- We investigate all quality concerns to ensure our products perform to the highest standards

If the product does not perform as described on this datasheet, we will offer a refund or replacement. For full details of the Abpromise, please visit <https://www.abcam.co.jp/abpromise> or contact our technical team.

Terms and conditions

- Guarantee only valid for products bought direct from Abcam or one of our authorized distributors