

# Recombinant Human Crk p38 protein ab101046

画像数 1

### 製品の詳細

製品名	Recombinant Human Crk p38 protein
精製度	> 95 % SDS-PAGE. ab101046 was purified by using conventional chromatography.
発現系	Escherichia coli
アクセッション番号	<b><u>P46108</u></b>
タンパク質長	Full length protein
Animal free	No
由来	Recombinant
生物種	Human
配列	MGSSHHHHHHSSGLVPRGSHMAGNFDSEERSSWYWGRLSRQE AVALLQGQ RHGVFLVRDSSTSPGDYVLSVSENSRVSHYIINSSGPRPPVP PSPAQPPP GVSPSRLRIGDQEFDSL PALLEFYKIH YLDTTTLIEPVSRSR QGSGVILR QEEAEYVRAL FDFNGNDEEDLPFKKGDILRIRDKPEEQWNA EDSEGKRG MIPVPYVEKYRPASASVSALIGGR
予測される分子量	25 kDa
領域	1 to 224
タグ	His tag N-Terminus

### 特性

Our **Abpromise guarantee** covers the use of **ab101046** in the following tested applications.

The application notes include recommended starting dilutions; optimal dilutions/concentrations should be determined by the end user.

アプリケーション	Mass Spectrometry
	SDS-PAGE
質量分析	MALDI-TOF
製品の状態	Liquid

### 前処理および保存

## 保存方法および安定性

Shipped at 4°C. Store at +4°C short term (1-2 weeks). Upon delivery aliquot. Store at -20°C or -80°C. Avoid freeze / thaw cycle.

pH: 8.00

Constituents: 0.316% Tris HCl, 10% Glycerol (glycerin, glycerine)

## 関連情報

### 機能

The Crk-I and Crk-II forms differ in their biological activities. Crk-II has less transforming activity than Crk-I. Crk-II mediates attachment-induced MAPK8 activation, membrane ruffling and cell motility in a Rac-dependent manner. Involved in phagocytosis of apoptotic cells and cell motility via its interaction with DOCK1 and DOCK4.

### 配列類似性

Belongs to the CRK family.

Contains 1 SH2 domain.

Contains 2 SH3 domains.

### ドメイン

The C-terminal SH3 domain function as a negative modulator for transformation and the N-terminal SH3 domain appears to function as a positive regulator for transformation.

The SH2 domain mediates interaction with SHB.

### 翻訳後修飾

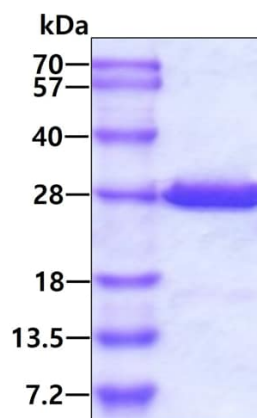
Phosphorylation of Crk-II (40 kDa) gives rise to a 42 kDa form.

Phosphorylated on Tyr-221 upon cell adhesion. Results in the negative regulation of the association with SH2- and SH3-binding partners, possibly by the formation of an intramolecular interaction of phosphorylated Tyr-221 with the SH2 domain. This leads finally to the down-regulation of the Crk signaling pathway.

### 細胞内局在

Cytoplasm. Cell membrane. Translocated to the plasma membrane upon cell adhesion.

## 画像



SDS-PAGE - Recombinant Human Crk p38 protein  
(ab101046)

**Please note:** All products are "FOR RESEARCH USE ONLY. NOT FOR USE IN DIAGNOSTIC PROCEDURES"

### **Our Abpromise to you: Quality guaranteed and expert technical support**

---

- Replacement or refund for products not performing as stated on the datasheet
- Valid for 12 months from date of delivery
- Response to your inquiry within 24 hours
  
- We provide support in Chinese, English, French, German, Japanese and Spanish
- Extensive multi-media technical resources to help you
- We investigate all quality concerns to ensure our products perform to the highest standards

If the product does not perform as described on this datasheet, we will offer a refund or replacement. For full details of the Abpromise, please visit <https://www.abcam.co.jp/abpromise> or contact our technical team.

### **Terms and conditions**

---

- Guarantee only valid for products bought direct from Abcam or one of our authorized distributors