

Product datasheet

Recombinant Human COTL1 protein ab116193

画像数 1

製品の詳細

製品名	Recombinant Human COTL1 protein
精製度	> 90 % SDS-PAGE. ab116193 was purified using conventional chromatography techniques.
発現系	Escherichia coli
アクセッション番号	Q14019
タンパク質長	Full length protein
Animal free	No
由来	Recombinant
生物種	Human
配列	MGSSHHHHH SSGLVPRGSH MATKIDKEAC RAAYNLVRDD GSAVIWVTFK YDGSTIVPGE QGAEQHFHQ QCTDDVRLFA FVRFTTG DAMSKRSKFALIT WIGENVSLQ RAKTGTDKTL VKEVVQNFAK EFVISDRKEL EEDFIKSELK KAGGANYDAQ TE
予測される分子量	18 kDa including tags
領域	1 to 142
タグ	His tag N-Terminus

特性

Our **Abpromise guarantee** covers the use of **ab116193** in the following tested applications.

The application notes include recommended starting dilutions; optimal dilutions/concentrations should be determined by the end user.

アプリケーション	SDS-PAGE Mass Spectrometry
質量分析	MALDI-TOF
製品の状態	Liquid

前処理および保存

保存方法および安定性	Shipped at 4°C. Store at +4°C short term (1-2 weeks). Upon delivery aliquot. Store at -20°C or -80°C. Avoid freeze / thaw cycle.
------------	----------------------------------------------------------------------------------------------------------------------------------

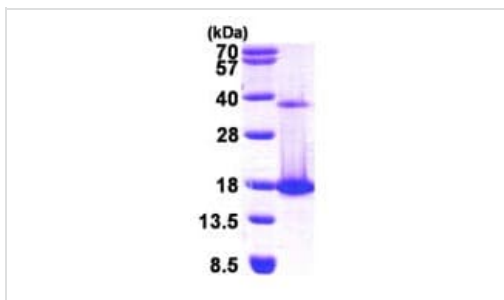
pH: 8.00

Constituents: 0.02% DTT, 0.32% Tris HCl, 10% Glycerol (glycerin, glycerine), 0.58% Sodium chloride

関連情報

機能	Binds to F-actin in a calcium-independent manner. Has no direct effect on actin depolymerization.
組織特異性	Widely expressed with highest levels in placenta, lung, kidney and peripheral blood leukocytes and lower levels in brain, liver and pancreas.
配列類似性	Belongs to the actin-binding proteins ADF family. Coactosin subfamily. Contains 1 ADF-H domain.
細胞内局在	Cytoplasm > cytoskeleton.

画像



15% SDS-PAGE showing ab116193 at approximately 18.1kDa (3µg).

SDS-PAGE - Recombinant Human COTL1 protein (ab116193)

Please note: All products are "FOR RESEARCH USE ONLY. NOT FOR USE IN DIAGNOSTIC PROCEDURES"

Our Abpromise to you: Quality guaranteed and expert technical support

- Replacement or refund for products not performing as stated on the datasheet
- Valid for 12 months from date of delivery
- Response to your inquiry within 24 hours
- We provide support in Chinese, English, French, German, Japanese and Spanish
- Extensive multi-media technical resources to help you
- We investigate all quality concerns to ensure our products perform to the highest standards

If the product does not perform as described on this datasheet, we will offer a refund or replacement. For full details of the Abpromise, please visit <https://www.abcam.co.jp/abpromise> or contact our technical team.

Terms and conditions

- Guarantee only valid for products bought direct from Abcam or one of our authorized distributors