

# Recombinant Human COPZ1 protein ab107148

画像数 1

### 製品の詳細

|             |                                                                                                                                                                                                                                 |
|-------------|---------------------------------------------------------------------------------------------------------------------------------------------------------------------------------------------------------------------------------|
| 製品名         | Recombinant Human COPZ1 protein                                                                                                                                                                                                 |
| 精製度         | > 95 % SDS-PAGE.<br>ab107148 is purified using conventional chromatography techniques.                                                                                                                                          |
| 発現系         | Escherichia coli                                                                                                                                                                                                                |
| アクセッション番号   | <b><u>P61923</u></b>                                                                                                                                                                                                            |
| タンパク質長      | Full length protein                                                                                                                                                                                                             |
| Animal free | No                                                                                                                                                                                                                              |
| 由来          | Recombinant                                                                                                                                                                                                                     |
| 生物種         | Human                                                                                                                                                                                                                           |
| 配列          | MGSSHHHHHHSSGLVPRGSHMEALILEPSLYTVKAILILDND<br>GDRLFAKY<br>YDDTYPVKEQKAFEKNIFNKTHRTDSEIALLEGLTVVYKSS<br>IDLIFYVI<br>GSSYENELMLMAVLNCLFDSLSQLRKNVEKRALLENMEGLF<br>LAVDEIVD<br>GGVILESDPQQVVHRVALRGEDVPLTEQTVSQVLQSAKEQIK<br>WSLLR |
| 予測される分子量    | 22 kDa including tags                                                                                                                                                                                                           |
| 領域          | 1 to 177                                                                                                                                                                                                                        |
| タグ          | His tag N-Terminus                                                                                                                                                                                                              |

### 特性

Our **Abpromise guarantee** covers the use of **ab107148** in the following tested applications.

The application notes include recommended starting dilutions; optimal dilutions/concentrations should be determined by the end user.

|          |                   |
|----------|-------------------|
| アプリケーション | SDS-PAGE          |
|          | Mass Spectrometry |
| 質量分析     | MALDI-TOF         |
| 製品の状態    | Liquid            |

### 前処理および保存

## 保存方法および安定性

Shipped at 4°C. Store at +4°C short term (1-2 weeks). Upon delivery aliquot. Store at -20°C or -80°C. Avoid freeze / thaw cycle.

pH: 8.00

Constituents: 0.0154% DTT, 0.316% Tris HCl, 10% Glycerol (glycerin, glycerine), 0.58% Sodium chloride

## 関連情報

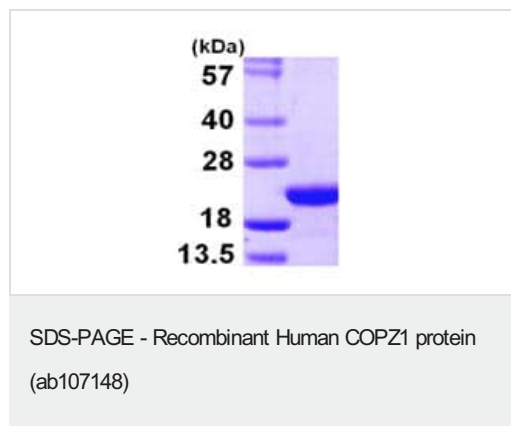
### 関連性

The coatomer is a cytosolic protein complex that binds to dilysine motifs and reversibly associates with Golgi non-clathrin-coated vesicles, which further mediate biosynthetic protein transport from the ER, via the Golgi up to the trans Golgi network. Coatomer complex is required for budding from Golgi membranes, and is essential for the retrograde Golgi-to-ER transport of dilysine-tagged proteins. In mammals, the coatomer can only be recruited by membranes associated to ADP-ribosylation factors (ARFs), which are small GTP-binding proteins; the complex also influences the Golgi structural integrity, as well as the processing, activity, and endocytic recycling of LDL receptors.

### 細胞内局在

Cytoplasm. Golgi apparatus membrane; Peripheral membrane protein; Cytoplasmic side. Cytoplasmic vesicle; COPI-coated vesicle membrane; Peripheral membrane protein; Cytoplasmic side.

## 画像



15% SDS-PAGE showing ab107148 (3μg).

**Please note:** All products are "FOR RESEARCH USE ONLY. NOT FOR USE IN DIAGNOSTIC PROCEDURES"

## Our Abpromise to you: Quality guaranteed and expert technical support

- Replacement or refund for products not performing as stated on the datasheet
- Valid for 12 months from date of delivery
- Response to your inquiry within 24 hours
- We provide support in Chinese, English, French, German, Japanese and Spanish
- Extensive multi-media technical resources to help you
- We investigate all quality concerns to ensure our products perform to the highest standards

If the product does not perform as described on this datasheet, we will offer a refund or replacement. For full details of the Abpromise, please visit <https://www.abcam.co.jp/abpromise> or contact our technical team.

#### **Terms and conditions**

---

- Guarantee only valid for products bought direct from Abcam or one of our authorized distributors