

Recombinant Human Cofilin protein ab62958

1 References [画像数 2](#)

製品の詳細

製品名	Recombinant Human Cofilin protein
精製度	> 95 % SDS-PAGE. purified by using conventional chromatography techniques
発現系	Escherichia coli
タンパク質長	Full length protein
Animal free	No
由来	Recombinant
生物種	Human
配列	<p>MGSSHHHHHH SSGLVPRGSH MASGVAVSDG</p> <p>VIKVFNDMKV RKSSTPEEVK KRKKAVLFCL</p> <p>SEDKKNIILE EGKEILVGDV GQTVDDPYAT</p> <p>FVKMLPKDC RYALYDATYE TKESKKEDLV</p> <p>FIFWAPESAP LSKSMIYASS KDAIKKKLTG</p> <p>IKHELQANCY EEVKDRCTLA EKLGGSAVIS LEGKPL</p>

特性

Our **Abpromise guarantee** covers the use of **ab62958** in the following tested applications.

The application notes include recommended starting dilutions; optimal dilutions/concentrations should be determined by the end user.

アプリケーション	SDS-PAGE
	Western blot

製品の状態	Liquid
-------	--------

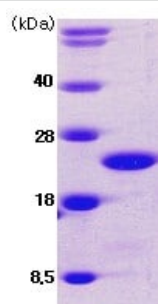
前処理および保存

保存方法および安定性	Shipped at 4°C. Upon delivery aliquot and store at -20°C. Avoid freeze / thaw cycles. pH: 8.00 Constituents: 0.242% Tris, 10% Glycerol (glycerin, glycerine)
------------	--

関連情報

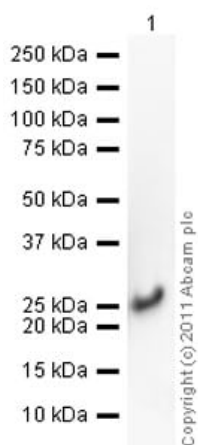
機能	Controls reversibly actin polymerization and depolymerization in a pH-sensitive manner. It has the ability to bind G- and F-actin in a 1:1 ratio of cofilin to actin. It is the major component of intranuclear and cytoplasmic actin rods.
組織特異性	Widely distributed in various tissues.
配列類似性	Belongs to the actin-binding proteins ADF family. Contains 1 ADF-H domain.
翻訳後修飾	Phosphorylated on Ser-3 in resting cells.
細胞内局在	Nucleus matrix. Cytoplasm > cytoskeleton. Almost completely in nucleus in cells exposed to heat shock or 10% dimethyl sulfoxide.

画像



SDS Page analysis of ab62958 (3ug, 15% gel).

SDS-PAGE - Recombinant Human Cofilin protein
(ab62958)



Western blot - Recombinant Human Cofilin protein
(ab62958)

Please note: All products are "FOR RESEARCH USE ONLY. NOT FOR USE IN DIAGNOSTIC PROCEDURES"

Our Abpromise to you: Quality guaranteed and expert technical support

- Replacement or refund for products not performing as stated on the datasheet
- Valid for 12 months from date of delivery
- Response to your inquiry within 24 hours
- We provide support in Chinese, English, French, German, Japanese and Spanish
- Extensive multi-media technical resources to help you
- We investigate all quality concerns to ensure our products perform to the highest standards

If the product does not perform as described on this datasheet, we will offer a refund or replacement. For full details of the Abpromise, please visit <https://www.abcam.co.jp/abpromise> or contact our technical team.

Terms and conditions

- Guarantee only valid for products bought direct from Abcam or one of our authorized distributors