

### Recombinant Human Cofilin 2 protein ab111635

画像数 1

#### 製品の詳細

製品名	Recombinant Human Cofilin 2 protein
精製度	> 90 % SDS-PAGE. ab111635 was purified using conventional chromatography techniques.
発現系	Escherichia coli
アクセッション番号	<b><u>Q9Y281</u></b>
タンパク質長	Full length protein
Animal free	No
由来	Recombinant
生物種	Human
配列	MGSSHHHHHHSSGLVPRGSHMASGVTVNDEVIKVFNDMKVRK SSTQEEIK KRKKAVLFCLSDDKRQIIVEEAKQILVGDIGDTVEDPYTSFV KLLPLNDC RYALYDATYETKESKKEDLVFIFWAPESAPLKSKMIYASSKD AIKKKFTG IKHEWQVNGLDDIKDRSTLGEKLGNNVVVSLEGKPL
予測される分子量	21 kDa including tags
領域	1 to 166
タグ	His tag N-Terminus

#### 特性

Our **Abpromise guarantee** covers the use of **ab111635** in the following tested applications.

The application notes include recommended starting dilutions; optimal dilutions/concentrations should be determined by the end user.

アプリケーション	Mass Spectrometry
	SDS-PAGE
質量分析	MALDI-TOF
製品の状態	Liquid

#### 前処理および保存

## 保存方法および安定性

Shipped at 4°C. Upon delivery aliquot and store at -20°C or -80°C. Avoid repeated freeze / thaw cycles.

pH: 8.00

Constituents: 0.04% DTT, 0.32% Tris HCl, 10% Glycerol (glycerin, glycerine), 0.29% Sodium chloride

## 関連情報

### 機能

Controls reversibly actin polymerization and depolymerization in a pH-sensitive manner. It has the ability to bind G- and F-actin in a 1:1 ratio of cofilin to actin. It is the major component of intranuclear and cytoplasmic actin rods.

### 組織特異性

Isoform CFL2b is expressed predominantly in skeletal muscle and heart. Isoform CFL2a is expressed in various tissues.

### 関連疾患

Defects in CFL2 are the cause of nemaline myopathy type 7 (NEM7) [MIM:610687]. A form of nemaline myopathy. Nemaline myopathies are muscular disorders characterized by muscle weakness of varying severity and onset, and abnormal thread-or rod-like structures in muscle fibers on histologic examination. Nemaline myopathy type 7 presents at birth with hypotonia and generalized weakness. Major motor milestones are delayed, but independent ambulation is achieved.

### 配列類似性

Belongs to the actin-binding proteins ADF family.  
Contains 1 ADF-H domain.

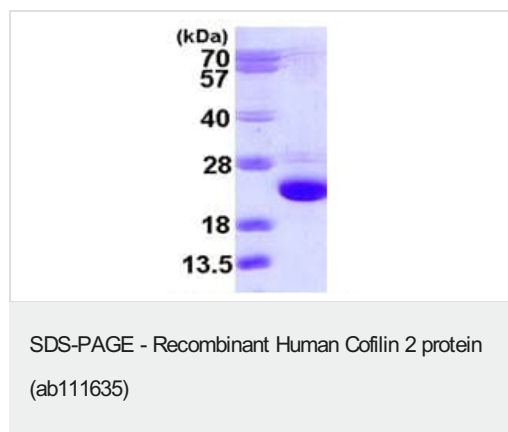
### 翻訳後修飾

The phosphorylation of Ser-24 may prevent recognition of the nuclear localization signal.

### 細胞内局在

Nucleus matrix. Cytoplasm > cytoskeleton.

## 画像



15% SDS-PAGE showing ab111635 at approximately 20.9kDa (3μg).

**Please note:** All products are "FOR RESEARCH USE ONLY. NOT FOR USE IN DIAGNOSTIC PROCEDURES"

## Our Abpromise to you: Quality guaranteed and expert technical support

- Replacement or refund for products not performing as stated on the datasheet
- Valid for 12 months from date of delivery
- Response to your inquiry within 24 hours

- We provide support in Chinese, English, French, German, Japanese and Spanish
- Extensive multi-media technical resources to help you
- We investigate all quality concerns to ensure our products perform to the highest standards

If the product does not perform as described on this datasheet, we will offer a refund or replacement. For full details of the Abpromise, please visit <https://www.abcam.co.jp/abpromise> or contact our technical team.

#### **Terms and conditions**

---

- Guarantee only valid for products bought direct from Abcam or one of our authorized distributors