

# Recombinant human CLK3 protein ab85759

画像数 4

### 製品の詳細

---

製品名	Recombinant human CLK3 protein
生理活性	The Specific activity of ab85759 was determined to be 75 nmol/min/mg.
精製度	> 90 % Densitometry. Affinity purified.
発現系	Baculovirus infected Sf9 cells
タンパク質長	Full length protein
Animal free	No
由来	Recombinant
生物種	Human

### 特性

---

Our **Abpromise guarantee** covers the use of **ab85759** in the following tested applications.

The application notes include recommended starting dilutions; optimal dilutions/concentrations should be determined by the end user.

アプリケーション	Western blot Functional Studies SDS-PAGE
製品の状態	Liquid
備考	<b>ab64311</b> (Myelin Basic Protein protein) can be utilized as a substrate for assessing kinase activity

### 前処理および保存

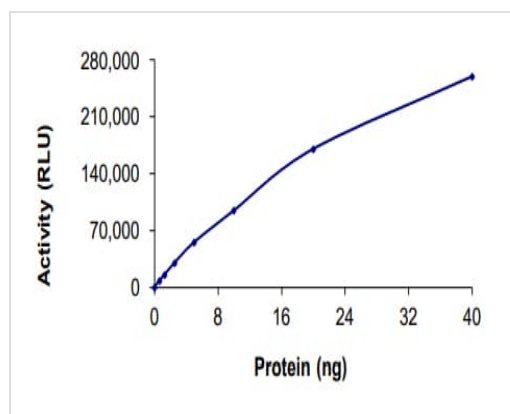
---

保存方法および安定性	Shipped on dry ice. Upon delivery aliquot and store at -80°C. Avoid freeze / thaw cycles. pH: 7.50 Constituents: 0.0038% EGTA, 0.00174% PMSF, 0.00385% DTT, 0.79% Tris HCl, 0.00292% EDTA, 25% Glycerol (glycerin, glycerine), 0.87% Sodium chloride This product is an active protein and may elicit a biological response in vivo, handle with caution.
------------	--

## 関連情報

機能	Phosphorylates serine- and arginine-rich (SR) proteins of the spliceosomal complex. May be a constituent of a network of regulatory mechanisms that enable SR proteins to control RNA splicing. Phosphorylates serines, threonines and tyrosines.
配列類似性	Belongs to the protein kinase superfamily. CMGC Ser/Thr protein kinase family. Lammer subfamily. Contains 1 protein kinase domain.
翻訳後修飾	Autophosphorylates on all three types of residues.
細胞内局在	Nucleus. Cytoplasm. Cytoplasmic vesicle > secretory vesicle > acrosome.

## 画像



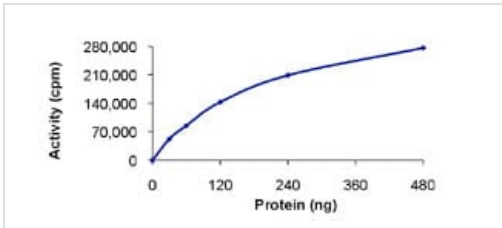
The specific activity of CLK3 (ab85759) was determined to be 28.9 nmol/min/mg as per activity assay protocol and was equivalent to 80 nmol/min/mg as per radiometric assay

Functional Studies - Recombinant human CLK3 protein (ab85759)



SDS PAGE analysis of ab85759

SDS-PAGE - Recombinant human CLK3 protein (ab85759)



The Specific activity of ab85759 was determined to be 75 nmol/min/mg.

Functional Studies - Recombinant human CLK3 protein (ab85759)



SDS-PAGE showing ab85759 at approximately 86kDa.

SDS-PAGE - Recombinant human CLK3 protein (ab85759)

**Please note:** All products are "FOR RESEARCH USE ONLY. NOT FOR USE IN DIAGNOSTIC PROCEDURES"

### Our Abpromise to you: Quality guaranteed and expert technical support

- Replacement or refund for products not performing as stated on the datasheet
- Valid for 12 months from date of delivery
- Response to your inquiry within 24 hours
- We provide support in Chinese, English, French, German, Japanese and Spanish
- Extensive multi-media technical resources to help you
- We investigate all quality concerns to ensure our products perform to the highest standards

If the product does not perform as described on this datasheet, we will offer a refund or replacement. For full details of the Abpromise, please visit <https://www.abcam.co.jp/abpromise> or contact our technical team.

### Terms and conditions

- Guarantee only valid for products bought direct from Abcam or one of our authorized distributors