

# Recombinant Human CLIC4 protein ab104744

★★★★★ [1 Abreviews](#) [1 References](#) [画像数 1](#)

### 製品の詳細

製品名	Recombinant Human CLIC4 protein
精製度	> 95 % SDS-PAGE. ab104744 is purified using conventional chromatography techniques.
発現系	Escherichia coli
アクセッション番号	<b><u>Q9Y696</u></b>
タンパク質長	Full length protein
Animal free	No
由来	Recombinant
生物種	Human
配列	<p>MGSSHHHHHHSSGLVPRGSHMALSMPLNGLKEEDKEPLIE            LFVKAGSDGE            SIGNCPFSQRLFMILWLKGVVFSVTTVDLKRKPADLQNLAPG            THPPFITF            NSEVKTDVNKIEEFLEEVLCPPKYLLKSPKHPESNTAGMDIF            AKFSAYIK            NSRPEANEALERGLLKTQLDEYLN SPLPDEIDENSMDIK            FSTRKFLD            GNEMTLADCNLLPKLHIVKVVAKKYRNFDIPKEMTGIWRYLT            NAYSRDEF TNTCPSDKEVEIAYS DVAKRLTK</p>
予測される分子量	31 kDa including tags
領域	1 to 253
タグ	His tag N-Terminus

### 特性

Our **Abpromise guarantee** covers the use of **ab104744** in the following tested applications.

The application notes include recommended starting dilutions; optimal dilutions/concentrations should be determined by the end user.

アプリケーション	Mass Spectrometry
	SDS-PAGE
質量分析	MALDI-TOF
製品の状態	Liquid

## 前処理および保存

### 保存方法および安定性

Shipped at 4°C. Store at +4°C short term (1-2 weeks). Upon delivery aliquot. Store at -20°C or -80°C. Avoid freeze / thaw cycle.

pH: 8.00

Constituents: 0.0154% DTT, 0.316% Tris HCl, 10% Glycerol (glycerin, glycerine), 0.58% Sodium chloride

## 関連情報

### 機能

Can insert into membranes and form poorly selective ion channels that may also transport chloride ions. Channel activity depends on the pH. Membrane insertion seems to be redox-regulated and may occur only under oxidizing conditions. Promotes cell-surface expression of HRH3. Has alternate cellular functions like a potential role in angiogenesis or in maintaining apical-basolateral membrane polarity during mitosis and cytokinesis. Could also promote endothelial cell proliferation and regulate endothelial morphogenesis (tubulogenesis).

### 組織特異性

Detected in epithelial cells from colon, esophagus and kidney (at protein level). Expression is prominent in heart, kidney, placenta and skeletal muscle.

### 配列類似性

Belongs to the chloride channel CLIC family.

Contains 1 GST C-terminal domain.

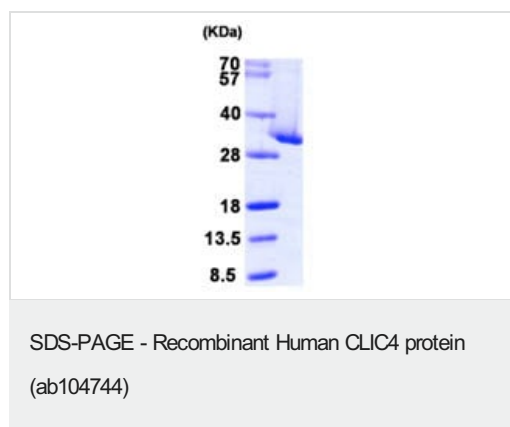
### ドメイン

Members of this family may change from a globular, soluble state to a state where the N-terminal domain is inserted into the membrane and functions as chloride channel. A conformation change of the N-terminal domain is thought to expose hydrophobic surfaces that trigger membrane insertion.

### 細胞内局在

Cytoplasm, cytoskeleton, microtubule organizing center, centrosome. Cytoplasmic vesicle membrane. Nucleus matrix. Cell membrane. Mitochondrion. Cell junction. Colocalized with AKAP9 at the centrosome and midbody. Exists both as soluble cytoplasmic protein and as membrane protein with probably a single transmembrane domain. Present in an intracellular vesicular compartment that likely represent trans-Golgi network vesicles.

## 画像



15% SDS-PAGE (3μg).

**Please note:** All products are "FOR RESEARCH USE ONLY. NOT FOR USE IN DIAGNOSTIC PROCEDURES"

### **Our Abpromise to you: Quality guaranteed and expert technical support**

---

- Replacement or refund for products not performing as stated on the datasheet
- Valid for 12 months from date of delivery
- Response to your inquiry within 24 hours
  
- We provide support in Chinese, English, French, German, Japanese and Spanish
- Extensive multi-media technical resources to help you
- We investigate all quality concerns to ensure our products perform to the highest standards

If the product does not perform as described on this datasheet, we will offer a refund or replacement. For full details of the Abpromise, please visit <https://www.abcam.co.jp/abpromise> or contact our technical team.

### **Terms and conditions**

---

- Guarantee only valid for products bought direct from Abcam or one of our authorized distributors