

Product datasheet

Recombinant Human CLCA1 protein ab114722

画像数 1

製品の詳細

製品名	Recombinant Human CLCA1 protein
発現系	Wheat germ
アクセッション番号	A8K7I4
タンパク質長	Protein fragment
Animal free	No
由来	Recombinant
生物種	Human
配列	ALGGVNAARRRVIPQQSGALYIPGWIENDEIQWNPPRPEINK DDVQHKQV CFSRTSSGGSFVASDVPNAPIPDLFPPGQITDLKAEIHGGSL INLTWTAP
予測される分子量	37 kDa including tags
領域	677 to 776

特性

Our **Abpromise guarantee** covers the use of **ab114722** in the following tested applications.

The application notes include recommended starting dilutions; optimal dilutions/concentrations should be determined by the end user.

アプリケーション	Western blot
	SDS-PAGE
	ELISA
製品の状態	Liquid

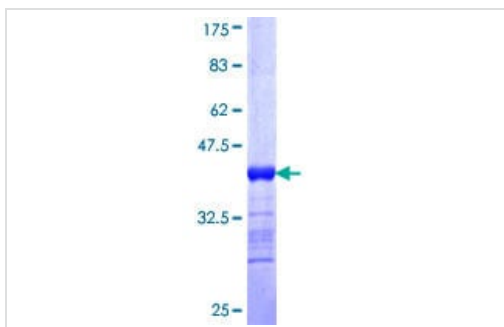
前処理および保存

保存方法および安定性	Shipped on dry ice. Upon delivery aliquot and store at -80°C. Avoid freeze / thaw cycles. pH: 8.00 Constituents: 0.3% Glutathione, 0.79% Tris HCl
------------	---

関連情報

機能	May be involved in mediating calcium-activated chloride conductance. May play critical roles in goblet cell metaplasia, mucus hypersecretion, cystic fibrosis and AHR. May be involved in the regulation of mucus production and/or secretion by goblet cells. Involved in the regulation of tissue inflammation in the innate immune response. May play a role as a tumor suppressor. Induces MUC5AC.
組織特異性	Highly expressed in small intestine and colon namely in intestinal basal crypt epithelia and goblet cells, and appendix. Weakly expressed in uterus, testis and kidney. Expressed in the airways epithelium of both asthmatic and healthy patients. Expressed in the bronchial epithelium, especially in mucus-producing goblet cells. Expressed in normal turbinate mucosa and nasal polyp. Expressed in.
配列類似性	Belongs to the CLCR family. Contains 1 VWFA domain.
翻訳後修飾	Glycosylated. The 125-kDa product is processed and yields to two cell-surface-associated subunits, a 90-kDa protein and a group of 37-to 41-kDa proteins.
細胞内局在	Secreted > extracellular space. Cell membrane. Protein that remains attached to the plasma membrane appeared to be predominantly localized to microvilli.

画像



12.5% SDS-PAGE Stained with Coomassie Blue

SDS-PAGE - Recombinant Human CLCA1 protein
(ab114722)

Please note: All products are "FOR RESEARCH USE ONLY. NOT FOR USE IN DIAGNOSTIC PROCEDURES"

Our Abpromise to you: Quality guaranteed and expert technical support

- Replacement or refund for products not performing as stated on the datasheet
- Valid for 12 months from date of delivery
- Response to your inquiry within 24 hours
- We provide support in Chinese, English, French, German, Japanese and Spanish
- Extensive multi-media technical resources to help you
- We investigate all quality concerns to ensure our products perform to the highest standards

If the product does not perform as described on this datasheet, we will offer a refund or replacement. For full details of the Abpromise, please visit <https://www.abcam.co.jp/abpromise> or contact our technical team.

Terms and conditions

- Guarantee only valid for products bought direct from Abcam or one of our authorized distributors