

Product datasheet

Recombinant Human Clathrin heavy chain protein ab112271

画像数 1

製品の詳細

| | |
|-------------|---------------------------------------------------------------------------------------------------------------------------|
| 製品名 | Recombinant Human Clathrin heavy chain protein |
| 生理活性 | useful for Antibody Production and Protein Array |
| 発現系 | Wheat germ |
| アクセッション番号 | Q00610 |
| タンパク質長 | Protein fragment |
| Animal free | No |
| 由来 | Recombinant |
| 生物種 | Human |
| 配列 | EVGTPPTGNQPFPPKKAVDVFFPPEAQNDFPVAMQISEKHDVV FLITKYG IHLYDLETGTCIYMNRISETIFVTAPHEATAGIIGVNRKGQ VLSVCVEE ENIIPYITN |
| 予測される分子量 | 38 kDa including tags |
| 領域 | 232 to 340 |
| タグ | GST tag N-Terminus |

特性

Our **Abpromise guarantee** covers the use of **ab112271** in the following tested applications.

The application notes include recommended starting dilutions; optimal dilutions/concentrations should be determined by the end user.

| | |
|----------|-------------------------------------------------------------------|
| アプリケーション | Western blot ELISA SDS-PAGE |
| 製品の状態 | Liquid |
| 備考 | This product is useful for Antibody Production and Protein Array. |

前処理および保存

| | |
|------------|-------------------------------------------------------------------------------------------|
| 保存方法および安定性 | Shipped on dry ice. Upon delivery aliquot and store at -80°C. Avoid freeze / thaw cycles. |
|------------|-------------------------------------------------------------------------------------------|

pH: 8.00

Constituents: 0.31% Glutathione, 0.79% Tris HCl

Glutathione is reduced

関連情報

機能

Clathrin is the major protein of the polyhedral coat of coated pits and vesicles. Two different adapter protein complexes link the clathrin lattice either to the plasma membrane or to the trans-Golgi network.

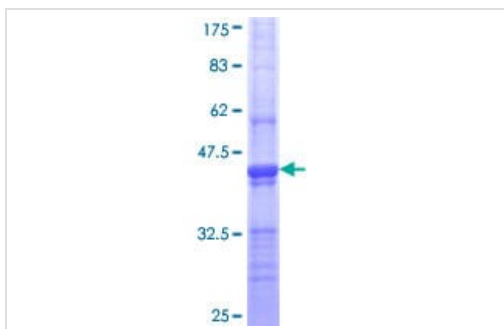
配列類似性

Belongs to the clathrin heavy chain family.

細胞内局在

Cytoplasmic vesicle membrane. Membrane > coated pit. Melanosome. Cytoplasmic face of coated pits and vesicles. Identified by mass spectrometry in melanosome fractions from stage I to stage IV.

画像



12.5% SDS-PAGE Stained with Coomassie Blue.

Western blot - Recombinant Human Clathrin heavy chain protein (ab112271)

Please note: All products are "FOR RESEARCH USE ONLY. NOT FOR USE IN DIAGNOSTIC PROCEDURES"

Our Abpromise to you: Quality guaranteed and expert technical support

- Replacement or refund for products not performing as stated on the datasheet
- Valid for 12 months from date of delivery
- Response to your inquiry within 24 hours
- We provide support in Chinese, English, French, German, Japanese and Spanish
- Extensive multi-media technical resources to help you
- We investigate all quality concerns to ensure our products perform to the highest standards

If the product does not perform as described on this datasheet, we will offer a refund or replacement. For full details of the Abpromise, please visit <https://www.abcam.co.jp/abpromise> or contact our technical team.

Terms and conditions

- Guarantee only valid for products bought direct from Abcam or one of our authorized distributors