

### Recombinant Human CIRP protein ab106903

画像数 1

#### 製品の詳細

製品名	Recombinant Human CIRP protein
精製度	> 95 % SDS-PAGE. ab106903 is purified using conventional chromatography techniques.
発現系	Escherichia coli
アクセッション番号	<b><u>Q14011</u></b>
タンパク質長	Full length protein
Animal free	No
由来	Recombinant
生物種	Human
配列	MGSSHHHHHHSSGLVPRGSHMASDEGKLFVGGLSFDTNEQSL EQVFSKYG QISEVVVVVKDRETQSRGFGFVTFENIDDAKDAMMAMNGKSV DGRQIRVD QAGKSSDNRSRGYRGGSSAGGRGFFRGGGRGRGRGFSRGGGDRG YGGNRFES RSGGYGGSRDYYSSRSQSGGYSDRSSGGSYRDSYDSYATHNE
予測される分子量	21 kDa including tags
領域	1 to 172
タグ	His tag N-Terminus

#### 特性

Our **Abpromise guarantee** covers the use of **ab106903** in the following tested applications.

The application notes include recommended starting dilutions; optimal dilutions/concentrations should be determined by the end user.

アプリケーション	Mass Spectrometry
	SDS-PAGE
質量分析	MALDI-TOF
製品の状態	Liquid

#### 前処理および保存

## 保存方法および安定性

Shipped at 4°C. Upon delivery aliquot and store at -20°C or -80°C. Avoid repeated freeze / thaw cycles.

pH: 8.00

Constituents: 0.02% DTT, 0.32% Tris HCl, 50% Glycerol (glycerin, glycerine), 0.58% Sodium chloride

## 関連情報

### 機能

Cold-inducible mRNA binding protein that plays a protective role in the genotoxic stress response by stabilizing transcripts of genes involved in cell survival. Acts as a translational activator. Seems to play an essential role in cold-induced suppression of cell proliferation. Binds specifically to the 3'-untranslated regions (3'-UTRs) of stress-responsive transcripts RPA2 and TXN. Acts as a translational repressor (By similarity). Promotes assembly of stress granules (SGs), when overexpressed.

### 組織特異性

Ubiquitous.

### 配列類似性

Contains 1 RRM (RNA recognition motif) domain.

### ドメイン

Both the RRM domain and the arginine, glycine (RGG) rich domain are necessary for binding to the TXN 3'-untranslated region. Both the RRM domain and the arginine, glycine (RGG) rich domain (RGG repeats) are necessary for optimal recruitment into SGs upon cellular stress. The C-terminal domain containing RGG repeats is necessary for translational repression.

### 翻訳後修飾

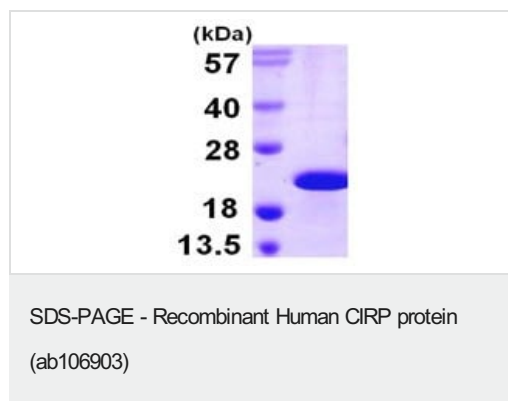
Methylated on arginine residues. Methylation of the RGG motifs is a prerequisite for recruitment into SGs.

Phosphorylated by CK2, GSK3A and GSK3B. Phosphorylation by GSK3B increases RNA-binding activity to the TXN 3'-UTR transcript upon exposure to UV radiation.

### 細胞内局在

Nucleus > nucleoplasm. Cytoplasm. Translocates from the nucleus to the cytoplasm after exposure to UV radiation. Translocates from the nucleus to the cytoplasm into stress granules upon various cytoplasmic stresses, such as osmotic and heat shocks. Its recruitment into stress granules occurs in the absence of TIAR proteins.

## 画像



15% SDS-PAGE showing ab106903 at approximately 20.8kDa (3μg).

**Please note:** All products are "FOR RESEARCH USE ONLY. NOT FOR USE IN DIAGNOSTIC PROCEDURES"

### **Our Abpromise to you: Quality guaranteed and expert technical support**

---

- Replacement or refund for products not performing as stated on the datasheet
- Valid for 12 months from date of delivery
- Response to your inquiry within 24 hours
  
- We provide support in Chinese, English, French, German, Japanese and Spanish
- Extensive multi-media technical resources to help you
- We investigate all quality concerns to ensure our products perform to the highest standards

If the product does not perform as described on this datasheet, we will offer a refund or replacement. For full details of the Abpromise, please visit <https://www.abcam.co.jp/abpromise> or contact our technical team.

### **Terms and conditions**

---

- Guarantee only valid for products bought direct from Abcam or one of our authorized distributors