

# Recombinant Human CETP protein ab114408

画像数 1

### 製品の詳細

---

製品名	Recombinant Human CETP protein
発現系	Wheat germ
アクセッション番号	<b><u>P11597</u></b>
タンパク質長	Full length protein
Animal free	No
由来	Recombinant
生物種	Human
配列	MLAATVLTLLALLGNAHACSKGTSHEAGIVCRITKPALLVLNH ETAKVIQT AFQRASYPDITGEKAMMLLGQVKYGLHNIQISHLSIASSQVE LVEAKSID VSIQNVSVVFKGTLKYGYTTAWWLGIDQSIDFEIDSAIDLQI NTQLTCDS GRVRTDAPDCYLSFHKLLLHLQGEREPGWIKQLFTNFISFTL KLVKGGQI CKEINVISNIMADFVQTRAASILSDGDIGVDISLTGDPVITA SYLESHHK GHFIYKNVSEDLPLPTFSPTLLGDSRMLYFWFSERVFHSLAK VAFQDGRLL MLSLMGDEFKAVLETWGFNTNQEIFQEVVGGFSPQAQVTVHC LKMPKISC QNKGVVNSSVMVKFLFPRPDQQHSVAYTFEEDIVTTVQASY SKKKLFLS LLDFQITPKTVSNL TESSSESIQSFLQSMITAVGIPEVTSRL EVVFTALM NSKGVSLFDIINPEIITRDGFLLLQMDFGFPEHLLVDFLQSL S
予測される分子量	80 kDa including tags
領域	1 to 493

### 特性

---

Our **Abpromise guarantee** covers the use of **ab114408** in the following tested applications.

The application notes include recommended starting dilutions; optimal dilutions/concentrations should be determined by the end user.

<b>アプリケーション</b>	SDS-PAGE ELISA Western blot
<b>製品の状態</b>	Liquid
<b>備考</b>	

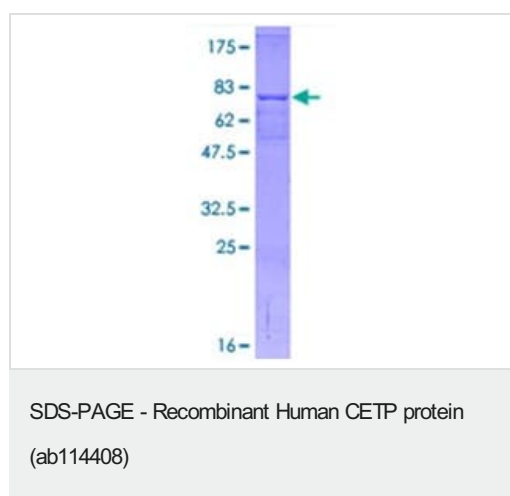
#### 前処理および保存

<b>保存方法および安定性</b>	Shipped on dry ice. Upon delivery aliquot and store at -80°C. Avoid freeze / thaw cycles. pH: 8.00 Constituents: 0.3% Glutathione, 0.79% Tris HCl
-------------------	---

#### 関連情報

<b>機能</b>	Involved in the transfer of insoluble cholesteryl esters in the reverse transport of cholesterol.
<b>組織特異性</b>	Expressed by the liver and secreted in plasma.
<b>関連疾患</b>	Defects in CETP are a cause of hyperalphalipoproteinemia (HYPALIP) [MIM:143470]. Affected individuals show high levels of alpha-lipoprotein (high density lipoprotein/HDL). Defects in CETP are the cause of cholesteryl ester transfer protein deficiency (CETP deficiency) [MIM:607322]. This is an autosomal dominant condition associated with increased HDL cholesterol levels.
<b>配列類似性</b>	Belongs to the BPI/LBP/Plunc superfamily. BPI/LBP family.
<b>細胞内局在</b>	Secreted > extracellular space.

#### 画像



12.5% SDS-PAGE analysis of ab114408 stained with Coomassie Blue.

**Please note:** All products are "FOR RESEARCH USE ONLY. NOT FOR USE IN DIAGNOSTIC PROCEDURES"

## **Our Abpromise to you: Quality guaranteed and expert technical support**

---

- Replacement or refund for products not performing as stated on the datasheet
- Valid for 12 months from date of delivery
- Response to your inquiry within 24 hours
  
- We provide support in Chinese, English, French, German, Japanese and Spanish
- Extensive multi-media technical resources to help you
- We investigate all quality concerns to ensure our products perform to the highest standards

If the product does not perform as described on this datasheet, we will offer a refund or replacement. For full details of the Abpromise, please visit <https://www.abcam.co.jp/abpromise> or contact our technical team.

## **Terms and conditions**

---

- Guarantee only valid for products bought direct from Abcam or one of our authorized distributors