

### Recombinant Human CENPH protein (denatured) ab113134

画像数 1

#### 製品の詳細

製品名	Recombinant Human CENPH protein (denatured)
精製度	> 90 % SDS-PAGE. ab113134 was denatured using detergent during a conventional chromatography purification process.
発現系	Escherichia coli
アクセッション番号	<b><u>Q9H3R5</u></b>
タンパク質長	Protein fragment
Animal free	No
由来	Recombinant
生物種	Human
配列	<b>MGSSHHHHHHSSGLVPRGSHMLNKLIMKSQQESWDLEEKL LDI RKKRL QLKQASESKLLEIQTEKNKQKIDLDSMENSERIKIIRQNLQM EIK ITT VIQHVFNQLILGSKVNWAEAPALKEIVLQLEKNVDM</b>
予測される分子量	16 kDa including tags
領域	136 to 247
タグ	His tag N-Terminus
製品の詳細	Recombinant Human CENPH protein

#### 特性

Our **Abpromise guarantee** covers the use of **ab113134** in the following tested applications.

The application notes include recommended starting dilutions; optimal dilutions/concentrations should be determined by the end user.

アプリケーション SDS-PAGE

製品の状態 Liquid

#### 前処理および保存

保存方法および安定性 Shipped at 4°C. Store at +4°C short term (1-2 weeks). Upon delivery aliquot. Store at -20°C or -80°C. Avoid freeze / thaw cycle.

pH: 8.00

Constituents: 0.32% Tris HCl, 10% Glycerol (glycerin, glycerine)

## 関連情報

### 機能

Component of the CENPA-NAC (nucleosome-associated) complex, a complex that plays a central role in assembly of kinetochore proteins, mitotic progression and chromosome segregation. The CENPA-NAC complex recruits the CENPA-CAD (nucleosome distal) complex and may be involved in incorporation of newly synthesized CENPA into centromeres. Required for chromosome congression and efficiently align the chromosomes on a metaphase plate.

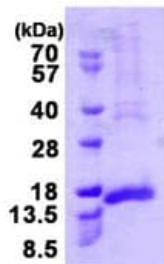
### 配列類似性

Belongs to the centromere protein H family.

### 細胞内局在

Nucleus. Chromosome > centromere > kinetochore. Associates with active centromere-kinetochore complexes throughout the cell cycle. Colocalizes with inner kinetochore plate proteins CENPA and CENPC1 during both interphase and metaphase.

## 画像



15% SDS-PAGE analysis of 3 µg ab113134.

SDS-PAGE - Recombinant Human CENPH protein  
(denatured) (ab113134)

**Please note:** All products are "FOR RESEARCH USE ONLY. NOT FOR USE IN DIAGNOSTIC PROCEDURES"

## Our Abpromise to you: Quality guaranteed and expert technical support

- Replacement or refund for products not performing as stated on the datasheet
- Valid for 12 months from date of delivery
- Response to your inquiry within 24 hours
- We provide support in Chinese, English, French, German, Japanese and Spanish
- Extensive multi-media technical resources to help you
- We investigate all quality concerns to ensure our products perform to the highest standards

If the product does not perform as described on this datasheet, we will offer a refund or replacement. For full details of the Abpromise, please visit <https://www.abcam.co.jp/abpromise> or contact our technical team.

## Terms and conditions

- Guarantee only valid for products bought direct from Abcam or one of our authorized distributors