

Product datasheet

Recombinant Human CDK6 + CCND3 protein ab89010

画像数 1

製品の詳細

製品名	Recombinant Human CDK6 + CCND3 protein
精製度	> 90 % Densitometry. Affinity purified.
発現系	Baculovirus infected Sf9 cells
タンパク質長	Full length protein
Animal free	No
由来	Recombinant
生物種	Human

特性

Our **Abpromise guarantee** covers the use of **ab89010** in the following tested applications.

The application notes include recommended starting dilutions; optimal dilutions/concentrations should be determined by the end user.

アプリケーション	Western blot SDS-PAGE
----------	--------------------------

製品の状態	Liquid
-------	--------

前処理および保存

保存方法および安定性	Shipped on dry ice. Upon delivery aliquot and store at -80°C. Avoid freeze / thaw cycles. pH: 7.00 Preservative: 1.02% Imidazole Constituents: 0.00174% PMSF, 0.82% Sodium phosphate, 0.00308% DTT, 25% Glycerol (glycerin, glycerine), 1.74% Sodium chloride
------------	--

関連情報

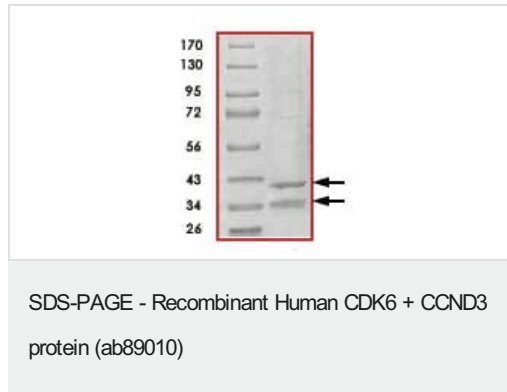
関連性	CDK family members are highly similar to the gene products of <i>Saccharomyces cerevisiae</i> cdc28, and <i>Schizosaccharomyces pombe</i> cdc2, and are known to be important regulators of cell cycle progression. This kinase is a catalytic subunit of the protein kinase complex that is important for cell cycle G1 phase progression and G1/S transition. The activity of Cdk6 first appears in mid-
-----	--

G1 phase, and is controlled by regulatory subunits including D-type cyclins and members of INK4 family of CDK inhibitors. This kinase, as well as CDK4, has been shown to phosphorylate, and thus regulate the activity of, tumor suppressor protein Rb. Cyclin D3 is a G1 cyclin closely related to cyclin D1 and D2. Cyclins D1, D2, and D3 are members of a growing superfamily of cyclins, proteins that govern transitions through distinct phases of the cell cycle by regulating the activity of cyclin-dependent kinases (cdks). All three known members of the D-type subfamily form active kinase complexes in vivo with a distinct subset of cdks, particularly with cdk4 and cdk6.

細胞内局在

CCND3: Cytoplasm. Nucleus

画像



SDS-PAGE showing ab89010 at approximately 35kDa (CCND3) and 40kDa (CDK6).

Please note: All products are "FOR RESEARCH USE ONLY. NOT FOR USE IN DIAGNOSTIC PROCEDURES"

Our Abpromise to you: Quality guaranteed and expert technical support

- Replacement or refund for products not performing as stated on the datasheet
- Valid for 12 months from date of delivery
- Response to your inquiry within 24 hours
- We provide support in Chinese, English, French, German, Japanese and Spanish
- Extensive multi-media technical resources to help you
- We investigate all quality concerns to ensure our products perform to the highest standards

If the product does not perform as described on this datasheet, we will offer a refund or replacement. For full details of the Abpromise, please visit <https://www.abcam.co.jp/abpromise> or contact our technical team.

Terms and conditions

- Guarantee only valid for products bought direct from Abcam or one of our authorized distributors