

Recombinant Human CDC42 protein ab87713

画像数 2

製品の詳細

製品名	Recombinant Human CDC42 protein
精製度	> 95 % SDS-PAGE. ab87713 is purified using conventional chromatography techniques. Endotoxin: < 1.0 EU per 1 microgram of protein (determined by LAL method).
発現系	Escherichia coli
タンパク質長	Full length protein
Animal free	No
由来	Recombinant
生物種	Human
配列	MASMTGGGQQM GRGSHMQTIK CVVVGDGAVG KTCLLISYTT NKFPSEYVPT VFDNYAVTVM IGGEPYTLGL FDTAGQEDYD RLRPLSYPQT DVFLVCFSV SPSSFENVKE KVVPEITHHC PKTPFLLVGT QIDLRDDPST IEKLAKNKQK PITPETAEKL ARDLKAVKYV ECSALTQKGL KNVFDEAILA ALEPPEPKKS RRC

特性

Our **Abpromise guarantee** covers the use of **ab87713** in the following tested applications.

The application notes include recommended starting dilutions; optimal dilutions/concentrations should be determined by the end user.

アプリケーション	SDS-PAGE
	Western blot

製品の状態	Liquid
-------	--------

前処理および保存

保存方法および安定性	Shipped at 4°C. Upon delivery aliquot and store at -20°C. Avoid repeated freeze / thaw cycles. pH: 8.00 Constituents: 0.0154% DTT, 0.316% Tris HCl, 0.0584% EDTA, 10% Glycerol (glycerin, glycerine)
------------	--

関連情報

機能

Plasma membrane-associated small GTPase which cycles between an active GTP-bound and an inactive GDP-bound state. In active state binds to a variety of effector proteins to regulate cellular responses. Involved in epithelial cell polarization processes. Causes the formation of thin, actin-rich surface projections called filopodia.

配列類似性

Belongs to the small GTPase superfamily. Rho family. CDC42 subfamily.

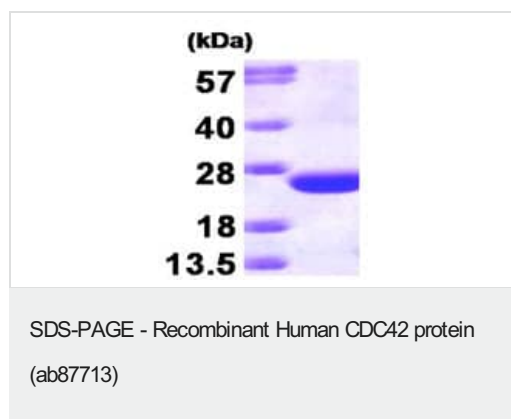
翻訳後修飾

AMPylation at Tyr-32 and Thr-35 are mediated by bacterial enzymes in case of infection by *H.somnus* and *V.parahaemolyticus*, respectively. AMPylation occurs in the effector region and leads to inactivation of the GTPase activity by preventing the interaction with downstream effectors, thereby inhibiting actin assembly in infected cells. It is unclear whether some human enzyme mediates AMPylation; FICD has such ability in vitro but additional experiments remain to be done to confirm results in vivo.

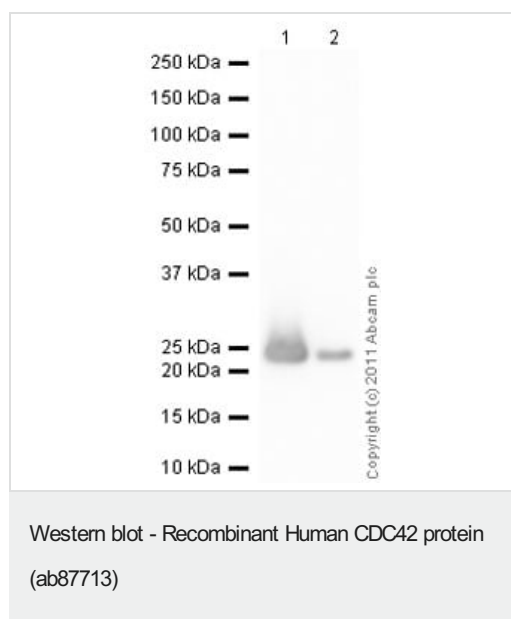
細胞内局在

Cell membrane.

画像



15% SDS-PAGE showing ab87713 at approximately 22.4kDa (3μg).



All lanes : Anti-CDC42 antibody ([ab64533](#)) at 1 μg/ml

Lane 1 : Recombinant Human CDC42 protein (ab87713) at 0.1 μg

Lane 2 : Recombinant Human CDC42 protein (ab87713) at 0.01 μg

Secondary

All lanes : Goat Anti-Rabbit IgG H&L (HRP) preadsorbed ([ab97080](#)) at 1/5000 dilution

Developed using the ECL technique.

Performed under reducing conditions.

Exposure time: 1 minute

Please note: All products are "FOR RESEARCH USE ONLY. NOT FOR USE IN DIAGNOSTIC PROCEDURES"

Our Abpromise to you: Quality guaranteed and expert technical support

- Replacement or refund for products not performing as stated on the datasheet
- Valid for 12 months from date of delivery
- Response to your inquiry within 24 hours

- We provide support in Chinese, English, French, German, Japanese and Spanish
- Extensive multi-media technical resources to help you
- We investigate all quality concerns to ensure our products perform to the highest standards

If the product does not perform as described on this datasheet, we will offer a refund or replacement. For full details of the Abpromise, please visit <https://www.abcam.co.jp/abpromise> or contact our technical team.

Terms and conditions

- Guarantee only valid for products bought direct from Abcam or one of our authorized distributors