

Recombinant human CD167a/DDR1 protein ab101591

画像数 5

製品の詳細

製品名	Recombinant human CD167a/DDR1 protein
生理活性	The specific activity of CD167a/DDR1 is determined to be 5 nmol/min/mg
精製度	> 90 % SDS-PAGE. The purity was determined to be >90% by densitometry. Affinity purified.
発現系	Baculovirus infected insect cells
アクセッション番号	<u>Q08345-2</u>
タンパク質長	Protein fragment
Animal free	No
由来	Recombinant
生物種	Human
予測される分子量	77 kDa including tags
領域	444 to 876

特性

Our **Abpromise guarantee** covers the use of **ab101591** in the following tested applications.

The application notes include recommended starting dilutions; optimal dilutions/concentrations should be determined by the end user.

アプリケーション	Functional Studies Western blot SDS-PAGE
製品の状態	Liquid
備考	<u>ab204867</u> (IRS1 peptide) can be utilized as a substrate for assessing kinase activity This product was previously labelled as MCK10

前処理および保存

保存方法および安定性	Shipped on dry ice. Upon delivery aliquot and store at -80°C. Avoid freeze / thaw cycles. pH: 7.50 Constituents: 0.307% Glutathione, 0.00174% PMSF, 0.00385% DTT, 0.79% Tris HCl, 0.00292%
------------	--

EDTA, 25% Glycerol (glycerin, glycerine), 0.87% Sodium chloride

This product is an active protein and may elicit a biological response in vivo, handle with caution.

関連情報

機能

May be involved in cell-cell interactions and recognition.

組織特異性

Detected in T-47D, MDA-MB-175 and HBL-100 breast carcinoma cells, A431 epidermoid carcinoma cells, SW48 and SNU-C2B colon carcinoma cells and Hs 294T melanoma cells (at protein level). Expressed at low levels in most adult tissues and is highest in the brain, lung, placenta and kidney. Lower levels of expression are detected in melanocytes, heart, liver, skeletal muscle and pancreas. Abundant in breast carcinoma cell lines. In the colonic mucosa, expressed in epithelia but not in the connective tissue of the lamina propria. In the thyroid gland, expressed in the epithelium of the thyroid follicles. In pancreas, expressed in the islets of Langerhans cells, but not in the surrounding epithelial cells of the exocrine pancreas. In kidney, expressed in the epithelia of the distal tubules. Not expressed in connective tissue, endothelial cells, adipose tissue, muscle cells or cells of hematopoietic origin.

配列類似性

Belongs to the protein kinase superfamily. Tyr protein kinase family. Insulin receptor subfamily. Contains 1 F5/8 type C domain. Contains 1 protein kinase domain.

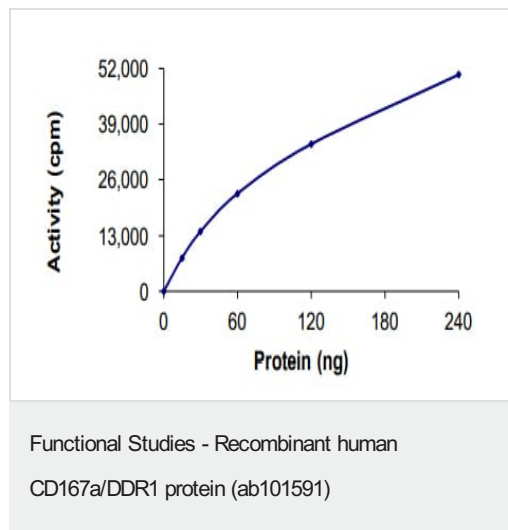
ドメイン

The Gly/Pro-rich domains may be required for an unusual geometry of interaction with ligand or substrates.

細胞内局在

Secreted and Membrane.

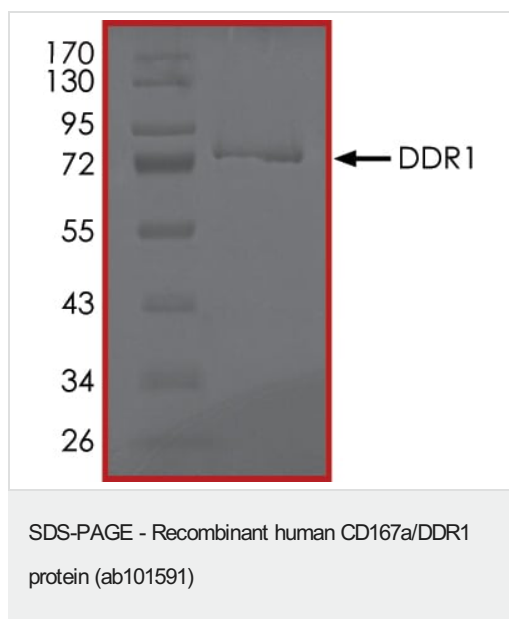
画像



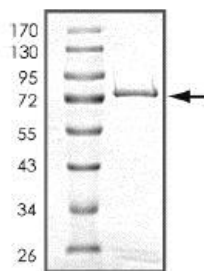
The specific activity of MCK10/NEP (ab101591) was determined to be 6 nmol/min/mg as per activity assay protocol



SDS PAGE analysis of ab101591

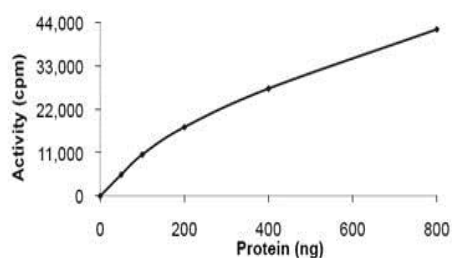


SDS PAGE analysis of ab101591



SDS-PAGE analysis of ab101591

SDS-PAGE - Recombinant human CD167a/DDR1 protein (ab101591)



Specific activity of ab101591

Functional Studies - Recombinant human CD167a/DDR1 protein (ab101591)

Please note: All products are "FOR RESEARCH USE ONLY. NOT FOR USE IN DIAGNOSTIC PROCEDURES"

Our Abpromise to you: Quality guaranteed and expert technical support

- Replacement or refund for products not performing as stated on the datasheet
- Valid for 12 months from date of delivery
- Response to your inquiry within 24 hours
- We provide support in Chinese, English, French, German, Japanese and Spanish
- Extensive multi-media technical resources to help you
- We investigate all quality concerns to ensure our products perform to the highest standards

If the product does not perform as described on this datasheet, we will offer a refund or replacement. For full details of the Abpromise, please visit <https://www.abcam.co.jp/abpromise> or contact our technical team.

Terms and conditions

- Guarantee only valid for products bought direct from Abcam or one of our authorized distributors