

### Recombinant Human Caveolin-1 protein ab114170

画像数 2

#### 製品の詳細

製品名	Recombinant Human Caveolin-1 protein
発現系	Wheat germ
アクセッション番号	<b>Q03135</b>
タンパク質長	Full length protein
Animal free	No
由来	Recombinant
生物種	Human
配列	MSGGKYVDSEGHLYTVPIREQGNIYKPNNKAMADELSEKQVY DAHTKEID LVNRDPKHLNDDVVKIDFEDVIAEPEGTHSFDGIWKASFTTF TVTKYWFY RLLSALFGIPMALIWGIYFAILSFLHIWAVVPCIKSFLIEIQ CISRVYSI YVHTVCDPLFEAVGKIFSNVRINLQKEI
予測される分子量	46 kDa including tags
領域	1 to 178
配列の追加情報	There is a GST tag at N-terminal end.

#### 特性

Our **Abpromise guarantee** covers the use of **ab114170** in the following tested applications.

The application notes include recommended starting dilutions; optimal dilutions/concentrations should be determined by the end user.

アプリケーション	SDS-PAGE
	Western blot
	ELISA
製品の状態	Liquid

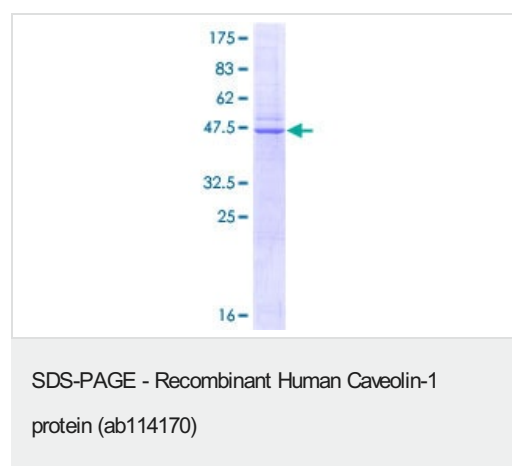
#### 前処理および保存

保存方法および安定性	Shipped on dry ice. Upon delivery aliquot and store at -80°C. Avoid freeze / thaw cycles. pH: 8.00 Constituents: 0.3% Glutathione, 0.79% Tris HCl
------------	---

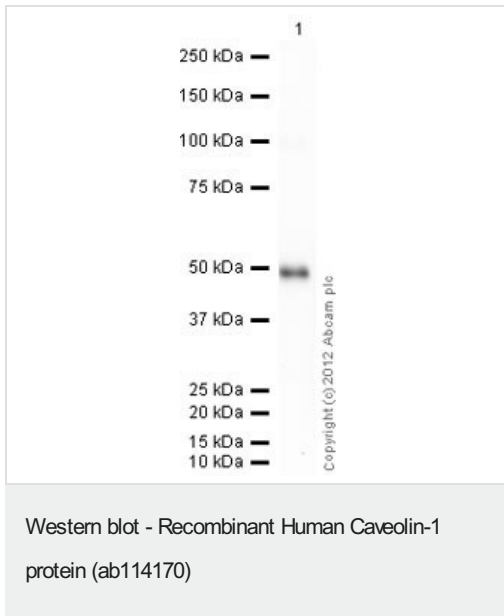
## 関連情報

機能	May act as a scaffolding protein within caveolar membranes. Interacts directly with G-protein alpha subunits and can functionally regulate their activity (By similarity). Involved in the costimulatory signal essential for T-cell receptor (TCR)-mediated T-cell activation. Its binding to DPP4 induces T-cell proliferation and NF-kappa-B activation in a T-cell receptor/CD3-dependent manner. Recruits CTNNB1 to caveolar membranes and may regulate CTNNB1-mediated signaling through the Wnt pathway.
組織特異性	Expressed in muscle and lung, less so in liver, brain and kidney.
関連疾患	Defects in CAV1 are the cause of congenital generalized lipodystrophy type 3 (CGL3) [MIM:612526]; also called Berardinelli-Seip congenital lipodystrophy type 3 (BSCL3). Congenital generalized lipodystrophies are autosomal recessive disorders characterized by a near absence of adipose tissue, extreme insulin resistance, hypertriglyceridemia, hepatic steatosis and early onset of diabetes.
配列類似性	Belongs to the caveolin family.
翻訳後修飾	The initiator methionine for isoform Beta is removed during or just after translation. The new N-terminal amino acid is then N-acetylated.
細胞内局在	Golgi apparatus membrane. Cell membrane. Membrane > caveola. Membrane raft. Colocalized with DPP4 in membrane rafts. Potential hairpin-like structure in the membrane. Membrane protein of caveolae.

## 画像



ab114170 on a 12.5% SDS-PAGE Stained with Coomassie Blue.



**ab18199** recognizes the full length tagged recombinant Caveolin 1 protein (ab114170) which has an expected molecular weight of 46 kDa.

**Please note:** All products are "FOR RESEARCH USE ONLY. NOT FOR USE IN DIAGNOSTIC PROCEDURES"

#### Our Abpromise to you: Quality guaranteed and expert technical support

---

- Replacement or refund for products not performing as stated on the datasheet
- Valid for 12 months from date of delivery
- Response to your inquiry within 24 hours
- We provide support in Chinese, English, French, German, Japanese and Spanish
- Extensive multi-media technical resources to help you
- We investigate all quality concerns to ensure our products perform to the highest standards

If the product does not perform as described on this datasheet, we will offer a refund or replacement. For full details of the Abpromise, please visit <https://www.abcam.co.jp/abpromise> or contact our technical team.

#### Terms and conditions

---

- Guarantee only valid for products bought direct from Abcam or one of our authorized distributors