

# Recombinant human Casein Kinase 1 gamma 2 protein ab104025

画像数 2

### 製品の詳細

---

製品名	Recombinant human Casein Kinase 1 gamma 2 protein
生理活性	The Specific activity of ab104025 was determined to be 30 nmol/min/mg.
精製度	> 80 % SDS-PAGE. Purity was determined to be >85% by densitometry. Affinity purified.
発現系	Baculovirus infected Sf9 cells
アクセッション番号	<b><u>P78368</u></b>
タンパク質長	Full length protein
Animal free	No
由来	Recombinant
生物種	Human
予測される分子量	73 kDa including tags
領域	1 to 415

### 特性

---

Our **Abpromise guarantee** covers the use of **ab104025** in the following tested applications.

The application notes include recommended starting dilutions; optimal dilutions/concentrations should be determined by the end user.

アプリケーション	Functional Studies Western blot
製品の状態	Liquid

### 前処理および保存

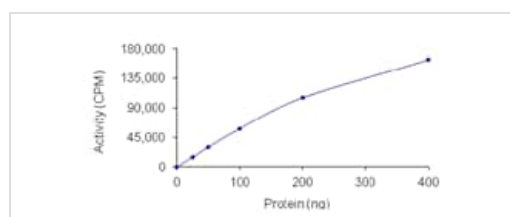
---

保存方法および安定性	Shipped on dry ice. Upon delivery aliquot and store at -80°C. Avoid freeze / thaw cycles. pH: 7.50 Constituents: 0.307% Glutathione, 0.00174% PMSF, 0.00385% DTT, 0.79% Tris HCl, 0.00292% EDTA, 25% Glycerol (glycerin, glycerine), 0.87% Sodium chloride This product is an active protein and may elicit a biological response in vivo, handle with caution.
------------	--

## 関連情報

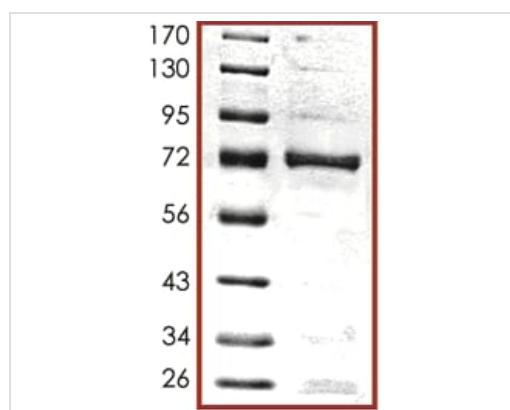
<b>機能</b>	Serine/threonine-protein kinase. Casein kinases are operationally defined by their preferential utilization of acidic proteins such as caseins as substrates. It can phosphorylate a large number of proteins. Participates in Wnt signaling (By similarity). Phosphorylates COL4A3BP/CERT, MTA1 and SMAD3. Involved in brain development and vesicular trafficking and neurotransmitter releasing from small synaptic vesicles. Regulates fast synaptic transmission mediated by glutamate. SMAD3 phosphorylation promotes its ligand-dependent ubiquitination and subsequent proteasome degradation, thus inhibiting SMAD3-mediated TGF-beta responses. Hyperphosphorylation of the serine-repeat motif of COL4A3BP/CERT leads to its inactivation by dissociation from the Golgi complex, thus down-regulating ER-to-Golgi transport of ceramide and sphingomyelin synthesis.
<b>組織特異性</b>	Testis.
<b>配列類似性</b>	Belongs to the protein kinase superfamily. CK1 Ser/Thr protein kinase family. Casein kinase I subfamily. Contains 1 protein kinase domain.
<b>翻訳後修飾</b>	Autophosphorylated.
<b>細胞内局在</b>	Cytoplasm.

## 画像



The Specific activity of ab104025 was determined to be 30 nmol/min/mg.

Functional Studies - Recombinant human Casein Kinase 1 gamma 2 protein (ab104025)



SDS-PAGE showing ab104025 at approximately 73kDa.

SDS-PAGE - Recombinant human Casein Kinase 1 gamma 2 protein (ab104025)

**Please note:** All products are "FOR RESEARCH USE ONLY. NOT FOR USE IN DIAGNOSTIC PROCEDURES"

### **Our Abpromise to you: Quality guaranteed and expert technical support**

---

- Replacement or refund for products not performing as stated on the datasheet
- Valid for 12 months from date of delivery
- Response to your inquiry within 24 hours
  
- We provide support in Chinese, English, French, German, Japanese and Spanish
- Extensive multi-media technical resources to help you
- We investigate all quality concerns to ensure our products perform to the highest standards

If the product does not perform as described on this datasheet, we will offer a refund or replacement. For full details of the Abpromise, please visit <https://www.abcam.co.jp/abpromise> or contact our technical team.

### **Terms and conditions**

---

- Guarantee only valid for products bought direct from Abcam or one of our authorized distributors