

Recombinant human Casein Kinase 1 delta/CSNK1D protein ab103955

2 References [画像数 5](#)

製品の詳細

製品名	Recombinant human Casein Kinase 1 delta/CSNK1D protein
生理活性	The Specific activity of ab103955 was determined to be 82 nmol/min/mg.
精製度	> 80 % Densitometry. Purity was determined to be >80% by densitometry. Affinity purified.
発現系	Baculovirus infected Sf9 cells
アクセッション番号	<u>P48730</u>
タンパク質長	Full length protein
Animal free	No
由来	Recombinant
生物種	Human
予測される分子量	72 kDa including tags
領域	1 to 415

特性

Our **Abpromise guarantee** covers the use of **ab103955** in the following tested applications.

The application notes include recommended starting dilutions; optimal dilutions/concentrations should be determined by the end user.

アプリケーション	Functional Studies SDS-PAGE Western blot
製品の状態	Liquid
備考	<u>ab91090</u> (Cow Casein full length protein) can be utilized as a substrate for assessing Kinase activity Previously labelled as Casein Kinase 1 delta.

前処理および保存

保存方法および安定性	Shipped on dry ice. Upon delivery aliquot and store at -80°C. Avoid freeze / thaw cycles.
------------	---

pH: 7.50

Constituents: 0.307% Glutathione, 0.00174% PMSF, 0.00385% DTT, 0.79% Tris HCl, 0.00292% EDTA, 25% Glycerol (glycerin, glycerine), 0.87% Sodium chloride

This product is an active protein and may elicit a biological response in vivo, handle with caution.

関連情報

機能

Casein kinases are operationally defined by their preferential utilization of acidic proteins such as caseins as substrates. It can phosphorylate a large number of proteins. Participates in Wnt signaling. Central component of the circadian clock. May act as a negative regulator of circadian rhythmicity by phosphorylating PER1 and PER2. Retains PER1 in the cytoplasm.

組織特異性

Expressed in all tissues examined, including brain, heart, lung, liver, pancreas, kidney, placenta and skeletal muscle. In blood, highly expressed in hemopoietic cells and mature granulocytes. Also found in monocytes and lymphocytes.

関連疾患

Defects in CSNK1D are a cause of familial advanced sleep-phase syndrome (FASPS) [MIM:604348]. FASPS is characterized by very early sleep onset and offset. Individuals are 'morning larks' with a 4 hours advance of the sleep, temperature and melatonin rhythms.

配列類似性

Belongs to the protein kinase superfamily. CK1 Ser/Thr protein kinase family. Casein kinase I subfamily.

Contains 1 protein kinase domain.

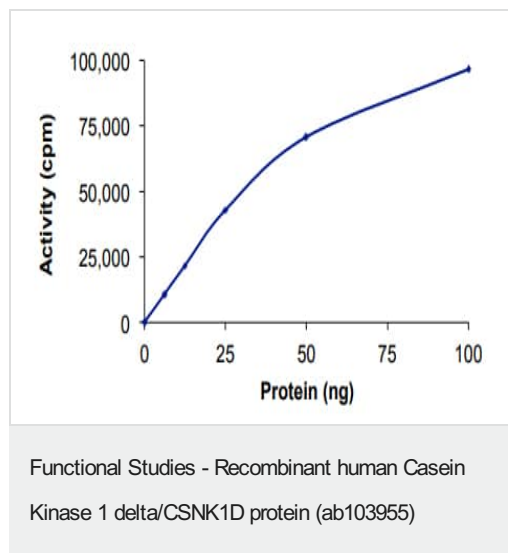
翻訳後修飾

Autophosphorylated on serine and threonine residues.

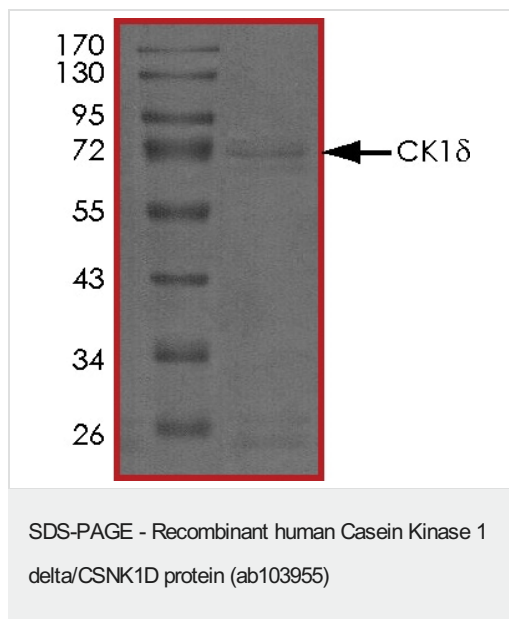
細胞内局在

Cytoplasm. Nucleus.

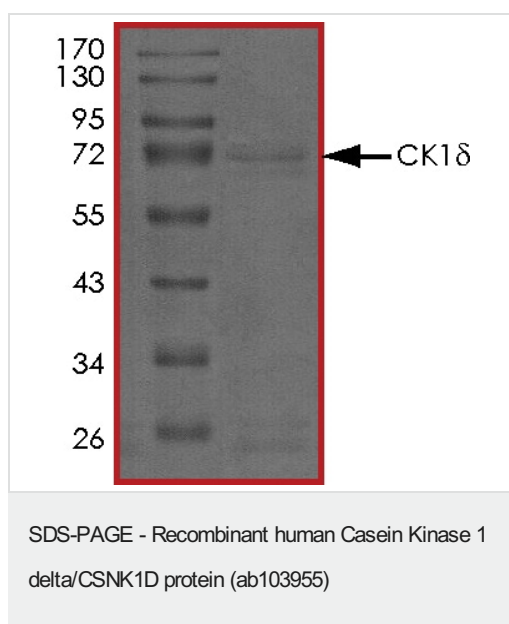
画像



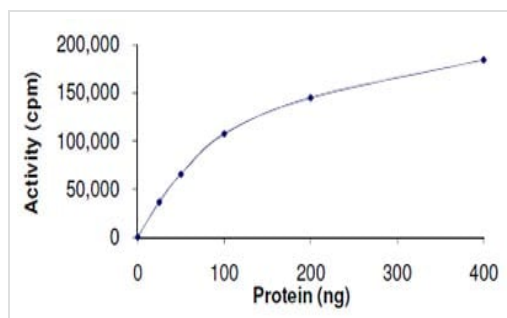
The specific activity of Casein Kinase 1 delta/CSNK1D (ab103955) was determined to be 77 nmol/min/mg as per activity assay protocol



SDS PAGE analysis of ab103955

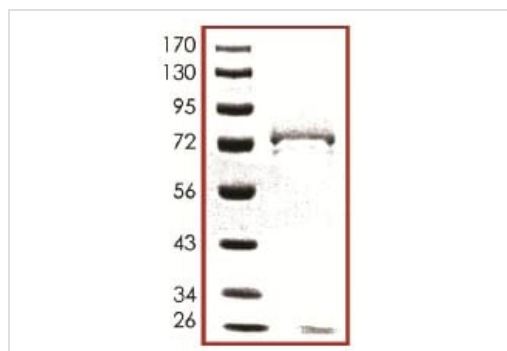


SDS PAGE analysis of ab103955



The Specific activity of ab103955 was determined to be 82 nmol/min/mg.

Functional Studies - Recombinant human Casein Kinase 1 delta/CSNK1D protein (ab103955)



SDS-PAGE showing ab103955 at approximately 72kDa.

SDS-PAGE - Recombinant human Casein Kinase 1 delta/CSNK1D protein (ab103955)

Please note: All products are "FOR RESEARCH USE ONLY. NOT FOR USE IN DIAGNOSTIC PROCEDURES"

Our Abpromise to you: Quality guaranteed and expert technical support

- Replacement or refund for products not performing as stated on the datasheet
- Valid for 12 months from date of delivery
- Response to your inquiry within 24 hours
- We provide support in Chinese, English, French, German, Japanese and Spanish
- Extensive multi-media technical resources to help you
- We investigate all quality concerns to ensure our products perform to the highest standards

If the product does not perform as described on this datasheet, we will offer a refund or replacement. For full details of the Abpromise, please visit <https://www.abcam.co.jp/abpromise> or contact our technical team.

Terms and conditions

- Guarantee only valid for products bought direct from Abcam or one of our authorized distributors