

Recombinant Human CANT1 protein ab123189

画像数 1

製品の詳細

製品名	Recombinant Human CANT1 protein
精製度	> 90 % SDS-PAGE. ab123189 is purified using conventional chromatography techniques.
発現系	Escherichia coli
アクセッション番号	<u>Q8WVQ1</u>
タンパク質長	Protein fragment
Animal free	No
由来	Recombinant
生物種	Human
配列	MGSSHHHHHH SGLVPRGSH MGSMPAPG RPPTHNAHNW RLGQAPANWY NDTYPLSPPQ RTPAGIRYRI AVIADLDTES RAQEENTWFS YLKKGYLTL SSGDKVAVEW DKDHGVLESH LAEKGRGMEL SDLIVFNGKL YSVDDRTGVV YQIEGSKAVP WVILSDGDGT VEKGFKAEWL AVKDERLYVG GLGKEWTTTT GDVVNENPEW VKVVGKGSV DHENWVSNYN ALRAAAGIQP PGYLIHESAC WSDTLQRWFF LPRRASQERY SEKDDERKGA NLLLSASPDF GDIAVSHVGA VVPHTGFSSF KFIPNTDDQI IVALKSEEDS GRVASYIMAF TLDGRFLLPE TKIGSVKYEY IEFI
予測される分子量	41 kDa including tags
領域	63 to 401
タグ	His tag N-Terminus

特性

Our **Abpromise guarantee** covers the use of **ab123189** in the following tested applications.

The application notes include recommended starting dilutions; optimal dilutions/concentrations should be determined by the end user.

アプリケーション	Mass Spectrometry
	SDS-PAGE
質量分析	MALDI-TOF

製品の状態

Liquid

前処理および保存

保存方法および安定性

Shipped at 4°C. Upon delivery aliquot and store at -20°C or -80°C. Avoid repeated freeze / thaw cycles.

pH: 8.00

Constituents: 0.02% DTT, 0.32% Tris HCl, 10% Glycerol (glycerin, glycerine), 0.29% Sodium chloride

関連情報

機能

Calcium-dependent nucleotidase with a preference for UDP. The order of activity with different substrates is UDP > GDP > UTP > GTP. Has very low activity towards ADP and even lower activity towards ATP. Does not hydrolyze AMP and GMP.

組織特異性

Widely expressed.

関連疾患

Defects in CANT1 are the cause of Desbuquois dysplasia (DBQD) [MIM:251450]. A chondrodysplasia characterized by severe prenatal and postnatal growth retardation (less than -5 SD), joint laxity, short extremities, progressive scoliosis, round face, midface hypoplasia, prominent bulging eyes. The main radiologic features are short long bones with metaphyseal splay, a 'Swedish key' appearance of the proximal femur (exaggerated trochanter), and advance carpal and tarsal bone age. Two forms of Desbuquois dysplasia are distinguished on the basis of the presence (type 1) or absence (type 2) of characteristic hand anomalies: an extra ossification center distal to the second metacarpal, delta phalanx, bifid distal thumb phalanx, and phalangeal dislocations.

配列類似性

Belongs to the apyrase family.

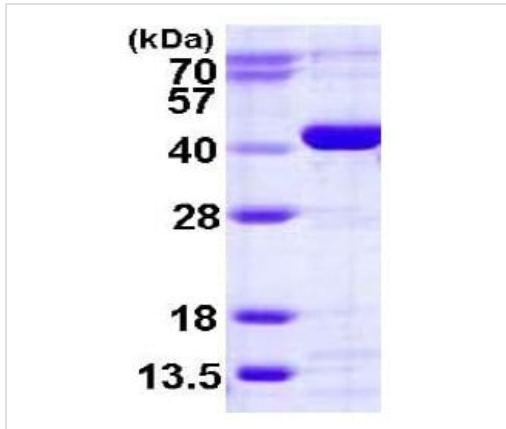
翻訳後修飾

N-glycosylated.

細胞内局在

Endoplasmic reticulum membrane. Golgi apparatus > Golgi stack membrane. Processed form: Secreted.

画像



15% SDS-PAGE showing ab123189 (3 μ g).

SDS-PAGE - Recombinant Human CANT1 protein
(ab123189)

Please note: All products are "FOR RESEARCH USE ONLY. NOT FOR USE IN DIAGNOSTIC PROCEDURES"

Our Abpromise to you: Quality guaranteed and expert technical support

- Replacement or refund for products not performing as stated on the datasheet
- Valid for 12 months from date of delivery
- Response to your inquiry within 24 hours
- We provide support in Chinese, English, French, German, Japanese and Spanish
- Extensive multi-media technical resources to help you
- We investigate all quality concerns to ensure our products perform to the highest standards

If the product does not perform as described on this datasheet, we will offer a refund or replacement. For full details of the Abpromise, please visit <https://www.abcam.co.jp/abpromise> or contact our technical team.

Terms and conditions

- Guarantee only valid for products bought direct from Abcam or one of our authorized distributors