

### Recombinant Human CALML3 protein ab139257

画像数 1

#### 製品の詳細

製品名	Recombinant Human CALML3 protein
精製度	> 90 % SDS-PAGE. ab139257 is purified using conventional chromatography techniques.
発現系	Escherichia coli
アクセッション番号	<b><u>P27482</u></b>
タンパク質長	Full length protein
Animal free	No
由来	Recombinant
生物種	Human
配列	MGSSHHHHHHSSGLVPRGSHMGSHMADQLTEEQVTEFKEAFS LFDKDG DG CITTRELGTVMRSLGQNPTEAELRDM MSEIDRDGNGTVDFPE FLGMMARK MKD TDN EEEI REAFRVFDKDGNGFVSAAELRHVMTRLGEKLS DEEVDEMI RAADTDGDGQVNYEEFVRVLVSK
予測される分子量	19 kDa including tags
領域	1 to 149
タグ	His tag N-Terminus

#### 特性

Our **Abpromise guarantee** covers the use of **ab139257** in the following tested applications.

The application notes include recommended starting dilutions; optimal dilutions/concentrations should be determined by the end user.

アプリケーション	SDS-PAGE
	Mass Spectrometry
質量分析	MALDI-TOF
製品の状態	Liquid

#### 前処理および保存

保存方法および安定性	Shipped at 4°C. Store at +4°C short term (1-2 weeks). Upon delivery aliquot. Store at -20°C or -
------------	--------------------------------------------------------------------------------------------------

80°C. Avoid freeze / thaw cycle.

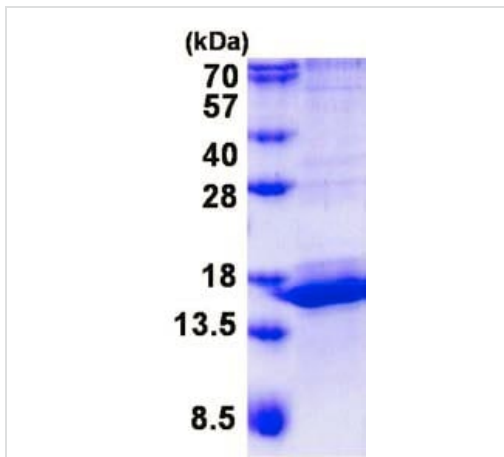
pH: 8.00

Constituents: 0.32% Tris HCl, 10% Glycerol (glycerin, glycerine), 0.88% Sodium chloride

## 関連情報

機能	May be similar to that of authentic calmodulin and may actually compete with calmodulin by binding, with different affinities, to cellular substrates.
組織特異性	Expressed in normal mammary, prostate, cervical, and epidermal tissues. It is greatly reduced or undetectable in transformed cells.
配列類似性	Belongs to the calmodulin family. Contains 4 EF-hand domains.

## 画像



15% SDS-PAGE analysis of 3 µg ab139257.

SDS-PAGE - Recombinant Human CALML3 protein  
(ab139257)

**Please note:** All products are "FOR RESEARCH USE ONLY. NOT FOR USE IN DIAGNOSTIC PROCEDURES"

## Our Abpromise to you: Quality guaranteed and expert technical support

- Replacement or refund for products not performing as stated on the datasheet
- Valid for 12 months from date of delivery
- Response to your inquiry within 24 hours
- We provide support in Chinese, English, French, German, Japanese and Spanish
- Extensive multi-media technical resources to help you
- We investigate all quality concerns to ensure our products perform to the highest standards

If the product does not perform as described on this datasheet, we will offer a refund or replacement. For full details of the Abpromise, please visit <https://www.abcam.co.jp/abpromise> or contact our technical team.

## Terms and conditions

---

- Guarantee only valid for products bought direct from Abcam or one of our authorized distributors