

Recombinant Human CALM1 Protein ab94519

画像数 2

製品の詳細

製品名	Recombinant Human CALM1 Protein
生理活性	The dilution curve of ab268375 was determined in a CAMK26δ activation assay using autocalmitide-2 as substrate.
精製度	> 95 % SDS-PAGE. Purity determined to be >95% by densitometry.
発現系	Escherichia coli
アクセッション番号	P0DP23
タンパク質長	Full length protein
Animal free	No
由来	Recombinant
生物種	Human
配列	MADQLTEEQI AEFKEAFSLF DKDGDGTITT KELGTVMRSL GQNPTAEALQ DMINEVDADG NGTIDFPEFL TMMARKMKDT DSEEEIREAF RVFDKDGNGY ISAAELRHVM TNLGEKLTDE EVDEMIREAD IDGDGQVNYE EFVQMMTAK
領域	1 to 149
タグ	His tag N-Terminus

特性

Our **Abpromise guarantee** covers the use of **ab94519** in the following tested applications.

The application notes include recommended starting dilutions; optimal dilutions/concentrations should be determined by the end user.

アプリケーション	Functional Studies
	SDS-PAGE
製品の状態	Liquid

前処理および保存

保存方法および安定性	Shipped on dry ice. Upon delivery aliquot and store at -80°C. Avoid freeze / thaw cycles. pH: 7.5
------------	--

Preservative: 1.02% Imidazole

Constituents: 0.002% PMSF, 0.82% Sodium phosphate, 0.004% (R*,R*)-1,4-Dimercaptobutan-2,3-diol, 25% Glycerol (glycerin, glycerine), 1.74% Sodium chloride

This product is an active protein and may elicit a biological response in vivo, handle with caution.

関連情報

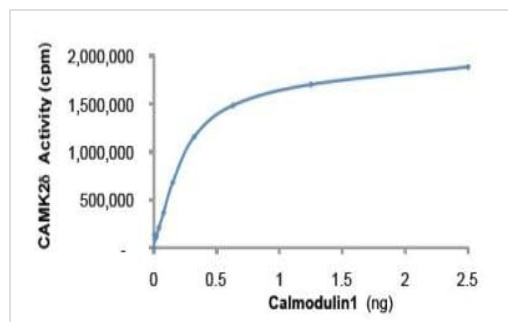
関連性

Function: Calmodulin mediates the control of a large number of enzymes and other proteins by $\text{Ca}(2+)$. Among the enzymes to be stimulated by the calmodulin- $\text{Ca}(2+)$ complex are a number of protein kinases and phosphatases. Together with CEP110 and centrin, is involved in a genetic pathway that regulates the centrosome cycle and progression through cytokinesis.

細胞内局在

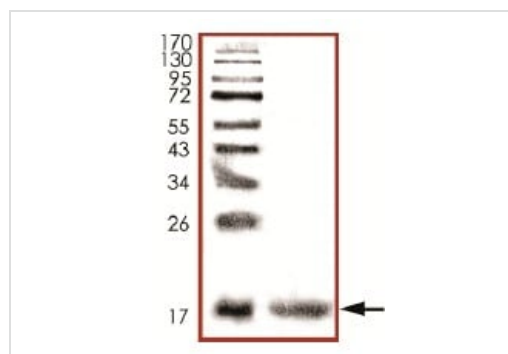
Cytoplasm > cytoskeleton > spindle. Cytoplasm > cytoskeleton > spindle pole. Distributed throughout the cell during interphase, but during mitosis becomes dramatically localized to the spindle poles and the spindle microtubules.

画像



Functional Studies - Recombinant Human
Calmodulin 1 Protein (ab94519)

ab94519 in a sample CAMK delta kinase activation assay. The assay was performed in 25 ng CAMK delta, 200 ng/μl autocamtide-2 peptide, 0.4mM CaCl_2 , 50 μM ATP and trace $[^{33}\text{P}]$ -gamma ATP in a 25 μl reaction volume for 15 minutes at 30°C.



SDS-PAGE - Recombinant Human Calmodulin 1
Protein (ab94519)

ab94519 analysed by SDS-PAGE.

Please note: All products are "FOR RESEARCH USE ONLY. NOT FOR USE IN DIAGNOSTIC PROCEDURES"

Our Abpromise to you: Quality guaranteed and expert technical support

- Replacement or refund for products not performing as stated on the datasheet
- Valid for 12 months from date of delivery
- Response to your inquiry within 24 hours
- We provide support in Chinese, English, French, German, Japanese and Spanish
- Extensive multi-media technical resources to help you
- We investigate all quality concerns to ensure our products perform to the highest standards

If the product does not perform as described on this datasheet, we will offer a refund or replacement. For full details of the Abpromise, please visit <https://www.abcam.co.jp/abpromise> or contact our technical team.

Terms and conditions

- Guarantee only valid for products bought direct from Abcam or one of our authorized distributors