

Recombinant Human Calcium binding protein P22 ab99141

画像数 1

製品の詳細

製品名	Recombinant Human Calcium binding protein P22
精製度	> 95 % SDS-PAGE. ab99141 was purified by using conventional chromatography.
発現系	Escherichia coli
アクセッション番号	<u>Q99653</u>
タンパク質長	Full length protein
Animal free	No
由来	Recombinant
生物種	Human
配列	<p>MGSSHHHHHHSSGLVPRGSHMMGSRASTLLRDEELEEIKK</p> <p>ETGFSHSQIT</p> <p>RLYSRFTSLDKGENTLSREDFQRIPELAINPLGDRIINAF</p> <p>PEGEDQVN</p> <p>FRGFMRTLAFRPIEDNEKSKDVNGPEPLNSRSNKLHFARL</p> <p>YDLKDDEK</p> <p>ISRDELLQVLRMMVGVNISDEQLGSIADRTIQEADQDGDSAI</p> <p>SFTEFVKV LEKVDVEQKMSIRFLH</p>
予測される分子量	25 kDa including tags
領域	1 to 195
タグ	His tag N-Terminus
製品の詳細	Recombinant Human Calcium binding protein P22

特性

Our **Abpromise guarantee** covers the use of **ab99141** in the following tested applications.

The application notes include recommended starting dilutions; optimal dilutions/concentrations should be determined by the end user.

アプリケーション	SDS-PAGE
	Mass Spectrometry
質量分析	MALDI-TOF
製品の状態	Liquid

前処理および保存

保存方法および安定性

Shipped at 4°C. Store at +4°C short term (1-2 weeks). Upon delivery aliquot. Store at -20°C or -80°C. Avoid freeze / thaw cycle.

pH: 7.50

Constituents: 0.316% Tris HCl, 10% Glycerol (glycerin, glycerine)

関連情報

機能

Required for constitutive membrane traffic. Inhibits GTPase-stimulated Na(+)/H(+) exchange. Also inhibits calcineurin phosphatase activity. Required for activity of SLC9A1/NHE1.

組織特異性

Ubiquitously expressed. Has been found in fetal eye, lung, liver, muscle, heart, kidney, thymus and spleen.

配列類似性

Contains 4 EF-hand domains.

翻訳後修飾

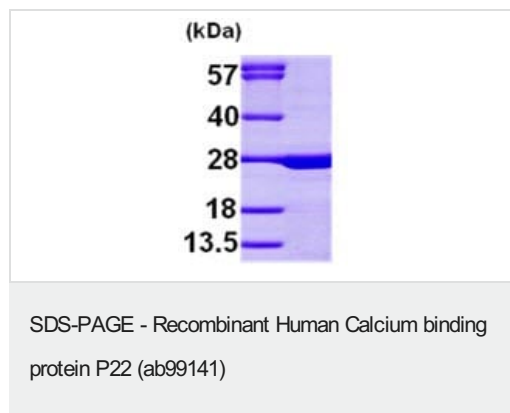
Both N-myristoylation and calcium-mediated conformational changes are essential for its function in exocytic traffic.

Phosphorylated; decreased phosphorylation is associated with an increase in exchange activity. The phosphorylation state may regulate the binding to NHE1.

細胞内局在

Cytoplasm.

画像



15% SDS-PAGE analysis of 3µg ab99141.

Please note: All products are "FOR RESEARCH USE ONLY. NOT FOR USE IN DIAGNOSTIC PROCEDURES"

Our Abpromise to you: Quality guaranteed and expert technical support

- Replacement or refund for products not performing as stated on the datasheet
- Valid for 12 months from date of delivery
- Response to your inquiry within 24 hours
- We provide support in Chinese, English, French, German, Japanese and Spanish
- Extensive multi-media technical resources to help you
- We investigate all quality concerns to ensure our products perform to the highest standards

If the product does not perform as described on this datasheet, we will offer a refund or replacement. For full details of the Abpromise, please visit <https://www.abcam.co.jp/abpromise> or contact our technical team.

Terms and conditions

- Guarantee only valid for products bought direct from Abcam or one of our authorized distributors