

Recombinant Human Calcineurin A protein ab101870

画像数 2

製品の詳細

製品名	Recombinant Human Calcineurin A protein
精製度	> 85 % SDS-PAGE. ab101870 was purified using conventional chromatography techniques.
発現系	Escherichia coli
アクセッション番号	<u>Q08209-2</u>
タンパク質長	Full length protein
Animal free	No
由来	Recombinant
生物種	Human
配列	MGSSHHHHHSSGLVPRGSHTGSMSEPKAIDPKLSTTDRV VKAVPFPPSH RLTAKEVFDNDGKPRVDILKAHLMKEGRLEESVALRIITEGA SILRQEK LLDIDAPVTVCGDIHGQFFDLMKLFEVGGSPANTRYLFLGDY VDRGYFSI ECVLYLWALKILYPKTLFLLRGNHECRHLTEYFTFKQECKIK YSERVYDA CMDAFDCLPLAALMNQQFLCVHGGLSPEINTLDDIRKLDLRFK EPPAYGPM CDILWSDPLEDFGNEKTQEHFTHNTVRGCSYFYSPAVCEFL QHNNLLSI LRAHEAQDAGYRMYRKSQTTGFPSLITIFSAPNYLDVYNNKA AVLKYENN VMNIRQFNCSPPHYWLPNFMVDVFTWSLPFVGEKVTEMLVNVL NICSDDEL GSEEDGFDGATAAARKEVIRNKIRAIGKMARVFSVLRRESES VLTLLKGLT PTGMLPSGVLSSGKQTLQSAIKGFSPQHKITSFEEAKGLDRI NERMPRR DAMPSDANLNSINKALTSETNGTDSNGSNSSNIQ
予測される分子量	60 kDa including tags
領域	1 to 511
タグ	His tag N-Terminus

特性

Our **Abpromise guarantee** covers the use of **ab101870** in the following tested applications.

The application notes include recommended starting dilutions; optimal dilutions/concentrations should be determined by the end user.

アプリケーション
Western blot
SDS-PAGE

製品の状態
Liquid

前処理および保存

保存方法および安定性
Shipped at 4°C. Store at +4°C short term (1-2 weeks). Upon delivery aliquot. Store at -20°C or -80°C. Avoid freeze / thaw cycle.
pH: 8.00
Constituents: 0.077% DTT, 0.316% Tris HCl, 0.0292% EDTA, 20% Glycerol (glycerin, glycerine), 1.16% Sodium chloride

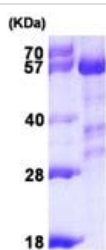
関連情報

機能
Calcium-dependent, calmodulin-stimulated protein phosphatase. This subunit may have a role in the calmodulin activation of calcineurin. Dephosphorylates DNMT1, HSPB1 and SSH1.

配列類似性
Belongs to the PPP phosphatase family. PP-2B subfamily.

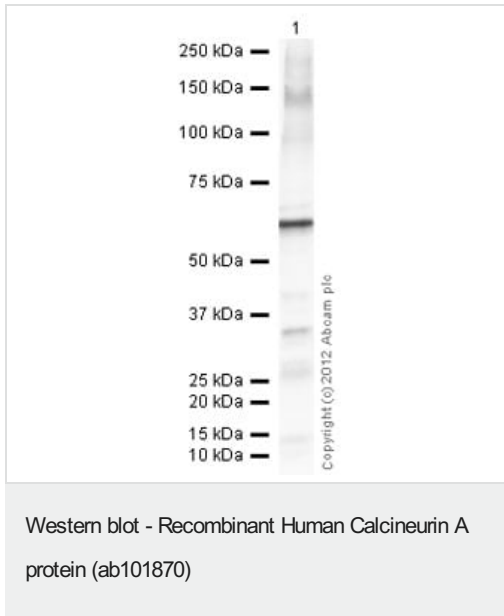
細胞内局在
Nucleus. Colocalizes with ACTN1 and MYOZ2 at the Z line in heart and skeletal muscle.

画像



15% SDS PAGE analysis of 3µg ab101870.

SDS-PAGE - Recombinant Human Calcineurin A protein (ab101870)



Anti-Calcineurin A antibody (**ab3673**) at 1/1000 dilution +
 Recombinant Human Calcineurin A protein (ab101870) at 0.1 µg

Secondary

Goat Anti-Rabbit IgG H&L (HRP) preadsorbed (**ab97080**) at
 1/5000 dilution

Developed using the ECL technique.

Performed under reducing conditions.

Exposure time: 10 seconds

Please note: All products are "FOR RESEARCH USE ONLY. NOT FOR USE IN DIAGNOSTIC PROCEDURES"

Our Abpromise to you: Quality guaranteed and expert technical support

- Replacement or refund for products not performing as stated on the datasheet
- Valid for 12 months from date of delivery
- Response to your inquiry within 24 hours
- We provide support in Chinese, English, French, German, Japanese and Spanish
- Extensive multi-media technical resources to help you
- We investigate all quality concerns to ensure our products perform to the highest standards

If the product does not perform as described on this datasheet, we will offer a refund or replacement. For full details of the Abpromise, please visit <https://www.abcam.co.jp/abpromise> or contact our technical team.

Terms and conditions

- Guarantee only valid for products bought direct from Abcam or one of our authorized distributors