

Recombinant Human Brachyury / Bry protein ab114235

画像数 1

製品の詳細

製品名	Recombinant Human Brachyury / Bry protein		
発現系	Wheat germ		
アクセッション番号	<u>O15178</u>		
タンパク質長	Full length protein		
Animal free	No		
由来	Recombinant		
生物種	Human		
配列	MSSPGTESAGKSLQYRVDHLLSAVENELQAGSEKGDPTEREL RVGLEESE LWLRFKELTNEMIVTKNGRRMFPVL KVNVSGLDPNAMYSFLLDFVAAD NHRWKYVNGEWPGGKPEPQAPSCVYIHPDSPNFGAHWMKAP VSFSKVKL TN KLNGGGQIMLSLHKYEPRIHIVRVGDPQRMITSHCFPETQF IAVT AYQNEEITALKIKYNPFKAFLDAKERSD HKEMMEEPGDSQQPGYSQS YSDNSPACLSMLQSHDNWSSLGMPAHPSMLPVSHNASPTSS SQYPSLWS VSNGAV TPGSQAAAVSNGLGAQFFRGSPAHYTPLTHPVSAOSSSGSPL YEGAAAATDIVDSQYDAAAQGRLIASWTPVSPP SM		
予測される分子量	68 kDa including tags		
領域	1 to 377		

特性

Our **Abpromise guarantee** covers the use of **ab114235** in the following tested applications.

The application notes include recommended starting dilutions; optimal dilutions/concentrations should be determined by the end user.

アプリケーション	ELISA
	SDS-PAGE
	Western blot
製品の状態	Liquid

備考

前処理および保存

保存方法および安定性

Shipped on dry ice. Upon delivery aliquot and store at -80°C. Avoid freeze / thaw cycles.

pH: 8.00

Constituents: 0.3% Glutathione, 0.79% Tris HCl

関連情報

機能

Involved in the transcriptional regulation of genes required for mesoderm formation and differentiation. Binds to a palindromic site (called T site) and activates gene transcription when bound to such a site.

関連疾患

Genetic variations in T are associated with susceptibility to neural tube defects (NTD) [MIM:182940]. NTD are common congenital malformations. Spina bifida, which results from malformations in the caudal region of the neural tube, is compatible with life but associated with significant morbidity, including lower limb paralysis.

T is involved in susceptibility to the development of chordoma (CHDM) [MIM:215400]. Chordomas are rare, clinically malignant tumors derived from notochordal remnants. They occur along the length of the spinal axis, predominantly in the sphenoccipital, vertebral and sacrococcygeal regions. They are characterized by slow growth, local destruction of bone, extension into adjacent soft tissues and rarely, distant metastatic spread. Note=Susceptibility to development of chordomas is due to a T gene duplication.

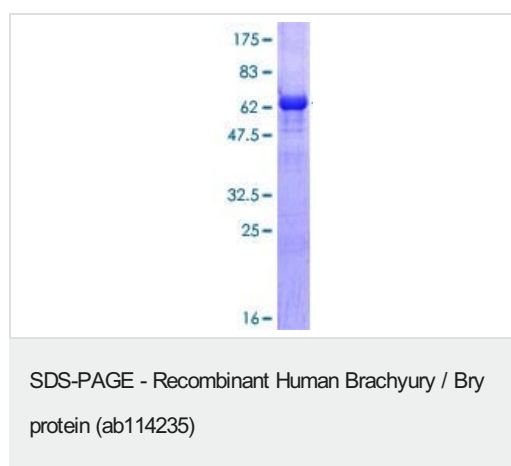
配列類似性

Contains 1 T-box DNA-binding domain.

細胞内局在

Nucleus.

画像



12.5% SDS-PAGE showing ab114235 at approximately 67.54kDa stained with Coomassie Blue.

Please note: All products are "FOR RESEARCH USE ONLY. NOT FOR USE IN DIAGNOSTIC PROCEDURES"

Our Abpromise to you: Quality guaranteed and expert technical support

- Replacement or refund for products not performing as stated on the datasheet
- Valid for 12 months from date of delivery
- Response to your inquiry within 24 hours

- We provide support in Chinese, English, French, German, Japanese and Spanish
- Extensive multi-media technical resources to help you
- We investigate all quality concerns to ensure our products perform to the highest standards

If the product does not perform as described on this datasheet, we will offer a refund or replacement. For full details of the Abpromise, please visit <https://www.abcam.co.jp/abpromise> or contact our technical team.

Terms and conditions

- Guarantee only valid for products bought direct from Abcam or one of our authorized distributors