

Recombinant Human BORIS protein ab112433

画像数 1

製品の詳細

製品名	Recombinant Human BORIS protein
発現系	Wheat germ
アクセッション番号	<u>Q8NI51</u>
タンパク質長	Protein fragment
Animal free	No
由来	Recombinant
生物種	Human
配列	AERTKEQLFFVETMSGDERSDEIVLTVSNSNVEEQEDQPTAG QADAEKAK STKNQRKTKGAKGTFHCDVCMFTSSRMSSFNRHMKTHTSEKP HLCHLCLK T
予測される分子量	37 kDa including tags
領域	193 to 293
タグ	GST tag N-Terminus

特性

Our **Abpromise guarantee** covers the use of **ab112433** in the following tested applications.

The application notes include recommended starting dilutions; optimal dilutions/concentrations should be determined by the end user.

アプリケーション	Western blot SDS-PAGE ELISA
製品の状態	Liquid

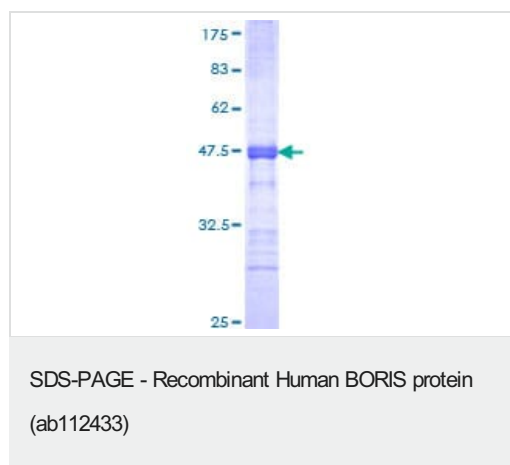
前処理および保存

保存方法および安定性	Shipped on dry ice. Upon delivery aliquot and store at -80°C. Avoid freeze / thaw cycles. pH: 8.00 Constituents: 0.31% Glutathione, 0.79% Tris HCl
------------	--

関連情報

機能	Testis-specific DNA binding protein responsible for insulator function, nuclear architecture and transcriptional control, which probably acts by recruiting epigenetic chromatin modifiers. Plays a key role in gene imprinting in male germline, by participating in the establishment of differential methylation at the IGF2/H19 imprinted control region (ICR). Directly binds the unmethylated H19 ICR and recruits the PRMT7 methyltransferase, leading to methylate histone H4 'Arg-3' to form H4R3sme2. This probably leads to recruit de novo DNA methyltransferases at these sites (By similarity). Seems to act as tumor suppressor. In association with DNMT1 and DNMT3B, involved in activation of BAG1 gene expression by binding to its promoter. Required for dimethylation of H3 lysine 4 (H3K4me2) of MYC and BRCA1 promoters.
組織特異性	Testis specific. Specifically expressed in primary spermatocytes.
配列類似性	Belongs to the CTCF zinc-finger protein family. Contains 11 C2H2-type zinc fingers.
発生段階	Is up-regulated in primary spermatocytes (expression overlapping with the genome-wide erasure of methylation) to become silenced on activation of CTCF in post-meiotic germline cells (expression corresponding to DNA remethylation).
細胞内局在	Cytoplasm. Nucleus.

画像



ab112433 analysed on a 12.5% SDS-PAGE gel stained with Coomassie Blue.

Please note: All products are "FOR RESEARCH USE ONLY. NOT FOR USE IN DIAGNOSTIC PROCEDURES"

Our Abpromise to you: Quality guaranteed and expert technical support

- Replacement or refund for products not performing as stated on the datasheet
- Valid for 12 months from date of delivery
- Response to your inquiry within 24 hours
- We provide support in Chinese, English, French, German, Japanese and Spanish
- Extensive multi-media technical resources to help you
- We investigate all quality concerns to ensure our products perform to the highest standards

If the product does not perform as described on this datasheet, we will offer a refund or replacement. For full details of the Abpromise,

please visit <https://www.abcam.co.jp/abpromise> or contact our technical team.

Terms and conditions

- Guarantee only valid for products bought direct from Abcam or one of our authorized distributors