

### Recombinant human BLK protein ab60876

画像数 5

#### 製品の詳細

製品名	Recombinant human BLK protein
精製度	> 90 % Densitometry. Affinity purified.
発現系	Baculovirus infected Sf9 cells
タンパク質長	Full length protein
Animal free	No
由来	Recombinant
生物種	Human

#### 特性

Our **Abpromise guarantee** covers the use of **ab60876** in the following tested applications.

The application notes include recommended starting dilutions; optimal dilutions/concentrations should be determined by the end user.

アプリケーション	SDS-PAGE Functional Studies
製品の状態	Liquid
備考	<b>ab204877</b> (Poly (4:1 Glu, Tyr) peptide) can be utilized as a substrate for assessing kinase activity

#### 前処理および保存

保存方法および安定性	Shipped on dry ice. Upon delivery aliquot and store at -80°C. Avoid freeze / thaw cycles. pH: 7.50 Constituents: 0.0038% EGTA, 0.00174% PMSF, 0.00385% DTT, 0.79% Tris HCl, 0.00292% EDTA, 25% Glycerol (glycerin, glycerine), 0.87% Sodium chloride This product is an active protein and may elicit a biological response in vivo, handle with caution.
------------	--

#### 関連情報

機能	Modulator of beta-cells function, acting through the up-regulation of PDX1 and NKX6-1 and consequent stimulation of insulin secretion in response to glucose.
----	---

## 組織特異性

Expressed in lymphatic organs, pancreatic islets, Leydig cells, striate ducts of salivary glands and hair follicles.

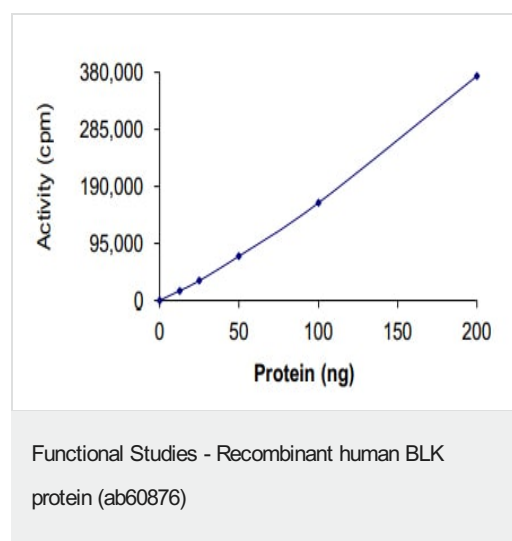
## 関連疾患

Defects in BLK are a cause of maturity-onset diabetes of the young type 11 (MODY11) [MIM:613375]. MODY11 is a form of diabetes that is characterized by an autosomal dominant mode of inheritance, onset in childhood or early adulthood (usually before 25 years of age), a primary defect in insulin secretion and frequent insulin-independence at the beginning of the disease.

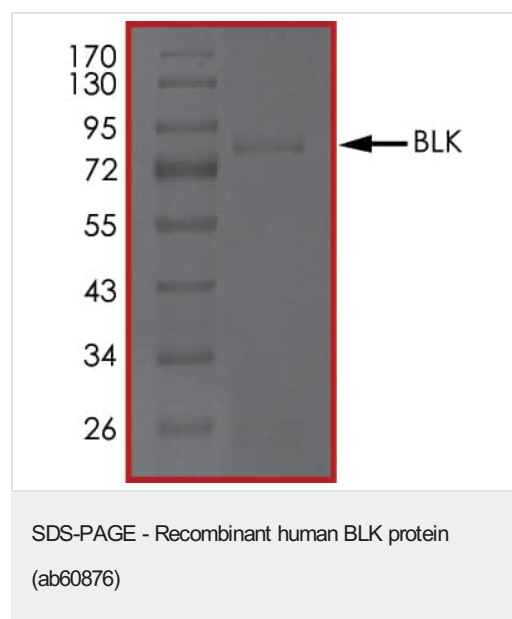
## 配列類似性

Belongs to the protein kinase superfamily. Tyr protein kinase family. SRC subfamily.  
Contains 1 protein kinase domain.  
Contains 1 SH2 domain.  
Contains 1 SH3 domain.

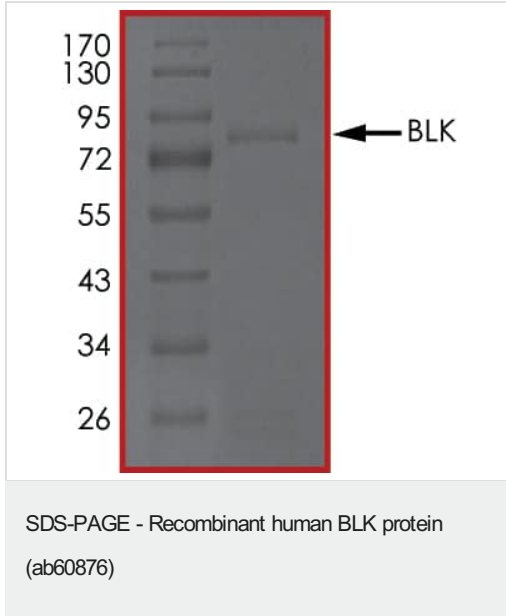
## 画像



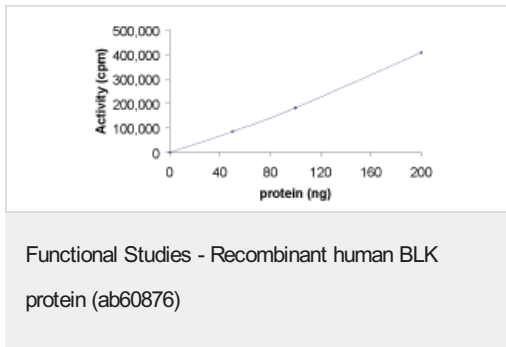
The specific activity of BLK (ab60876) was determined to be 110 nmol/min/mg as per activity assay protocol



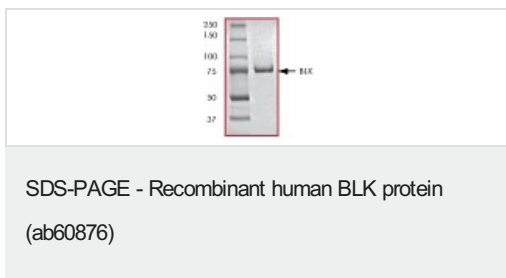
SDS PAGE analysis of ab60876



SDS PAGE analysis of ab60876



Sample Kinase Activity Plot.



ab60876 on SDS-PAGE, MW ~84 kDa.

**Please note:** All products are "FOR RESEARCH USE ONLY. NOT FOR USE IN DIAGNOSTIC PROCEDURES"

### Our Abpromise to you: Quality guaranteed and expert technical support

- Replacement or refund for products not performing as stated on the datasheet
- Valid for 12 months from date of delivery
- Response to your inquiry within 24 hours
- We provide support in Chinese, English, French, German, Japanese and Spanish
- Extensive multi-media technical resources to help you
- We investigate all quality concerns to ensure our products perform to the highest standards

If the product does not perform as described on this datasheet, we will offer a refund or replacement. For full details of the Abpromise, please visit <https://www.abcam.co.jp/abpromise> or contact our technical team.

#### **Terms and conditions**

---

- Guarantee only valid for products bought direct from Abcam or one of our authorized distributors